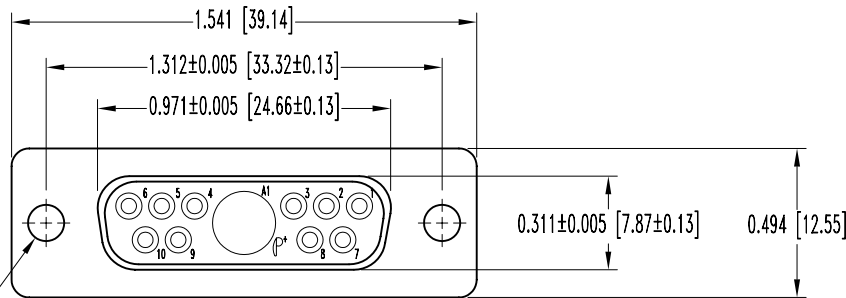
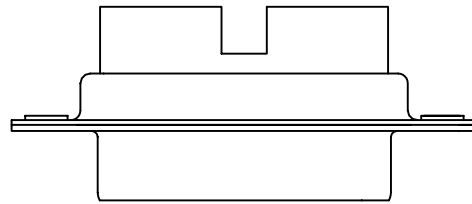


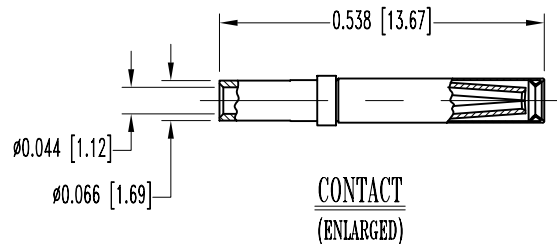
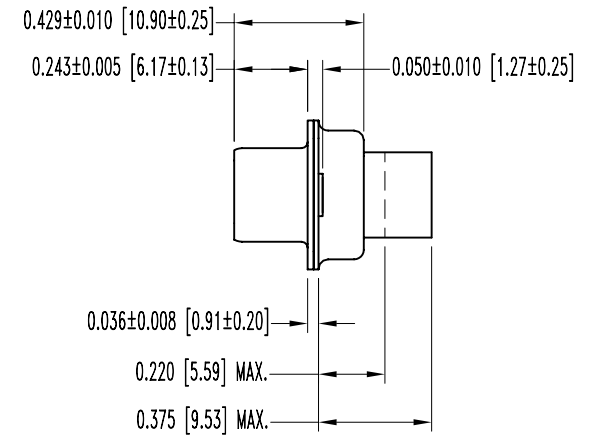
SK2150

POSITRONIC INDUSTRIES BELIEVES THE DATA ON THIS DRAWING TO BE RELIABLE. SINCE THE TECHNICAL INFORMATION IS GIVEN FREE OF CHARGE, THE USER EMPLOYS SUCH INFORMATION AT HIS OWN DISCRETION AND RISK. POSITRONIC INDUSTRIES ASSUMES NO RESPONSIBILITY FOR RESULTS OBTAINED OR DAMAGES INCURRED FROM USE OF SUCH INFORMATION IN WHOLE OR IN PART.

DATE	REV	REVISION RECORD	APP	DR	CK
5-18-01	A	ECO 17765		JLG	



2X  $\phi 0.120 \pm 0.005$  [ $\phi 3.05 \pm 0.13$ ]  
MOUNTING HOLE



NOTES:

- MATERIALS AND FINISHES:  
INSULATOR: GLASS FILLED POLYESTER PER MIL-M-24519 UL94V-0, BLUE COLOR.  
CONTACTS: LEADED NICKEL COPPER, GOLD FLASH OVER NICKEL.  
SHELLS: STEEL, ZINC PLATE WITH DICHROMATE SEAL.
- ELECTRICAL CHARACTERISTICS:  
CONTACT CURRENT RATING: 7.5 AMPERES NOMINAL.  
INITIAL CONTACT RESISTANCE: 0.005 OHMS MAXIMUM.  
INSULATOR RESISTANCE: 5 G OHMS.  
WORKING VOLTAGE: 300 V r.m.s.
- TEMPERATURE RANGE: -55°C TO +125°C.
- DIMENSIONS ARE IN INCHES [MILLIMETERS].

 <b>POSITRONIC INDUSTRIES INC.</b> <a href="http://www.connectpositronic.com">www.connectpositronic.com</a>		SCALE		DRAWN BY	
		N.T.S.		J. GREEN	
DECIMAL TOL.		CBC SERIES		APPROVED BY	
± 0.015 [0.38]		TITLE			
WF # 3677		CBC11W1F10000			
ANGULAR TOL.		DATE	DRAWING NUMBER	REV.	
± 5°		5-18-01	SK2150	A	