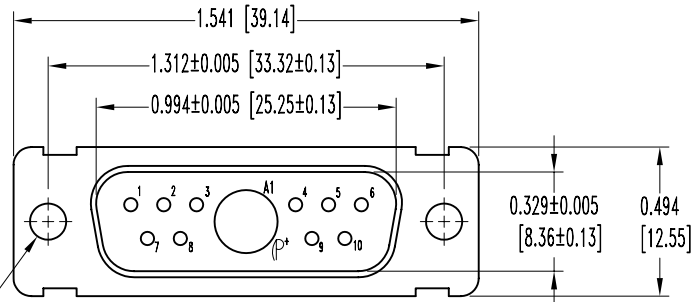


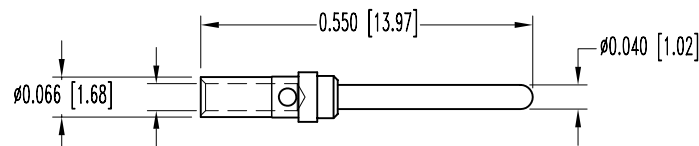
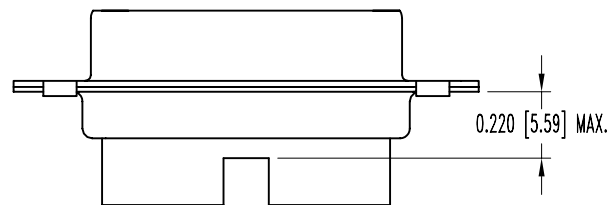
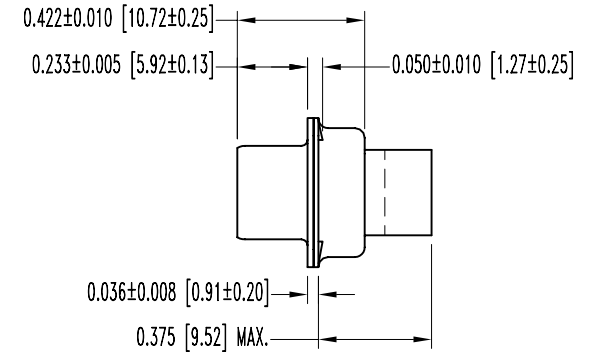
SK6633

POSITRONIC INDUSTRIES BELIEVES THE DATA ON THIS DRAWING TO BE RELIABLE. SINCE THE TECHNICAL INFORMATION IS GIVEN FREE OF CHARGE, THE USER EMPLOYS SUCH INFORMATION AT HIS OWN DISCRETION AND RISK. POSITRONIC INDUSTRIES ASSUMES NO RESPONSIBILITY FOR RESULTS OBTAINED OR DAMAGES INCURRED FROM USE OF SUCH INFORMATION IN WHOLE OR IN PART.

DATE	REV	REVISION RECORD	APP	DR	CK
10-6-05	NC	ECO 24800		ME	



2X Ø0.120±0.005 [Ø3.05±0.13]  
MOUNTING HOLE



CONTACT  
(ENLARGED)

NOTES:

- MATERIALS AND FINISHES:  
INSULATOR: GLASS FILLED POLYESTER PER MIL-M-24519 UL94V-0, BLUE COLOR.  
CONTACTS: BRASS, GOLD FLASH OVER NICKEL.  
SHELLS: STAINLESS STEEL, PASSIVATED.
- ELECTRICAL CHARACTERISTICS:  
CONTACT CURRENT RATING: 7.5 AMPERES NOMINAL.  
INITIAL CONTACT RESISTANCE: 0.008 OHMS MAXIMUM.  
INSULATOR RESISTANCE: 5 G OHMS.  
WORKING VOLTAGE: 300 V r.m.s.
- TEMPERATURE RANGE: -55°C TO +125°C.
- DIMENSIONS ARE IN INCHES [MILLIMETERS].

 <b>POSITRONIC INDUSTRIES INC.</b> www.connectpositronic.com		SCALE		DRAWN BY	
DECIMAL TOL. $\pm 0.015$ [0.38]		CBC SERIES		N.T.S.	
ANGULAR TOL. $\pm 5^\circ$		TITLE		APPROVED BY	
DATE		DRAWING NUMBER		REV.	
10-6-05		SK6633		M. ENEA	
		CBC11W1M1000S		NC	