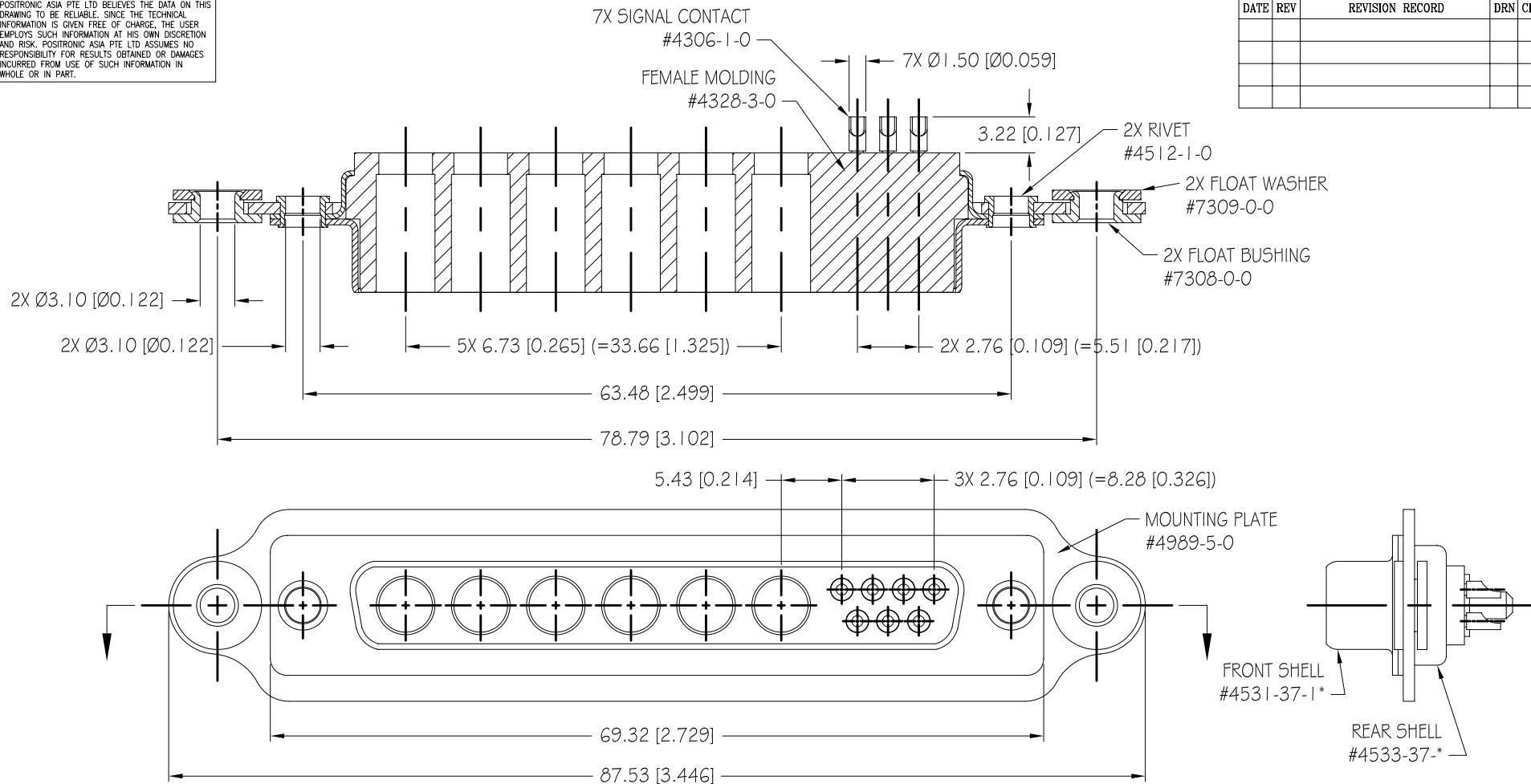


POSITRONIC ASIA PTE LTD BELIEVES THE DATA ON THIS DRAWING TO BE RELIABLE. SINCE THE TECHNICAL INFORMATION IS GIVEN FREE OF CHARGE, THE USER EMPLOYS SUCH INFORMATION AT HIS OWN DISCRETION AND RISK. POSITRONIC ASIA PTE LTD ASSUMES NO RESPONSIBILITY FOR RESULTS OBTAINED OR DAMAGES INCURRED FROM USE OF SUCH INFORMATION IN WHOLE OR IN PART.

DATE	REV	REVISION RECORD	DRN	CKD	APP



**NOTES :**

**1. MATERIALS AND FINISHES :**

INSULATOR : GLASS FILLED POLYESTER PER MIL-M-24519 UL94V-0, BLUE COLOR.  
 SIGNAL CONTACTS : BRASS, GOLD OVER NICKEL PLATE.  
 POWER CONTACTS : COPPER ALLOY, GOLD OVER NICKEL PLATE.  
 SHELLS : STEEL, ZINC PLATE WITH DICHROMATE SEAL.  
 MOUNTING PLATE : AL 5052-H32, IRIDITE PER PFS-31.

**2. ELECTRICAL CHARACTERISTICS :**

CONTACT CURRENT RATING : SIGNAL=7.5 AMPERES NOMINAL. POWER=30 AMPERES NOMINAL.  
 INITIAL CONTACT RESISTANCE : SIGNAL=0.008 OHMS MAX. POWER=0.005 OHMS MAX.  
 INSULATOR RESISTANCE : 5 G OHMS.  
 WORKING VOLTAGE : 300 V r.m.s.

**3. TEMPERATURE RANGE : -55°C TO +125°C.**

4. M05 759.1 ALLOWS FOR CONNECTOR TO BE SUPPLIED WITH BLIND MATING GUIDES.  
 5. SEE DRAWING NO. ASK20015 FOR PANEL CUT-OUT DIMENSIONS.

PROPRIETARY INFORMATION 	<b>POSITRONIC ASIA PTE. LTD.</b> 3014A UBI ROAD 1, #06-07. SINGAPORE 408703. Tel:(65)842-1419/Fax:(65)842-1421/email:posiasia@singnet.com.sg/web:www.positronic.com	
	SERIES <b>CBD</b>	SCALE <b>2:1</b>
GENERAL TOLERANCE LINEAR = ±0.38 [0.015] ANGULAR = ±5° ROUGHNESS = -- μm [-- μ"] Ra	PART NUMBER <b>CBD13W6F20000-759.1</b>	
UNLESS OTHERWISE SPECIFIED ALL DIMENSIONS ARE IN MILLIMETERS [INCHES] REMOVE ALL SHARP EDGES GD&T AS PER ASME Y14.5M-1994 AND ISO 1101 IF IN DOUBT, PLEASE ASK!	DATE <b>02-22-01</b>	DRAWING NUMBER <b>ASK20014</b>
		REV. <b>NC</b>