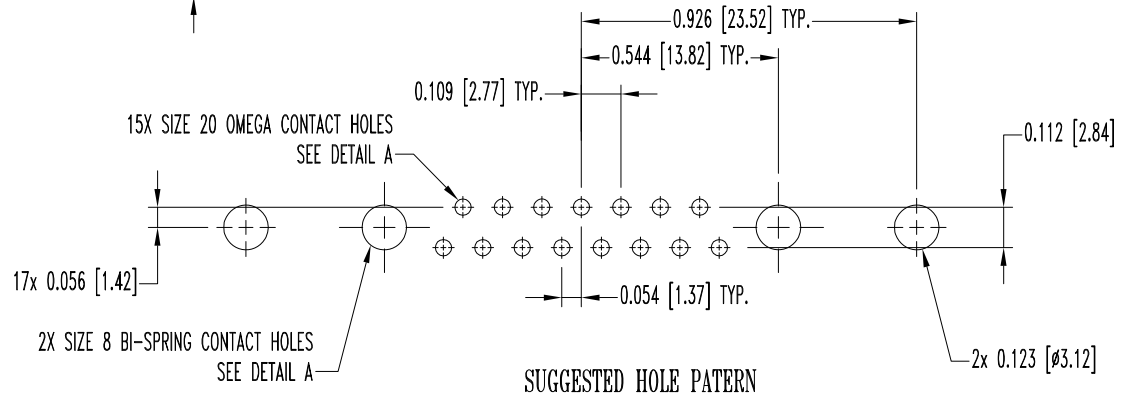
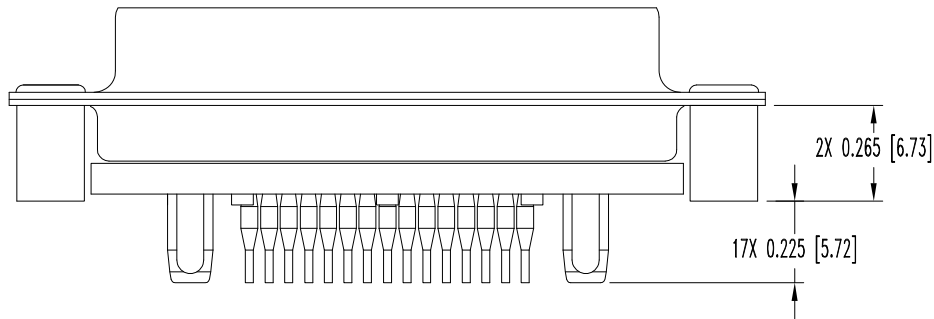
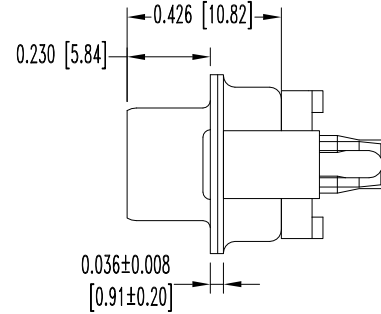
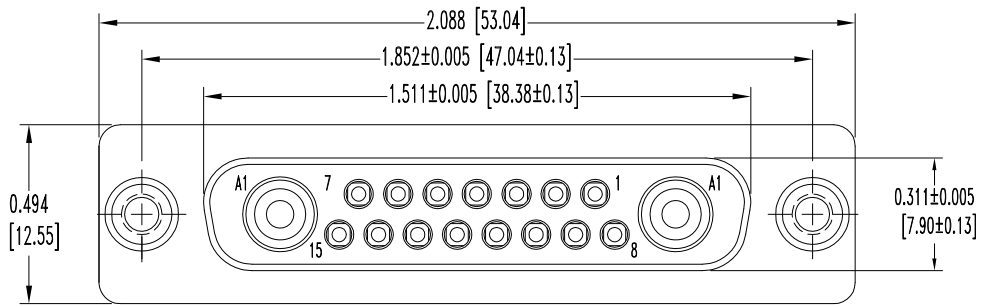
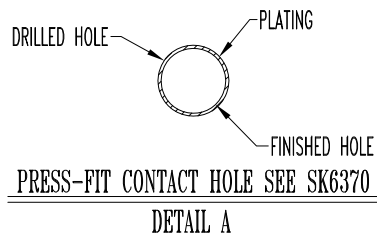



THIS DRAWING CONTAINS INFORMATION PROPRIETARY TO POSITRONIC AND ITS SUBSIDIARIES. POSITRONIC BELIEVES THE DATA ON THIS DRAWING TO BE RELIABLE. SINCE THE TECHNICAL INFORMATION IS GIVEN FREE OF CHARGE, THE USER EMPLOYS SUCH INFORMATION AT HIS OWN DISCRETION AND RISK. POSITRONIC ASSUMES NO RESPONSIBILITY FOR RESULTS OBTAINED OR DAMAGES INCURRED FROM USE OF SUCH INFORMATION IN WHOLE OR IN PART.

DATE	REV	REVISION RECORD	APP	DR	CK
4-24-01	NC	ECO 17640	RCW	YK	TK
10-4-05	A	ECO 24777	TK	LO	TK
2-26-10	B	ECO 32163	COLE	ME	COLE



- NOTES:
- MATERIALS AND FINISHES:
 INSULATORS - GLASS FILLED POLYESTER PER ASTM D5927, UL 94V-0, BLUE COLOR.
 SIGNAL CONTACTS - COPPER ALLOY WITH GOLD FLASH OVER NICKEL.
 POWER CONTACTS - COPPER ALLOY WITH GOLD FLASH OVER NICKEL.
 SHELLS - STEEL WITH ZINC PLATE AND DICHROMATE SEAL.
 SPACER - STEEL WITH ZINC PLATE AND DICHROMATE SEAL.
 - DETAILED PRODUCT, ELECTRICAL, AND MECHANICAL INFORMATION IS AVAILABLE IN THE LATEST CBD PRODUCT PUBLICATION. VISIT CONNECTPOSITRONIC.COM/PRODUCTS/1/STANDARD DENSITY COMBO -D/ OR CONNECTPOSITRONIC.COM
 - DIMENSIONS ARE IN INCHES [MILLIMETERS].



 POSITRONIC INDUSTRIES INC. www.connectpositronic.com		FSCM 28198	
CBD SERIES		SCALE N.T.S.	DRAWN BY Y. KELLEYBREW
± 0.015 [0.38]		APPROVED BY R. WILLIAMS	
TITLE CBD17W2F93S000			
DATE 4-24-01		DRAWING NUMBER SK3729	
ANGULAR TOL. ± 5°		REV. B	