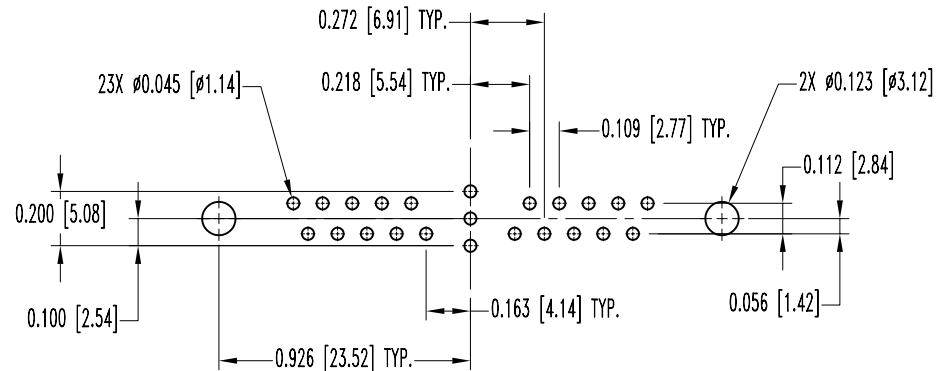
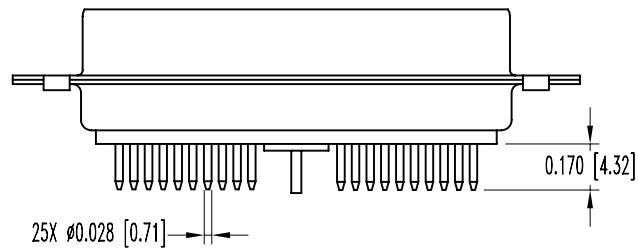
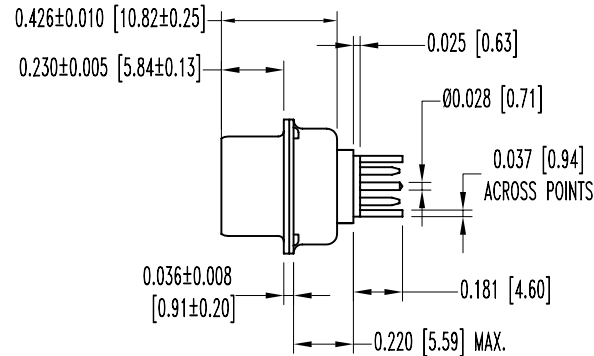
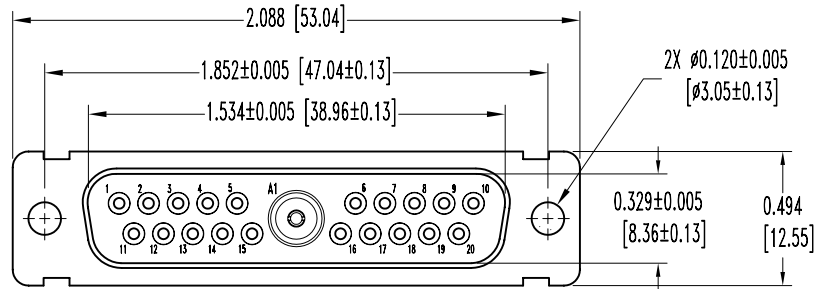


SK5784

POSITRONIC INDUSTRIES BELIEVES THE DATA ON THIS DRAWING TO BE RELIABLE. SINCE THE TECHNICAL INFORMATION IS GIVEN FREE OF CHARGE, THE USER EMPLOYS SUCH INFORMATION AT HIS OWN DISCRETION AND RISK. POSITRONIC INDUSTRIES ASSUMES NO RESPONSIBILITY FOR RESULTS OBTAINED OR DAMAGES INCURRED FROM USE OF SUCH INFORMATION IN WHOLE OR IN PART.

DATE	REV	REVISION RECORD	APP	DR	CK
11-2-04	NC	ECO 23207	RCW	YK	COLE
11-24-04	A	ECO 23326		ME	



CONTACT HOLE PATTERN

NOTES:

1. MATERIALS AND FINISHES:

INSULATOR: GLASS FILLED POLYESTER PER MIL-M-24519, UL 94V-0, COLOR BLUE.

SHELLS: STAINLESS STEEL, PASSIVATED.

SIGNAL CONTACTS: PRECISION MACHINED BRASS ALLOY, GOLD FLASH OVER NICKEL PLATE.

SHIELDED CONTACTS: COPPER ALLOY WITH PTFE TEFLON INSULATOR.

PLATING: SIGNAL CONTACT: 0.0000030 [0.75µ] GOLD OVER NICKEL.

CONTACT BODY: GOLD FLASH OVER NICKEL.

2. ELECTRICAL CHARACTERISTICS:

INITIAL CONTACT RESISTANCE: 0.008 OHMS MAXIMUM.

NOMINAL IMPEDANCE: 50 OHMS.

INSERTION LOSS: -0.46 dB AT 1 GHz

-1.5 dB AT 2 GHz.

VSWR: 1.15 AVERAGE AT 1 GHz


1.56 AVERAGE AT 2 GHz

INSULATOR RESISTANCE: 5 G OHMS.

WORKING VOLTAGE: 300 V r.m.s.

3. TEMPERATURE RANGE: -55°C TO +125°C.

4. DIMENSIONS ARE IN INCHES [MILLIMETERS].

 <p><b>POSITRONIC INDUSTRIES INC.</b> www.connectpositronic.com</p>		SCALE	
		N.T.S.	
DECIMAL TOL.		CBD SERIES	DRAWN BY
± 0.015 [0.38]			APPROVED BY
ANGULAR TOL.		TITLE	
± 5°		CBD21W1M65000S	
DATE	DRAWING NUMBER	REV.	
11-2-04	SK5784	A	