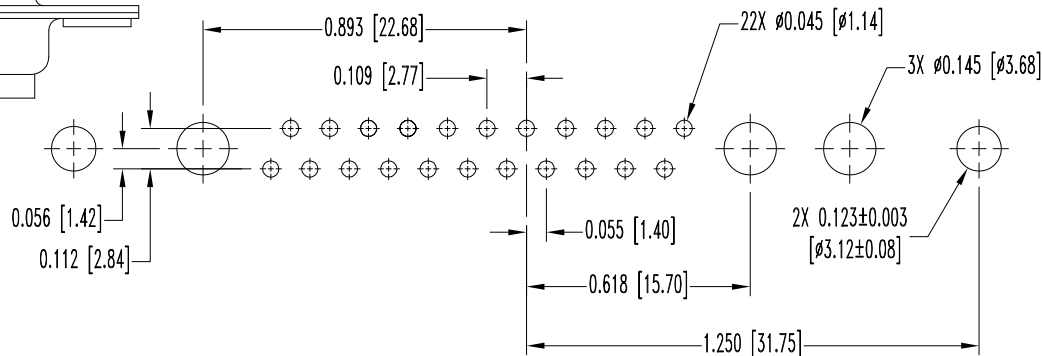
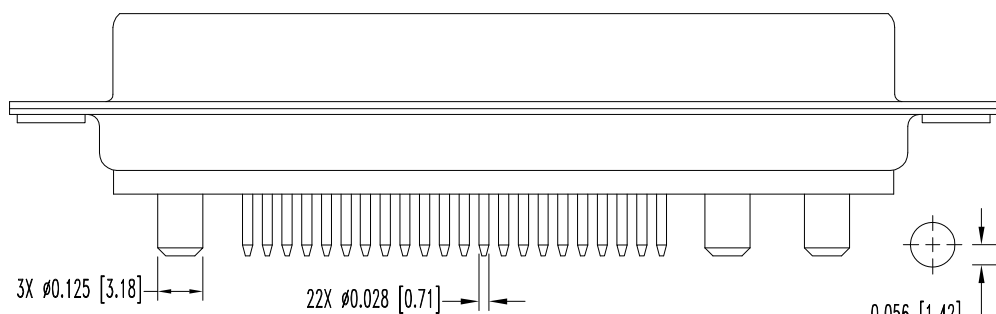
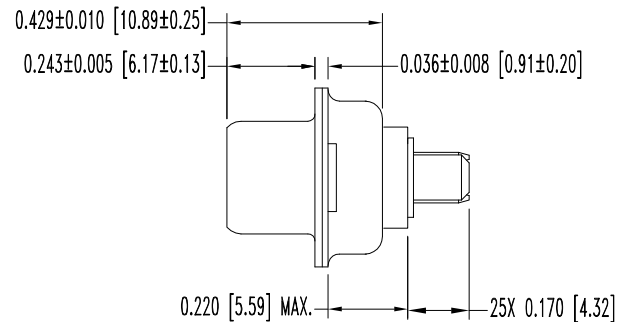
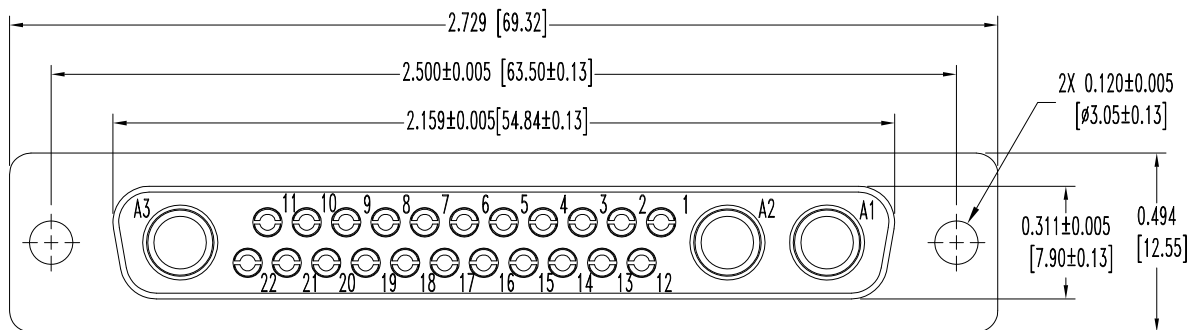


SK4996

THIS DRAWING CONTAINS INFORMATION PROPRIETARY TO POSITRONIC IND. INC. ANY REPRODUCTION, DISCLOSURE OR USE OF THIS DRAWING IS EXPRESSLY PROHIBITED, EXCEPT AS POSITRONIC IND. INC. MAY OTHERWISE AGREE IN WRITING.


DATE	REV	REVISION RECORD	APP	DR	CK
4-22-03	NC	ECO 20845	TK	YK	TK
3-3-10	A	ECO 32188	TK	ME	TK



CONTACT HOLE PATTERN

NOTES:

- MATERIALS AND FINISHES:  
 INSULATOR: GLASS FILLED POLYESTER PER ASTM D5927, UL 94V-0, BLUE COLOR.  
 SIGNAL CONTACTS: PHOSPHOR BRONZE, GOLD FLASH OVER NICKEL PLATE.  
 POWER CONTACTS: COPPER ALLOY, GOLD FLASH OVER NICKEL PLATE.  
 SHELLS: STEEL, TIN PLATE.
- DETAILED PRODUCT, ELECTRICAL, AND MECHANICAL INFORMATION IS AVAILABLE IN THE LATEST CBD PRODUCT PUBLICATION. VISIT [CONNECTPOSITRONIC.COM/PRODUCTS/1/STANDARD DENSITY COMBO](http://CONNECTPOSITRONIC.COM/PRODUCTS/1/STANDARD DENSITY COMBO) -D/ OR [CONNECTPOSITRONIC.COM](http://CONNECTPOSITRONIC.COM)
- DIMENSIONS ARE IN INCHES [MILLIMETERS].

 <b>POSITRONIC INDUSTRIES INC.</b> SPRINGFIELD, MISSOURI 65801		SCALE	DRAWN BY
CBD SERIES		N.T.S.	Y.KELLEYBREW
DECIMAL TOL. ±0.015 [0.38]		APPROVED BY TK	
TITLE <b>CBD25W3F37000X</b>			
DATE 4-22-03		DRAWING NUMBER SK4996	
ANGULAR TOL. ± N/A		REV. A	