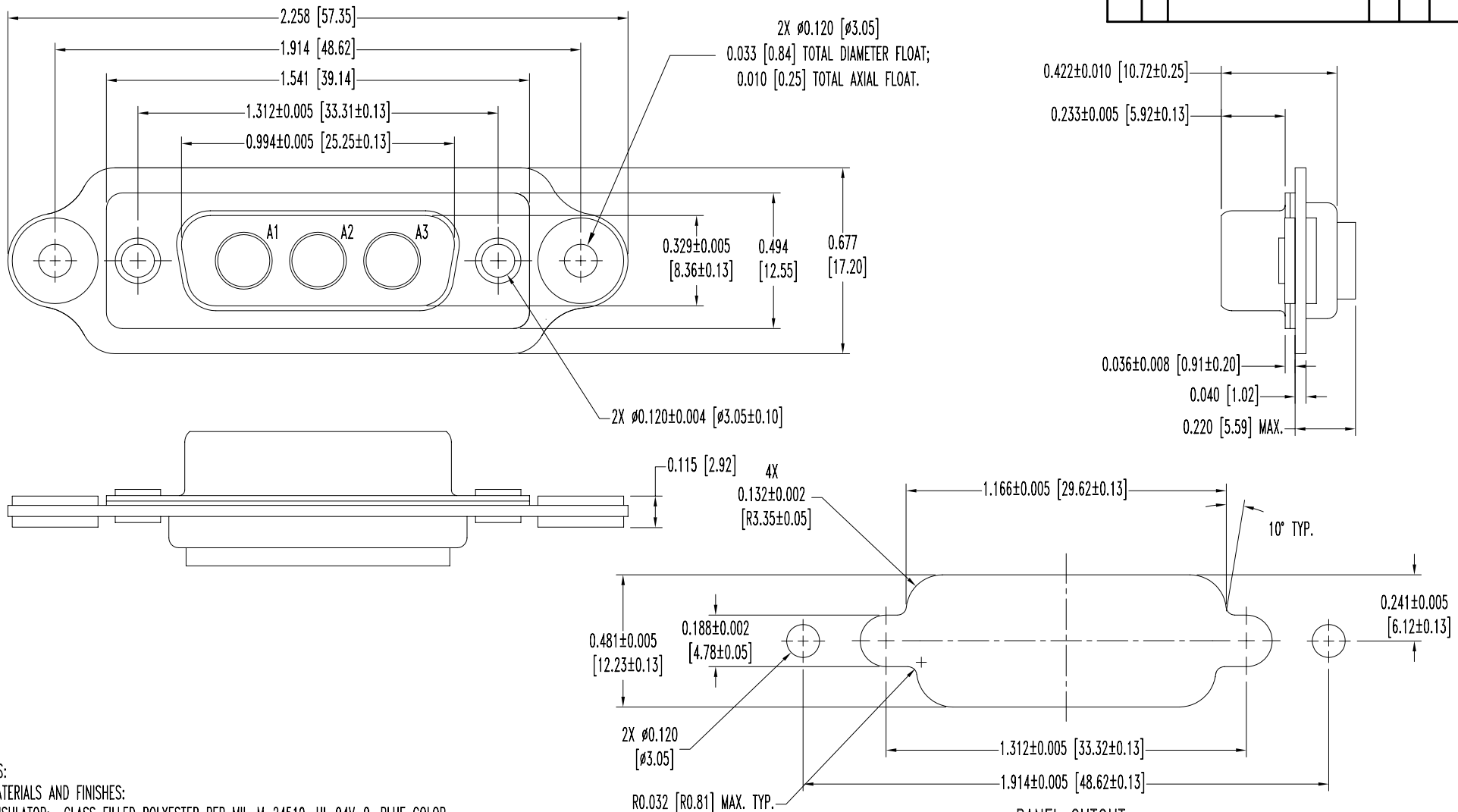


SK8710

POSITRONIC INDUSTRIES BELIEVES THE DATA ON THIS DRAWING TO BE RELIABLE, SINCE THE TECHNICAL INFORMATION IS GIVEN FREE OF CHARGE, THE USER EMPLOYS SUCH INFORMATION AT HIS OWN DISCRETION AND RISK. POSITRONIC INDUSTRIES ASSUMES NO RESPONSIBILITY FOR RESULTS OBTAINED OR DAMAGES INCURRED FROM USE OF SUCH INFORMATION IN WHOLE OR IN PART.

DATE	REV	REVISION RECORD	APP	DR	CK
7-2-07	NC	ECO 28118		YK	



NOTES:

- MATERIALS AND FINISHES:
INSULATOR: GLASS FILLED POLYESTER PER MIL-M-24519, UL 94V-0, BLUE COLOR.
SHELLS: STEEL, ZINC PLATE WITH CHROMATE SEAL.
MOUNTING PLATE: ALUMINUM, YELLOW ANODIZED.
FLOAT BUSHINGS: BRASS, ZINC PLATE CHROMATE SEAL.
FLOAT WASHERS: BRASS, ZINC PLATE CHROMATE SEAL.
- ELECTRICAL CHARACTERISTICS:
INSULATOR RESISTANCE: 5 G OHMS.
WORKING VOLTAGE: 300 V r.m.s.
- TEMPERATURE RANGE: -55°C TO +125°C.
- THIS MOS ALLOWS FOR MOUNTING PLATE TO BE INSTALLED.
- CONNECTORS ARE ROHS COMPLIANT PER ROHS DIRECTIVE 2002/95/EC OF 27 JAN 2003.
- DIMENSIONS ARE IN INCHES [MILLIMETERS].

PANEL CUTOUT

	POSITRONIC INDUSTRIES INC. www.connectpositronic.com		FSCM 28198
		CBD SERIES	SCALE N.T.S.
DECIMAL TOL. ± 0.015 [0.38]	TITLE CBD3W3M0000/AA-759.1		
ANGULAR TOL. ± 5°	DATE 7-2-07	DRAWING NUMBER SK8710	REV. NC