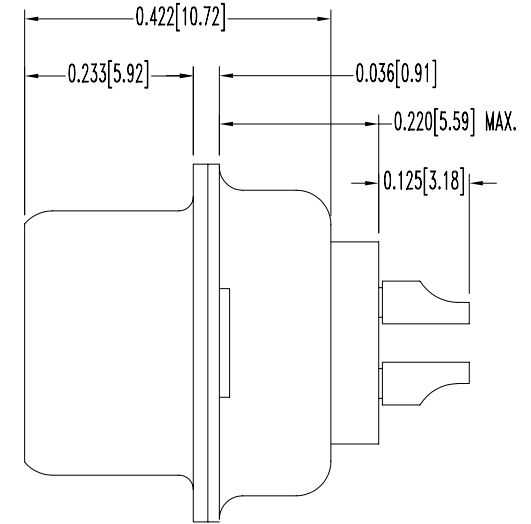
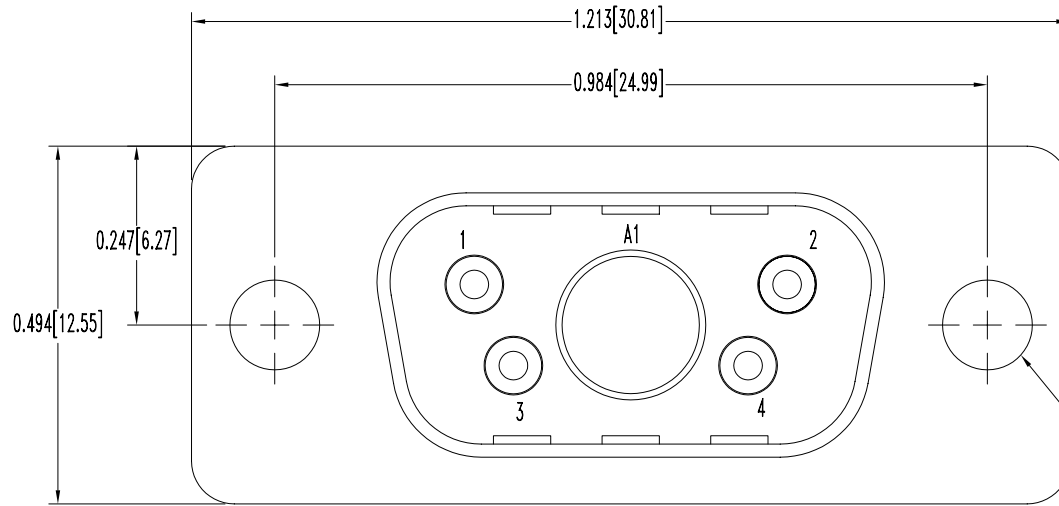


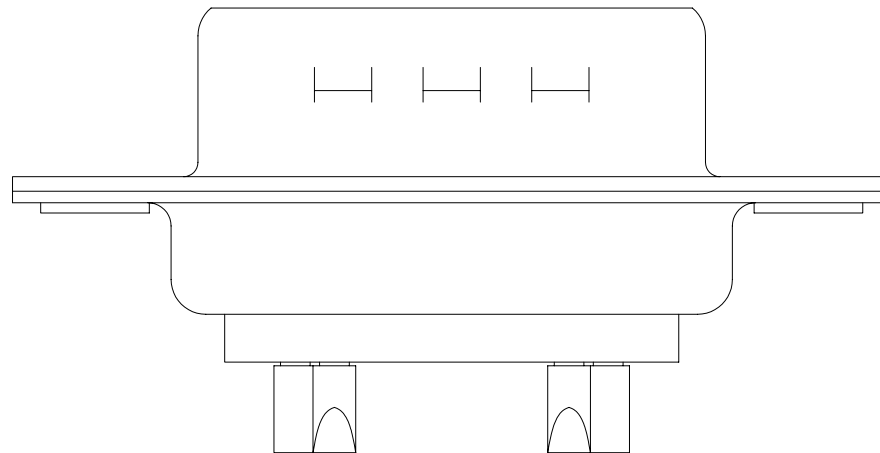
SK2873

POSITRONIC INDUSTRIES BELIEVES THE DATA ON THIS DRAWING TO BE RELIABLE. SINCE THE TECHNICAL INFORMATION IS GIVEN FREE OF CHARGE, THE USER EMPLOYS SUCH INFORMATION AT HIS OWN DISCRETION AND RISK. POSITRONIC INDUSTRIES ASSUMES NO RESPONSIBILITY FOR RESULTS OBTAINED OR DAMAGES INCURRED FROM USE OF SUCH INFORMATION IN WHOLE OR IN PART.

DATE	REV	REVISION RECORD	APP	DR	CK
6-19-97	NC	ECO 11998		LP	



2X  $\varnothing 0.120 \pm 0.005$   
[3.05 ± 0.13]



NOTES:

- MATERIALS AND FINISHES:  
INSULATOR: GLASS FILLED POLYESTER, PER MIL-M-24519, UL94V-0, BLUE COLOR.  
SIGNAL CONTACTS: BRASS ALLOY, GOLD FLASH OVER NICKEL PLATE.  
SHELLS: STEEL, TIN PLATED AND DIMPLED.
- ELECTRICAL CHARACTERISTICS:  
CONTACT CURRENT RATING: 7.5 AMPERES, NOMINAL.  
INITIAL CONTACT RESISTANCE: 0.008 OHMS MAXIMUM.  
INSULATOR RESISTANCE: 5 G OHMS.
- TEMPERATURE RANGE: -55°C TO +125°C.
- DIMENSIONS ARE IN INCHES [MILLIMETERS].

 <b>POSITRONIC INDUSTRIES INC.</b> SPRINGFIELD, MISSOURI 65801		SCALE <b>N.T.S.</b>		DRAWN BY <b>L. POLODNA</b>	
DECIMAL TOL. $\pm 0.015$ [0.38]		<b>CBD SERIES</b>		APPROVED BY	
<b>WF 4132</b>		TITLE <b>CBD5W1M2000Z</b>			
ANGULAR TOL. $\pm 5^\circ$		DATE <b>6-19-97</b>		DRAWING NUMBER <b>SK2873</b>	
					REV. <b>NC</b>