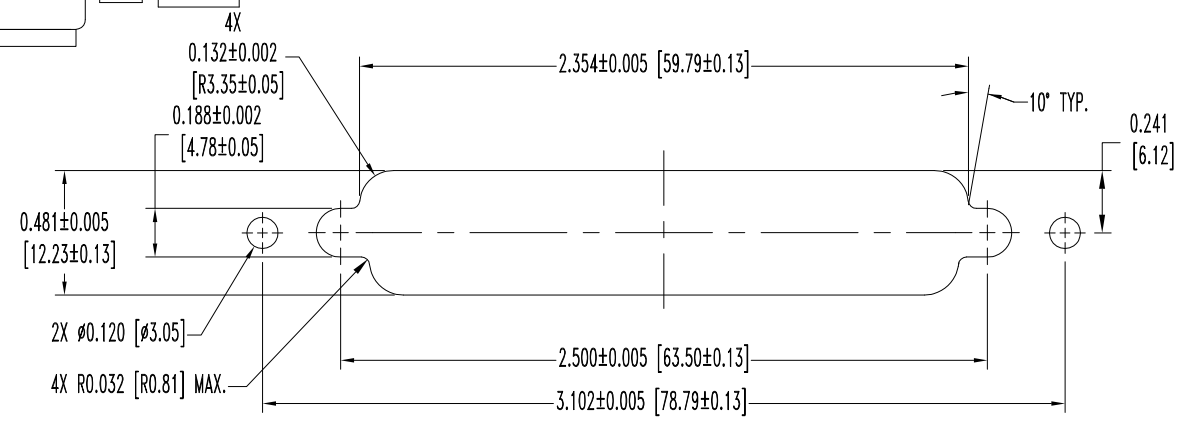
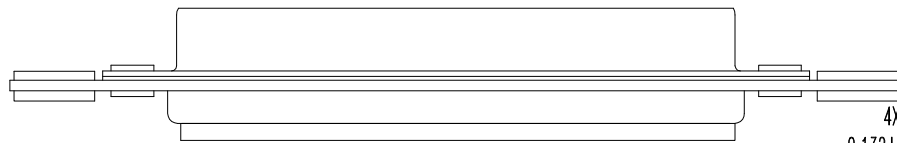
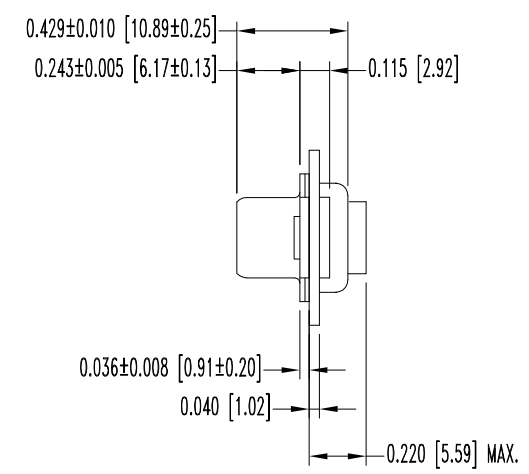
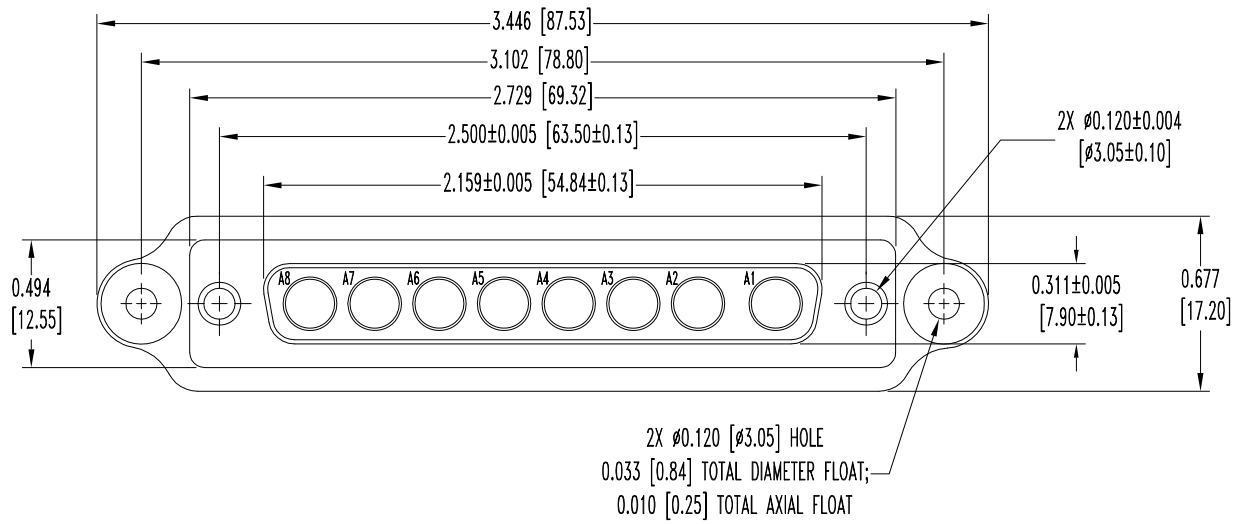


THIS DRAWING CONTAINS INFORMATION PROPRIETARY TO POSITRONIC AND ITS SUBSIDIARIES. POSITRONIC BELIEVES THE DATA ON THIS DRAWING TO BE RELIABLE, SINCE THE TECHNICAL INFORMATION IS GIVEN FREE OF CHARGE, THE USER EMPLOYS SUCH INFORMATION AT HIS OWN DISCRETION AND RISK. POSITRONIC ASSUMES NO RESPONSIBILITY FOR RESULTS OBTAINED OR DAMAGES INCURRED FROM USE OF SUCH INFORMATION IN WHOLE OR IN PART.

DATE	REV	REVISION RECORD	APP	DR	CK
7-1-09	NC	ECO 31258	TK	BS	TK



NOTES:

- MATERIALS AND FINISHES:  
 INSULATOR: GLASS FILLED POLYESTER PER MIL-M-24519, UL 94V-0, BLUE COLOR.  
 SHELLS: STEEL, ZINC PLATE WITH CHROMATE SEAL.  
 MOUNTING PLATE: ALUMINUM, YELLOW ANODIZED.  
 RIVETS: BRASS, ZINC PLATE WITH CHROMATE SEAL.  
 FLOAT BUSHINGS: BRASS, ZINC PLATE CHROMATE SEAL.  
 FLOAT WASHERS: BRASS, ZINC PLATE CHROMATE SEAL.
- ELECTRICAL CHARACTERISTICS:  
 INSULATOR RESISTANCE: 5 G OHMS.  
 WORKING VOLTAGE: 300 V r.m.s.
- TEMPERATURE RANGE: -55°C TO +125°C.
- THIS MOS ALLOWS FOR MOUNTING PLATE TO BE INSTALLED.
- DIMENSIONS ARE IN INCHES [MILLIMETERS].

PANEL CUTOUT

	<b>POSITRONIC INDUSTRIES INC.</b> www.connectpositronic.com		FSCM 28198
	DECIMAL TOL. ± 0.015 [0.38]	CBD SERIES	SCALE N.T.S.
ANGULAR TOL. ± 5°	DATE 7-1-09	DRAWING NUMBER SK10873	REV. NC
TITLE CBD8W8F00000-759.1			
APPROVED BY T KEPLEY			