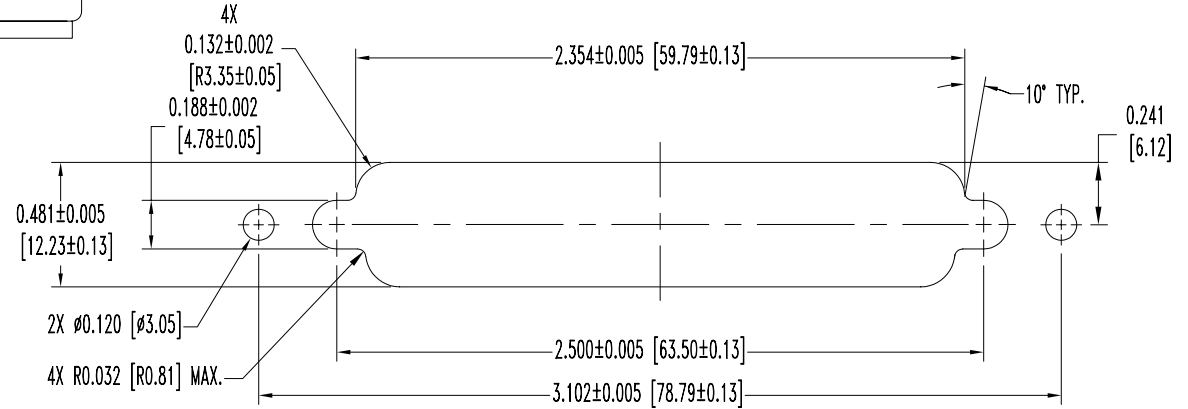
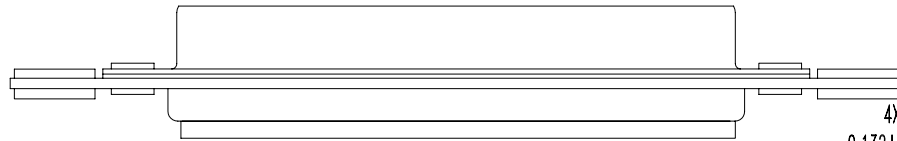
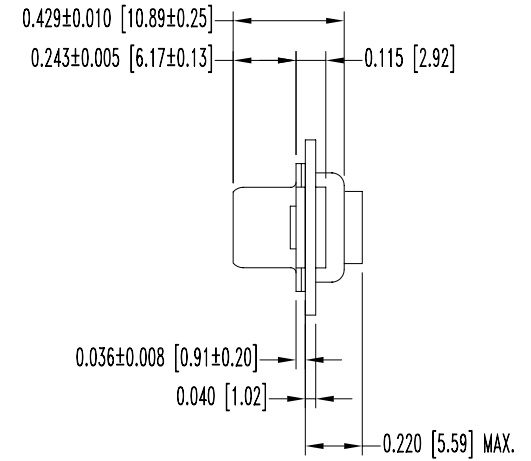
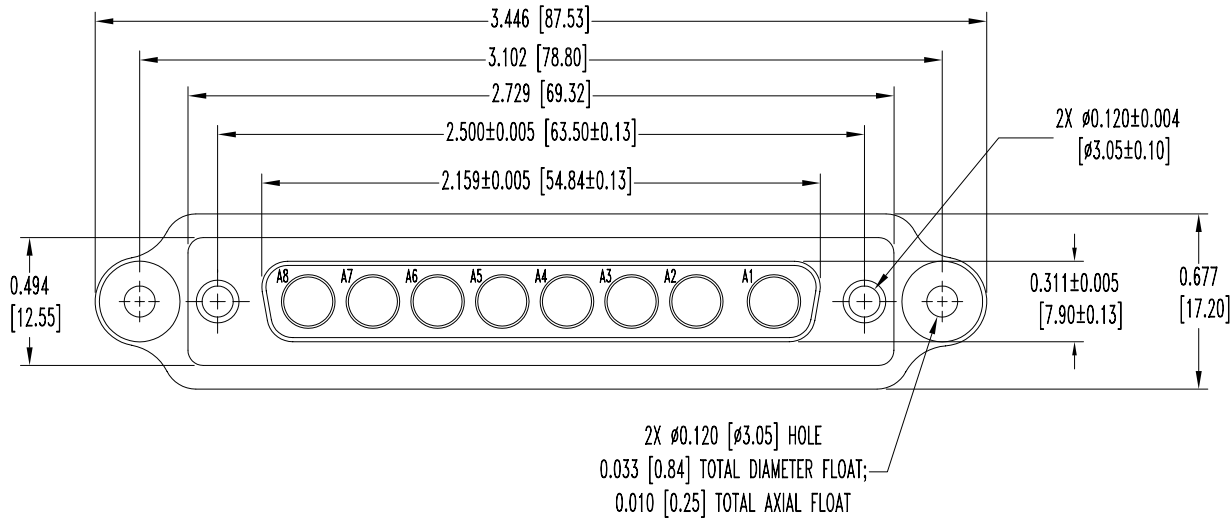


SK1651

POSITRONIC INDUSTRIES BELIEVES THE DATA ON THIS DRAWING TO BE RELIABLE. SINCE THE TECHNICAL INFORMATION IS GIVEN FREE OF CHARGE, THE USER EMPLOYS SUCH INFORMATION AT HIS OWN DISCRETION AND RISK. POSITRONIC INDUSTRIES ASSUMES NO RESPONSIBILITY FOR RESULTS OBTAINED OR DAMAGES INCURRED FROM USE OF SUCH INFORMATION IN WHOLE OR IN PART.

DATE	REV	REVISION RECORD	APP	DR	CK
12-12-07	A	ECO 28763	RCW	YK	COLE



PANEL CUTOUT

NOTES:

- MATERIALS AND FINISHES:  
INSULATOR: GLASS FILLED POLYESTER PER MIL-M-24519, UL 94V-0, BLUE COLOR.  
SHELLS: STEEL, TIN PLATE.  
MOUNTING PLATE: ALUMINUM, YELLOW ANODIZED.  
RIVETS: BRASS, ZINC PLATE WITH CHROMATE SEAL.  
FLOAT BUSHINGS: BRASS, ZINC PLATE CHROMATE SEAL.  
FLOAT WASHERS: BRASS, ZINC PLATE CHROMATE SEAL.
- ELECTRICAL CHARACTERISTICS:  
INSULATOR RESISTANCE: 5 G OHMS.  
WORKING VOLTAGE: 300 V r.m.s.
- TEMPERATURE RANGE: -55°C TO +125°C.
- THIS MOS ALLOWS FOR MOUNTING PLATE TO BE INSTALLED.
- DIMENSIONS ARE IN INCHES [MILLIMETERS].

	<b>POSITRONIC INDUSTRIES INC.</b> www.connectpositronic.com		FSCM 28198
	DECIMAL TOL. ± 0.015 [0.38]	CBD SERIES	SCALE N.T.S.
ANGULAR TOL. ± 5°	DATE 12-12-07	DRAWING NUMBER SK1651	APPROVED BY RCW
TITLE CBD8W8F0000X-759.1			
REV. A			REV. A