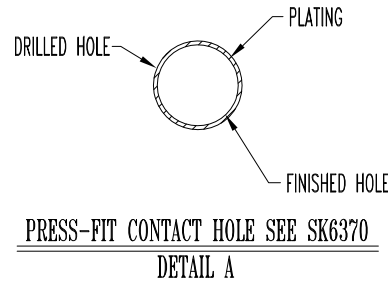
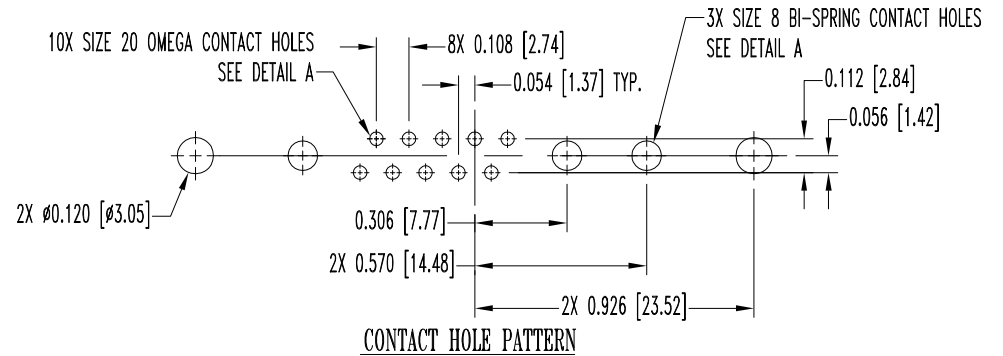
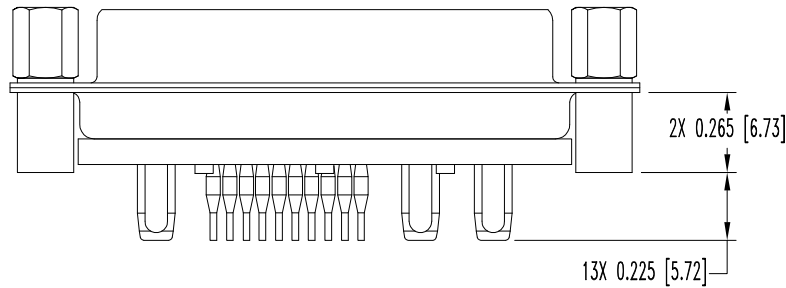
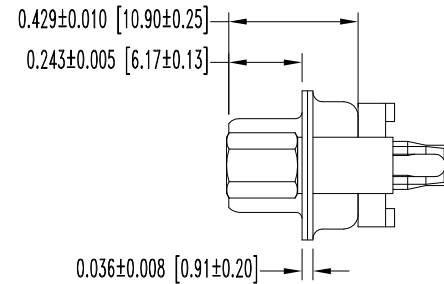
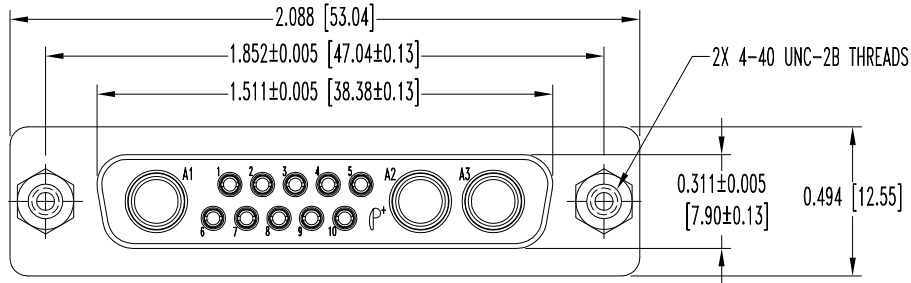


SK10727

THIS DRAWING CONTAINS INFORMATION PROPRIETARY TO POSITRONIC AND ITS SUBSIDIARIES. POSITRONIC BELIEVES THE DATA ON THIS DRAWING TO BE RELIABLE. SINCE THE TECHNICAL INFORMATION IS GIVEN FREE OF CHARGE, THE USER EMPLOYS SUCH INFORMATION AT HIS OWN DISCRETION AND RISK. POSITRONIC ASSUMES NO RESPONSIBILITY FOR RESULTS OBTAINED OR DAMAGES INCURRED FROM USE OF SUCH INFORMATION IN WHOLE OR IN PART.

DATE	REV	REVISION RECORD	APP	DR	CK
5-13-09	NC	ECO 31053	TK	BS	TK
3-16-10	A	ECO 32244	COLE	BE	SY



NOTES:

1. MATERIAL AND FINISHES:

- INSULATOR: GLASS-FILLED POLYESTER PER ASTM D5927, UL 94V-0, BLUE COLOR.
- POWER CONTACTS: MACHINED COPPER ALLOY, GOLD FLASH OVER NICKEL.
- SIGNAL CONTACTS: COPPER ALLOY WITH BERYLLIUM COPPER CLIP, 0.000050 [1.25µ] GOLD OVER NICKEL.
- SHELLS: STEEL, ZINC PLATE WITH CHROMATE SEAL.
- JACKSCREW SYSTEMS: BRASS, ZINC PLATE WITH CHROMATE SEAL.

2. DETAILED PRODUCT, ELECTRICAL, AND MECHANICAL INFORMATION IS AVAILABLE IN THE LATEST STANDARD DENSITY COMBO-D PRODUCT PUBLICATION. VISIT [CONNECTPOSITRONIC.COM/PRODUCTS/1/STANDARD DENSITY COMBO-D](http://CONNECTPOSITRONIC.COM/PRODUCTS/1/STANDARD DENSITY COMBO-D) OR [CONNECTPOSITRONIC.COM](http://CONNECTPOSITRONIC.COM).

3. DIMENSIONS ARE IN INCHES [MILLIMETERS].

		<b>POSITRONIC INDUSTRIES INC.</b> www.connectpositronic.com		FSCM 28198
		DECIMAL TOL. $\pm 0.015$ [0.38]	CBM SERIES	SCALE N.T.S.
TITLE <b>CBM13W3S93S0T0</b>		DATE 5-13-09	DRAWING NUMBER SK10727	REV. A
ANGULAR TOL. $\pm 5^\circ$				