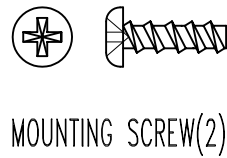
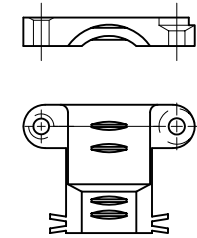
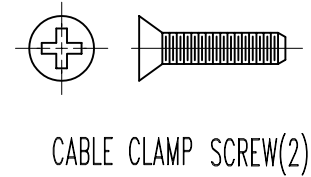
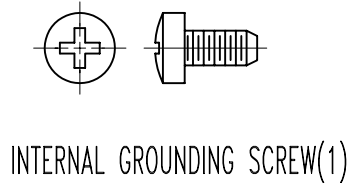
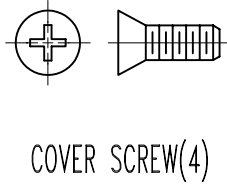
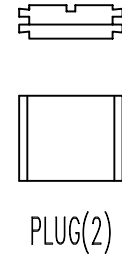
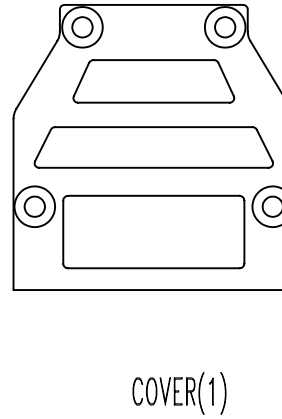
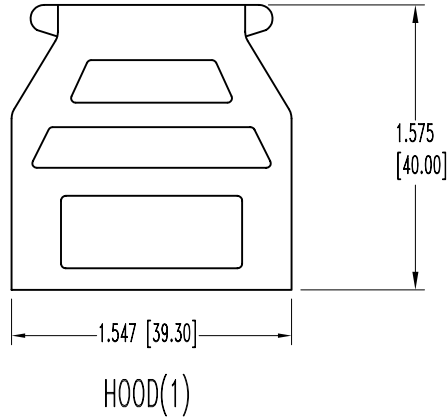


SK6474


POSITRONIC INDUSTRIES BELIEVES THE DATA ON THIS DRAWING TO BE RELIABLE. SINCE THE TECHNICAL INFORMATION IS GIVEN FREE OF CHARGE, THE USER EMPLOYS SUCH INFORMATION AT HIS OWN DISCRETION AND RISK. POSITRONIC INDUSTRIES ASSUMES NO RESPONSIBILITY FOR RESULTS OBTAINED OR DAMAGES INCURRED FROM USE OF SUCH INFORMATION IN WHOLE OR IN PART.

DATE	REV	REVISION RECORD	APP	DR	CK
8-15-05	NC	ECO 24505	COLE	YK	TK
1-9-07	A	ECO 27308		YK	



NOTES:

- MATERIAL AND FINISHES:  
HOOD AND CABLE CLAMPS: ZINC, DIE CAST.  
SCREWS: STEEL, NICKEL PLATE.
- HOOD CONSISTS OF: (1) HOOD, (1) COVER, (2) PLUGS, (4) COVER SCREWS, (1) INTERNAL SCREW, (2) MOUNTING SCREWS, 1 SET CABLE CLAMPS AND (2) CABLE CLAMP SCREWS.
- DIMENSIONS ARE IN INCHES [MILLIMETERS].

 <b>POSITRONIC INDUSTRIES INC.</b> www.connectpositronic.com		SCALE		DRAWN BY	
DECIMAL TOL. ± N/A		D SERIES		N.T.S.	
ANGULAR TOL. ± N/A		DATE		REV.	
		8-15-05		A	
TITLE		DRAWING NUMBER		APPROVED BY	
D15000G00		SK6474		YK	