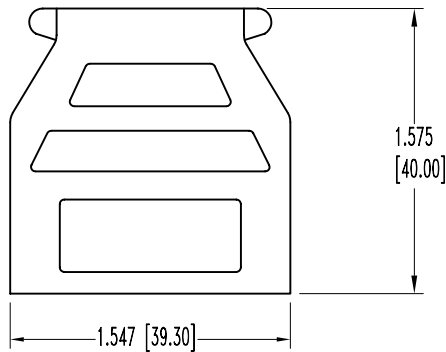
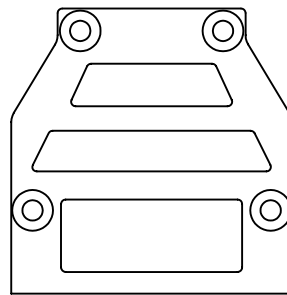


POSITRONIC INDUSTRIES BELIEVES THE DATA ON THIS DRAWING TO BE RELIABLE. SINCE THE TECHNICAL INFORMATION IS GIVEN FREE OF CHARGE, THE USER EMPLOYS SUCH INFORMATION AT HIS OWN DISCRETION AND RISK. POSITRONIC INDUSTRIES ASSUMES NO RESPONSIBILITY FOR RESULTS OBTAINED OR DAMAGES INCURRED FROM USE OF SUCH INFORMATION IN WHOLE OR IN PART.

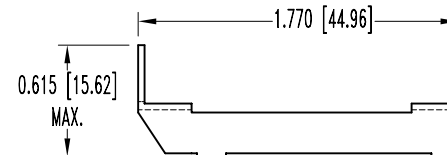
DATE	REV	REVISION RECORD	APP	DR	CK
12-22-06	B	ECO 27227		YK	



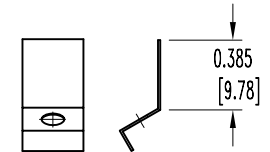
HOOD



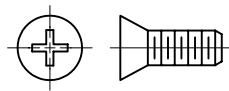
COVER



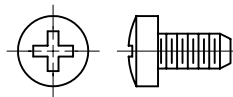
LOCKARM



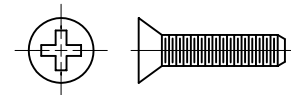
LOCKARM SPRING



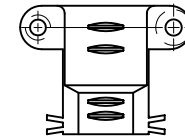
COVER SCREW(4)



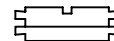
INTERNAL GROUNDING SCREW(1)



CABLE CLAMP SCREW(2)



CABLE CLAMP (1 SET)



PLUG(2)



MOUNTING SCREW(2)

NOTES:

- MATERIALS AND FINISHES:
 HOOD AND COVER: ZINC, DIE CAST.
 CABLE CLAMPS: ZINC, DIE CAST.
 LOCK LEVER: STEEL, NICKEL PLATE.
 SCREWS: STEEL, NICKEL PLATE.
 LOCKARM SPRING: BERYLLIUM COPPER, NICKEL PLATE.
 MOUNTING SCREWS: STAINLESS STEEL, PASSIVATED.
- DIMENSIONS ARE IN INCHES [MILLIMETERS].

		POSITRONIC INDUSTRIES INC. www.connectpositronic.com	
DECIMAL TOL. ± 0.015 [0.38]	TITLE D SERIES	SCALE N.T.S.	DRAWN BY YK
DATE 12-21-06		DRAWING NUMBER SK1988	
ANGULAR TOL. ± 5°		REV. B	