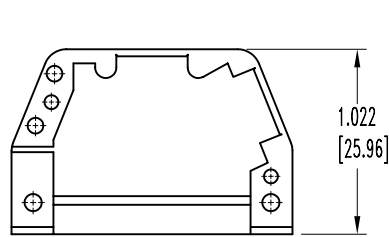
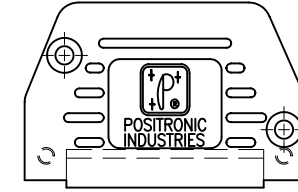
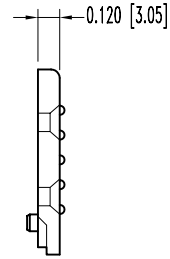
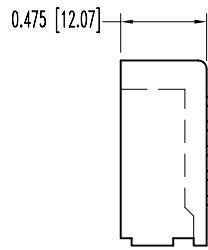


POSITRONIC INDUSTRIES BELIEVES THE DATA ON THIS DRAWING TO BE RELIABLE. SINCE THE TECHNICAL INFORMATION IS GIVEN FREE OF CHARGE, THE USER EMPLOYS SUCH INFORMATION AT HIS OWN DISCRETION AND RISK. POSITRONIC INDUSTRIES ASSUMES NO RESPONSIBILITY FOR RESULTS OBTAINED OR DAMAGES INCURRED FROM USE OF SUCH INFORMATION IN WHOLE OR IN PART.

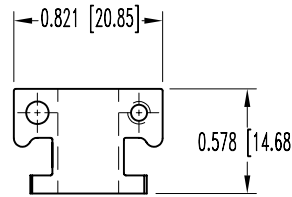
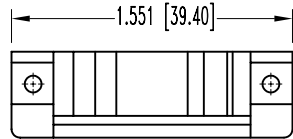
DATE	REV	REVISION RECORD	APP	DR	CK
1-23-07	NC	ECO 27369		YK	



"J" HOOD

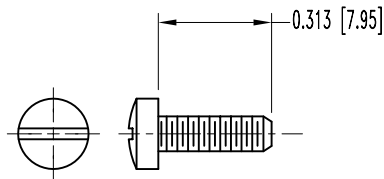


HOOD COVER



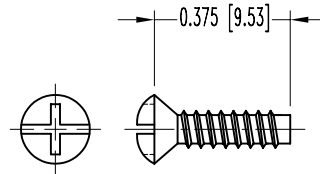
CABLE CLAMP

2X



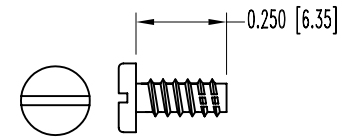
CABLE CLAMP SCREW

2X



COVER SCREW

2X



MOUNTING SCREW

2X

NOTES:

1. MATERIALS AND FINISHES:

HOOD AND HOOD COVER: GLASS-FILLED NYLON, 94V-0, COLOR BLACK.

CABLE CLAMP: STEEL, NICKEL PLATE.

CABLE CLAMP SCREW: BRASS, ZINC PLATE WITH CHROMATE SEAL.

SCREWS: STEEL, ZINC PLATE WITH CHROMATE SEAL.

2. DIMENSIONS ARE IN INCHES[MILLIMETERS].

		POSITRONIC INDUSTRIES INC. www.connectpositronic.com	
DECIMAL TOL. ± 0.015 [0.38]	D SERIES	SCALE N.T.S.	DRAWN BY YK
ANGULAR TOL. ± 5°	DATE 1-23-07	DRAWING NUMBER SK8285	REV. NC
TITLE D15000J00		APPROVED BY	