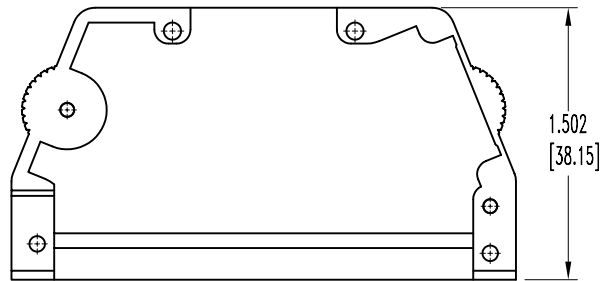
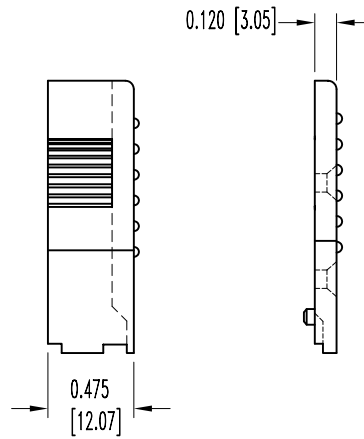


POSITRONIC INDUSTRIES BELIEVES THE DATA ON THIS DRAWING TO BE RELIABLE. SINCE THE TECHNICAL INFORMATION IS GIVEN FREE OF CHARGE, THE USER EMPLOYS SUCH INFORMATION AT HIS OWN DISCRETION AND RISK. POSITRONIC INDUSTRIES ASSUMES NO RESPONSIBILITY FOR RESULTS OBTAINED OR DAMAGES INCURRED FROM USE OF SUCH INFORMATION IN WHOLE OR IN PART.

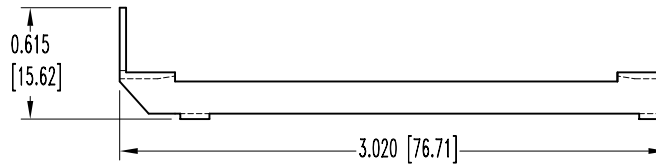
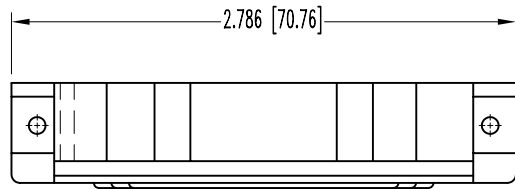
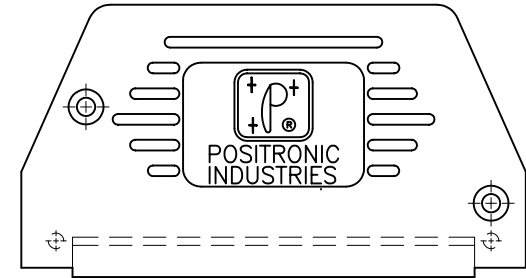
DATE	REV	REVISION RECORD	APP	DR	CK
9-23-05	NC	ECO 24726		YK	



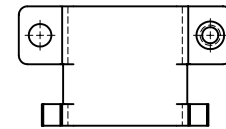
"J" HOOD



HOOD COVER

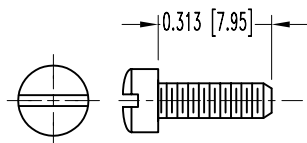


LOCKARM LEVER



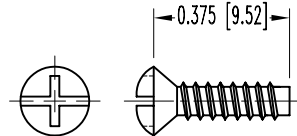
CABLE CLAMP

2X



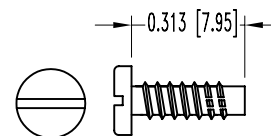
CABLE CLAMP SCREW

2X



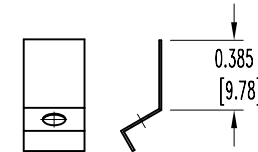
COVER SCREW

2X



MOUNTING SCREW

2X



LOCKARM SPRING

NOTES:

- MATERIALS AND FINISHES:  
 HOOD AND HOOD COVER: GLASS FILLED NYLON, 94V-0, BLACK.  
 LOCKARM LEVER: STEEL, NICKEL PLATE.  
 LOCKARM SPRING: STEEL, NICKEL PLATE.  
 CABLE CLAMPS: STEEL, NICKEL PLATE.  
 CABLE CLAMP SCREWS: BRASS, ZINC PLATE WITH DICHROMATE SEAL.  
 SCREWS: STEEL, ZINC PLATE WITH BLUE CHROMATE SEAL.
- DIMENSIONS ARE IN INCHES [MILLIMETERS].

 <b>POSITRONIC INDUSTRIES INC.</b> www.connectpositronic.com		SCALE	DRAWN BY
		N.T.S.	YK
DECIMAL TOL.	D SERIES	APPROVED BY	
± 0.015 [0.38]			
ANGULAR TOL.	TITLE		REV.
± 5°	D37000JVLO		NC
	DATE	DRAWING NUMBER	
	9-23-05	SK6595	