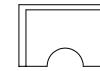
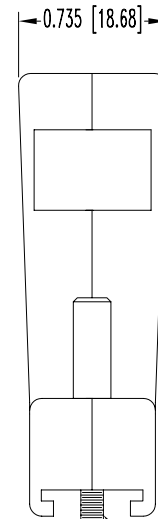
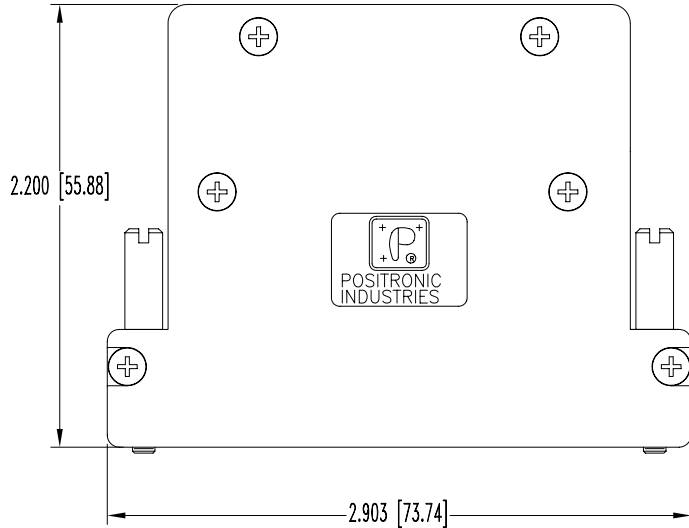
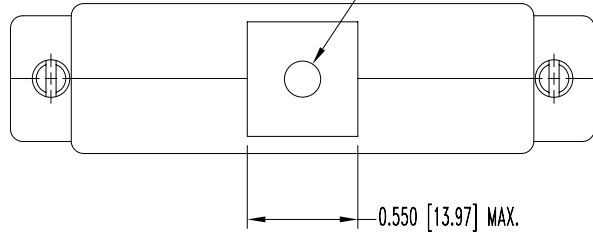


SK9116

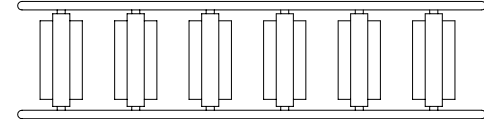
POSITRONIC INDUSTRIES BELIEVES THE DATA ON THIS DRAWING TO BE RELIABLE. SINCE THE TECHNICAL INFORMATION IS GIVEN FREE OF CHARGE, THE USER EMPLOYS SUCH INFORMATION AT HIS OWN DISCRETION AND RISK. POSITRONIC INDUSTRIES ASSUMES NO RESPONSIBILITY FOR RESULTS OBTAINED OR DAMAGES INCURRED FROM USE OF SUCH INFORMATION IN WHOLE OR IN PART.

DATE	REV	REVISION RECORD	APP	DR	CK
11-29-07	NC	ECO 28708	RCW	YK	TK

CABLE OPENING
 MIN. 0.100 [2.54]
 MAX. 0.550 [13.97] X
 0.570 [14.48]



TYPICAL INSERT



INSERT TREE ASSEMBLY

NOTES:

- MATERIALS AND FINISHES:
 HOOD, COVER AND INSERT: COMPOSITE, CONDUCTIVE VOLUME RESISTIVITY (1.0 OHM-cm MAX.), UL94V-0.
 ATTENUATION: 40+ DECIBELS.
 JACKSCREWS: STEEL WITH ZINC PLATE WITH CHROMATE SEAL.
 CABLE CLAMPS: STEEL, NICKEL PLATE.
 CABLE CLAMP SCREWS: BRASS, ZINC PLATE WITH CHROMATE SEAL.
 COVER SCREWS: STAINLESS STEEL, PASSIVATED.
- DIMENSIONS ARE IN INCHES [MILLIMETERS].

	POSITRONIC INDUSTRIES INC. www.connectpositronic.com		FSCM 28198
	DECIMAL TOL. ± 0.015 [0.38]	D SERIES	SCALE N.T.S.
ANGULAR TOL. ± 5°	DATE 11-29-07	TITLE D37000Z00	APPROVED BY RCW
	DRAWING NUMBER SK9116	REV. NC	