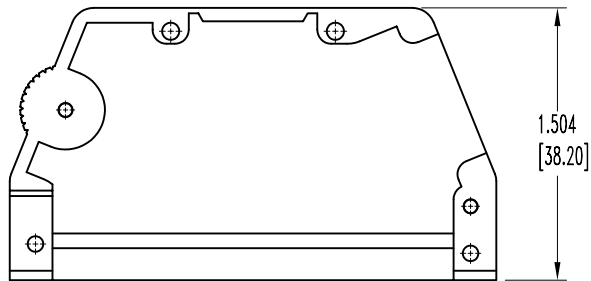


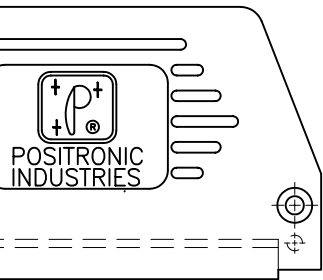
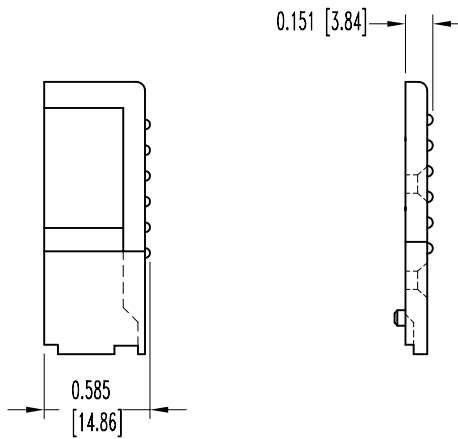
SK7763

POSITRONIC INDUSTRIES BELIEVES THE DATA ON THIS DRAWING TO BE RELIABLE. SINCE THE TECHNICAL INFORMATION IS GIVEN FREE OF CHARGE, THE USER EMPLOYS SUCH INFORMATION AT HIS OWN DISCRETION AND RISK. POSITRONIC INDUSTRIES ASSUMES NO RESPONSIBILITY FOR RESULTS OBTAINED OR DAMAGES INCURRED FROM USE OF SUCH INFORMATION IN WHOLE OR IN PART.

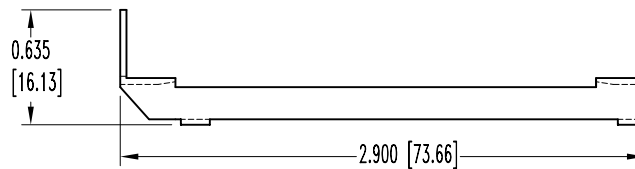
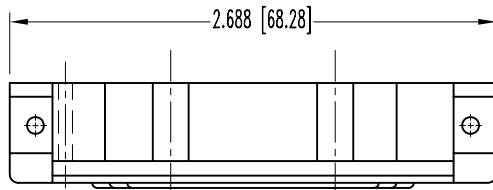
DATE	REV	REVISION RECORD	APP	DR	CK
7-12-06	NC	ECO 26350		YK	



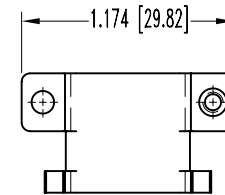
"L" HOOD  
SIDE OPENING



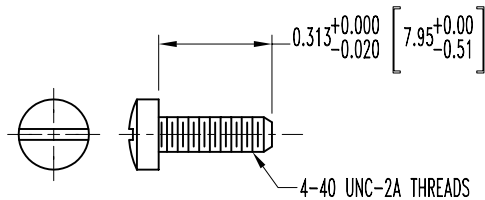
HOOD COVER



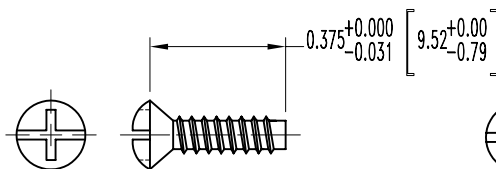
LOCKARM LEVER



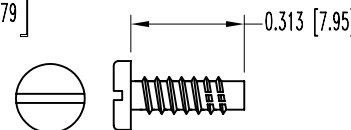
CABLE CLAMP  
2X



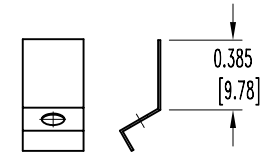
2X CABLE CLAMP SCREW  
ENLARGED



2X COVER SCREW  
ENLARGED



2X MOUNTING SCREW  
ENLARGED



LOCKARM SPRING

NOTES:

1. MATERIALS AND FINISHES:

HOOD AND HOOD COVER: GLASS FILLED NYLON, 94 V-0, COLOR BLACK.

LOCKARM LEVER: STEEL, NICKEL PLATE.

LOCKARM SPRING: BERYLLIUM COPPER, NICKEL PLATE.

CABLE CLAMP: STEEL, NICKEL PLATE.

COVER AND MOUNTING SCREWS: STEEL, ZINC PLATE.

CABLE CLAMP SCREWS: BRASS, ZINC PLATE WITH DICHROMATE SEAL.

2. DIMENSIONS ARE IN INCHES[MILLIMETERS].

 <b>POSITRONIC INDUSTRIES INC.</b> www.connectpositronic.com		SCALE	DRAWN BY
		N.T.S.	YK
DECIMAL TOL.	D SERIES		APPROVED BY
± 0.015 [0.38]	TITLE		
	D50000LVL0		
ANGULAR TOL.	DATE	DRAWING NUMBER	REV.
± 5°	7-12-06	SK7763	NC