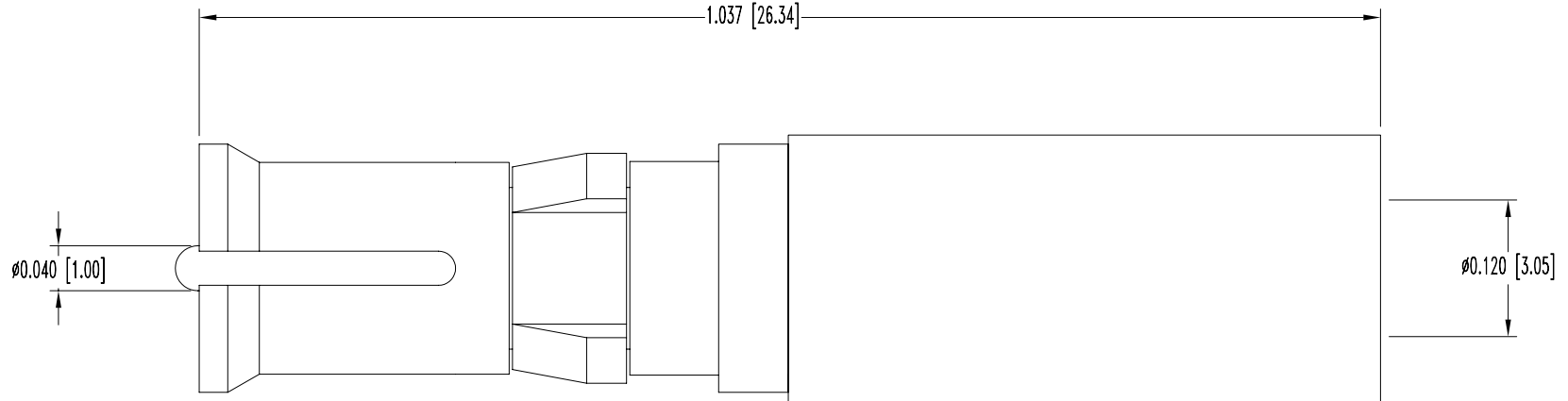


SK2556


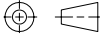
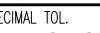
THIS DRAWING CONTAINS INFORMATION PROPRIETARY TO POSITRONIC AND ITS SUBSIDIARIES. POSITRONIC BELIEVES THE DATA ON THIS DRAWING TO BE RELIABLE, SINCE THE TECHNICAL INFORMATION IS GIVEN FREE OF CHARGE, THE USER EMPLOYS SUCH INFORMATION AT HIS OWN DISCRETION AND RISK. POSITRONIC ASSUMES NO RESPONSIBILITY FOR RESULTS OBTAINED OR DAMAGES INCURRED FROM USE OF SUCH INFORMATION IN WHOLE OR IN PART.

DATE	REV	REVISION RECORD	APP	DR	CK
2-19-08	A	ECO 29024		YK	COLE



NOTES:

1. MATERIAL: COPPER ALLOY WITH PTFE TEFLON INSULATOR.
2. FINISH: SIGNAL CONTACT-0.000030 [0.75μ] GOLD OVER NICKEL. CONTACT BODY-GOLD FLASH OVER NICKEL.
3. ELECTRICAL CHARACTERISTICS:
  - INITIAL CONTACT RESISTANCE: 0.008 OHMS MAXIMUM.
  - NOMINAL IMPEDANCE: 50 OHMS.
  - INSERTION LOSS: -0.46dB AT 1 GHz
  - 1.5 dB AT 2 GHz
  - VSWR: 1.15 AVERAGE AT 1 GHz
  - 1.56 AVERAGE AT 2 GHz
  - PROOF VOLTAGE: 1000 V r.m.s.
  - TEMPERATURE RANGE: -55°C TO +125°C.
4. DIMENSIONS ARE IN INCHES [MILLIMETERS].

		<b>POSITRONIC INDUSTRIES INC.</b> www.connectpositronic.com		FSCM 28198
		CBD SERIES	SCALE N.T.S.	DRAWN BY YK
DECIMAL TOL. ± 0.015 [0.38]		TITLE FC4104D		
ANGULAR TOL. ± 5°		DATE 2-19-08	DRAWING NUMBER SK2556	REV. A