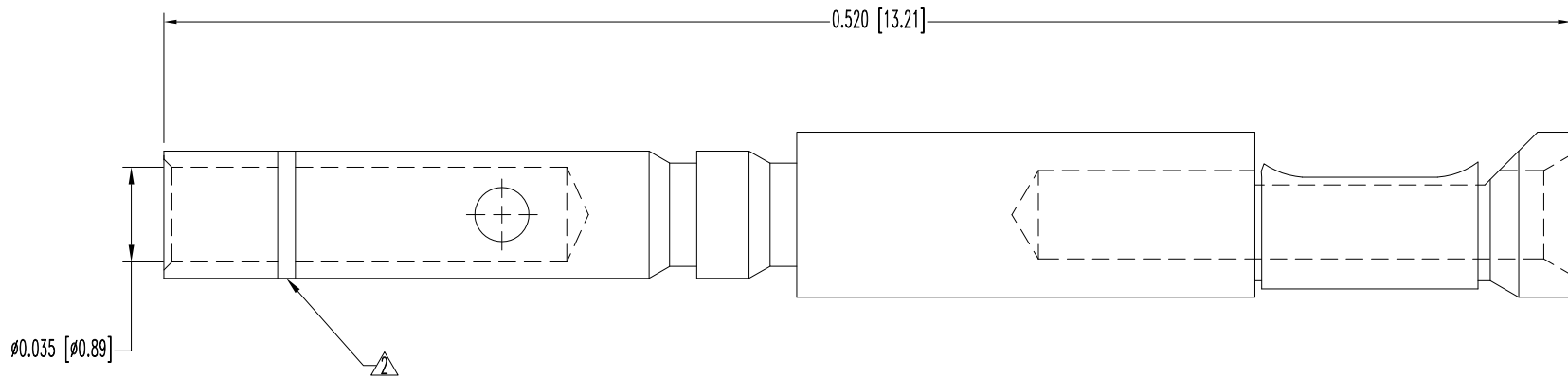


SK10691

THIS DRAWING CONTAINS INFORMATION PROPRIETARY TO POSITRONIC IND. INC. ANY REPRODUCTION, DISCLOSURE OR USE OF THIS DRAWING IS EXPRESSLY PROHIBITED, EXCEPT AS POSITRONIC IND. INC. MAY OTHERWISE AGREE IN WRITING.

| DATE    | REV | REVISION RECORD | APP | DR | CK   |
|---------|-----|-----------------|-----|----|------|
| 5-07-09 | NC  | ECO 31038       | RCW | BS | COLE |
|         |     |                 |     |    |      |
|         |     |                 |     |    |      |



NOTES:

1. MATERIAL:  
 CONTACT: COPPER ALLOY, 0.000015 [0.37 $\mu$ ] GOLD PLATE  
 SPRING CLIP: BERYLLIUM COPPER, GOLD FLASH OVER NICKEL PLATE
2. CONTACT PERMANENTLY MARKED WITH RED ID BAND.
3. DIMENSIONS ARE IN INCHES [MILLIMETERS].

|  |  |           |  |                |  |
|--|--|-----------|--|----------------|--|
|  <b>POSITRONIC INDUSTRIES INC.</b><br>SPRINGFIELD, MISSOURI 65801 |  | SCALE     |  | DRAWN BY       |  |
|  |  | N.T.S.    |  | B SHELEDY      |  |
| DECIMAL TOL.   |  | DD SERIES |  | APPROVED BY    |  |
| $\pm 0.015$ [0.38]   |  | TITLE     |  | R WILLIAMS     |  |
| ANGULAR TOL.   |  | DATE      |  | DRAWING NUMBER |  |
| $\pm 5^\circ$  |  | 5-07-09   |  | SK10691        |  |
|  |  |           |  | REV.           |  |
|  |  |           |  | NC             |  |