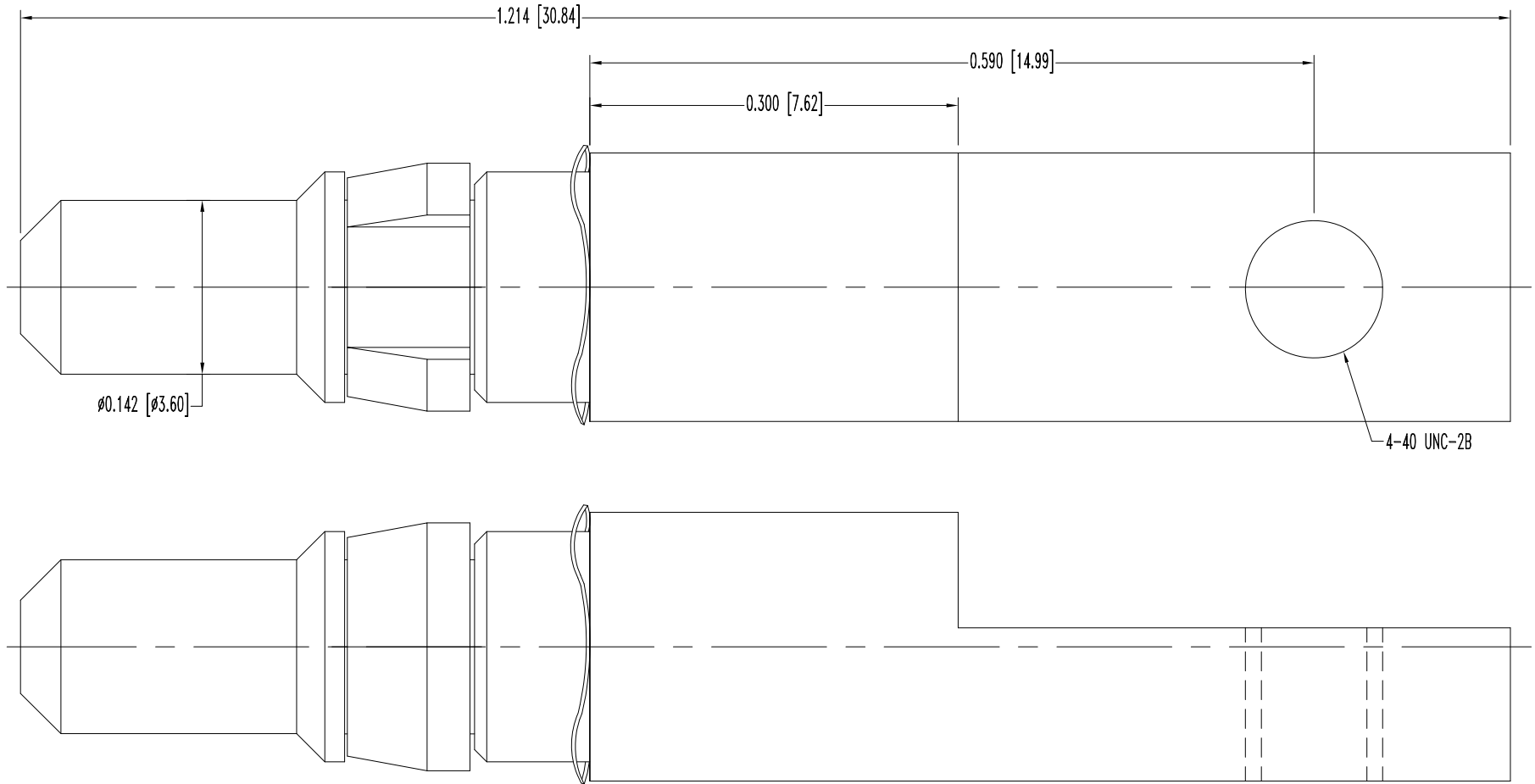


SK11126

THIS DRAWING CONTAINS INFORMATION PROPRIETARY TO POSITRONIC AND ITS SUBSIDIARIES. POSITRONIC RELIEVES THE DATA ON THIS DRAWING TO BE RELIABLE. SINCE THE TECHNICAL INFORMATION IS GIVEN FREE OF CHARGE, THE USER EMPLOYS SUCH INFORMATION AT HIS OWN DISCRETION AND RISK. POSITRONIC ASSUMES NO RESPONSIBILITY FOR RESULTS OBTAINED OR DAMAGES INCURRED FROM USE OF SUCH INFORMATION IN WHOLE OR IN PART.

DATE	REV	REVISION RECORD	APP	DR	CK
12-7-09	NC	ECO 31730	TK	TK	TK
3-26-10	A	ECO 32294	COLE	BE	SY
6-04-10	B	ECO 32563	TK	BS	TK



NOTES:

1. MATERIALS AND FINISHES:

CONTACT: HIGH CONDUCTIVITY COPPER ALLOY, GOLD FLASH OVER NICKEL PLATE.

WAVE WASHER: BERYLLIUM COPPER, GOLD FLASH OVER NICKEL PLATE.


RETENTION RING: BERYLLIUM COPPER WITH NICKEL PLATE.

2. DETAILED PRODUCT, ELECTRICAL, AND MECHANICAL INFORMATION IS AVAILABLE IN THE LATEST STANDARD DENSITY COMBO-D

PRODUCT PUBLICATION. CONNECTPOSITRONIC.COM/PRODUCTS/1/STANDARD DENSITY COMBO-D OR CONNECTPOSITRONIC.COM.

3. CONTACTS ARE ROHS COMPLIANT PER ROHS DIRECTIVE 2002/95/EC OF 27 JAN 2003.

4. DIMENSIONS ARE IN INCHES [MILLIMETERS].

 POSITRONIC INDUSTRIES INC. www.connectpositronic.com		FSCM 28198	
		SCALE N.T.S.	DRAWN BY T. KEPLEY
DECIMAL TOL. ± 0.015 [0.38]	CBD SERIES	APPROVED BY T. KEPLEY	
ANGULAR TOL. ± 5°	TITLE MBB4000DS/AA		REV. B
DATE 12-7-09	DRAWING NUMBER SK11126		