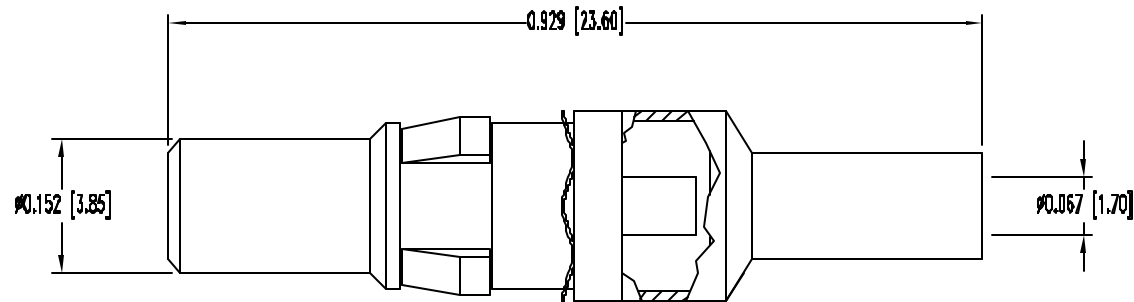


POSITRONIC INDUSTRIES BELIEVES THE DATA ON THIS DRAWING TO BE RELIABLE. SINCE THE TECHNICAL INFORMATION IS GIVEN FREE OF CHARGE, THE USER EMPLOYS SUCH INFORMATION AT HIS OWN DISCRETION AND RISK. POSITRONIC INDUSTRIES ASSUMES NO RESPONSIBILITY FOR RESULTS OBTAINED OR DAMAGES INCURRED FROM USE OF SUCH INFORMATION IN WHOLE OR IN PART.

SK4039

DATE	REV	REVISION RECORD	APP	DR	CK
11-14	01	ECO 18615		ME	



NOTES:

1. MATERIALS AND FINISHES:

- INSULATING MATERIAL: [DIELECTRIC] PTFE, TEFLON.
- CONTACT: COPPER ALLOY WITH PTFE TEFLON INSULATOR.
- INNER CONTACTS: PHOSPHOR BRONZE, 0.000030 INCH. [0.75µ] GOLD OVER NICKEL
- CONTACT BODY: BRASS, GOLD FLASH OVER NICKEL.

2. ELECTRICAL CHARACTERISTICS:

- INITIAL CONTACT RESISTANCE: 0.008 OHMS MAXIMUM.
- NOMINAL IMPEDANCE: 50 OHMS.
- INSERTION LOSS: -0.46 dB AT 1 GHZ
-1.5 dB AT 2 GHZ
- VSWR: 1.15 AVERAGE AT 1 GHZ.
1.56 AVERAGE AT 2 GHZ.
- PROOF VOLTAGE: 1,000 V r.m.s.

- 3. TEMPERATURE RANGE: -55°C TO +125°C.
- 4. DIMENSIONS ARE IN INCHES [MILLIMETERS].

		POSITRONIC INDUSTRIES INC. www.connectpositronic.com	
		DECIMAL TOL. ± 0.015 [0.38]	TITLE MCC4102D
WF # 4165	DATE 11-14-01	SCALE N.T.S.	DRAWN BY M. ENBA
ANGULAR TOL. $\pm 5^\circ$	DRAWING NUMBER SK4039	APPROVED BY	REV. NC