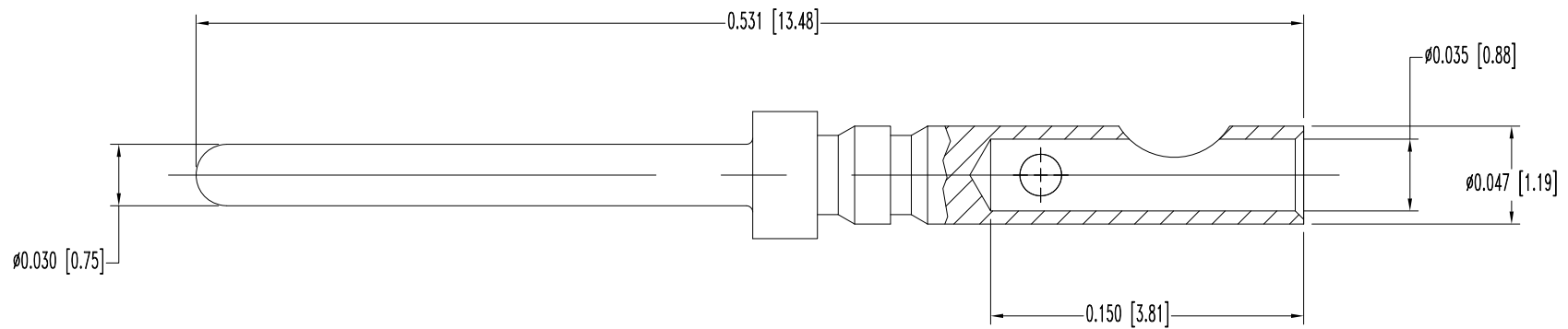


SK9555

THIS DRAWING CONTAINS INFORMATION PROPRIETARY TO POSITRONIC AND ITS SUBSIDIARIES. POSITRONIC BELIEVES THE DATA ON THIS DRAWING TO BE RELIABLE. SINCE THE TECHNICAL INFORMATION IS GIVEN FREE OF CHARGE, THE USER EMPLOYS SUCH INFORMATION AT HIS OWN DISCRETION AND RISK. POSITRONIC ASSUMES NO RESPONSIBILITY FOR RESULTS OBTAINED OR DAMAGES INCURRED FROM USE OF SUCH INFORMATION IN WHOLE OR IN PART.

DATE	REV	REVISION RECORD	APP	DR	CK
7-10-08	NC	ECO 29662	TK	YK	COLE



NOTES:

1. MATERIAL: BRASS, GOLD FLASH OVER NICKEL FINISH.
2. DIMENSIONS ARE IN INCHES [MILLIMETERS].

 POSITRONIC INDUSTRIES INC. www.connectpositronic.com		FSCM 28198	
 DECIMAL TOL. ± 0.015 [0.38]	DD SERIES	SCALE N.T.S.	DRAWN BY YK
	APPROVED BY T KEPLEY		
	TITLE MS8022D		
ANGULAR TOL. $\pm 5^\circ$	DATE 7-10-08	DRAWING NUMBER SK9555	REV. NC