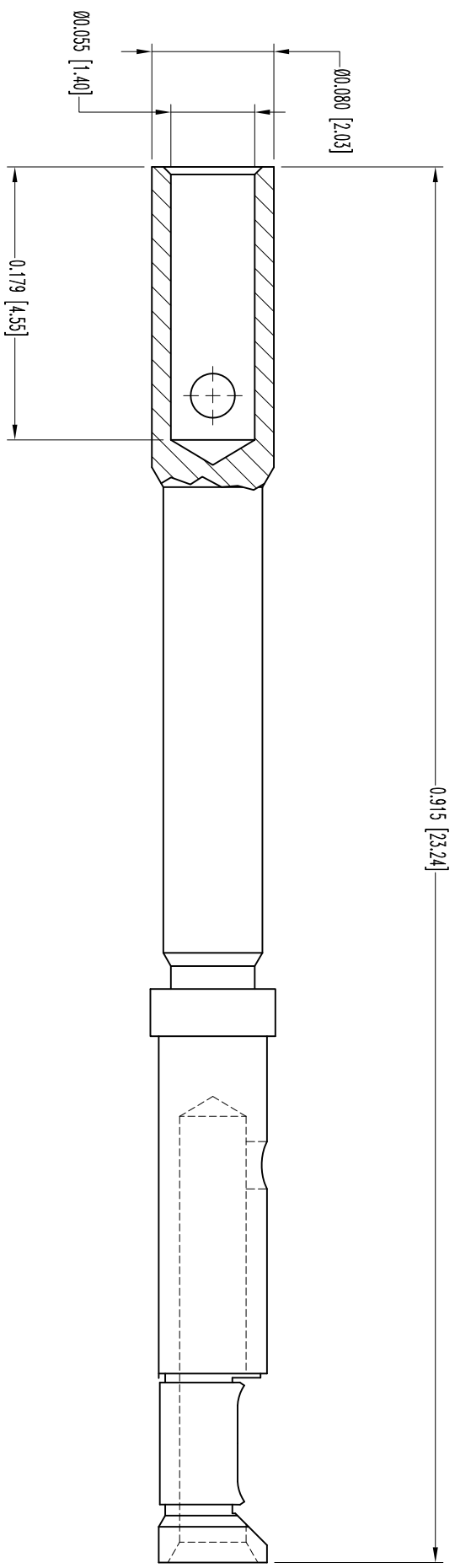





THIS DRAWING CONTAINS INFORMATION PROPRIETARY TO POSITRONIC INDUSTRIES INC. THE DATA ON THIS DRAWING TO BE RELEASED SINCE THE USER APPROVES SUCH INFORMATION AT HIS OWN DISCRETION. RESULTS OBTAINED OR DAMAGES INCURRED FROM USE OF SUCH INFORMATION IN WHOLE OR IN PART.



SK10837

| DATE | REV | REVISION RECORD | APP | DR | OK |
|---------|-----|-----------------|------|----|------|
| 6-12-09 | NC | ECO 31165 | COLL | BS | COLL |
| 7-20-11 | A | ECO 34277 | COLL | BS | COLL |
| | | | | | |
| | | | | | |

- NOTES:
1. MATERIALS AND FINISHES:
CONTACT: PRECISION MACHINED COPPER ALLOY, GOLD FLASH OVER NICKEL PLATE.
SPRING CLIP: BERYLLIUM COPPER, GOLD FLASH OVER NICKEL PLATE.
 2. DETAILED PRODUCT, MECHANICAL, AND ELECTRICAL INFORMATION IS AVAILABLE IN THE LATEST STANDARD DENSITY D-SUB PRODUCT PUBLICATION. VISIT CONNECTPOSITRONIC.COM/PRODUCTS/45/STANDARDENSITYD-SUBMINIATURE OR CONNECTPOSITRONIC.COM.
 3. DIMENSIONS ARE IN INCHES [MILLIMETERS].

| | | | |
|--|--|---------------------------|-----------------|
|  POSITRONIC INDUSTRIES INC. www.connectpositronic.com | | FSCM 28198 | |
|  DECIMAL TOL. ± 0.015 [0.38] |  ANGULAR TOL. $\pm 5^\circ$ | RD | SCALE N.T.S. |
| DATE 6-12-09 | | DRAWING NUMBER SK10837 | |
| TITLE FC6018D2 | | DRAWN BY B SHELLBUDY | |
| | | APPROVED BY COLL | |
| | | REV. A | |