



Positronic Industries
connectpositronic.com

Six Pole AutoShunt

AutoShunt

ORDERING INFORMATION - CODE NUMBERING SYSTEM

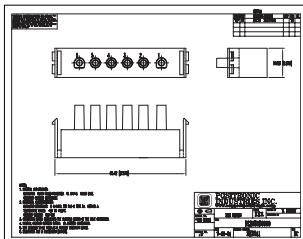
Specify Complete Connector By Selecting An Option From Step 1 Through 7

STEP	1	2	3	4	5	6	7	8	9
EXAMPLE	PLZ	6W6	F	3	0	0	A1	/AA	-XXX.X
STEP 1 - BASIC SERIES PLZ - PLZ Series									STEP 9 - SPECIAL OPTIONS -14 - 0.76µ [0.000030] gold over nickel -15 - 1.27µ [0.000050 inch] gold over nickel CONTACT TECHNICAL SALES FOR SPECIAL OPTIONS
STEP 2 - CONNECTOR VARIANTS 6W6 - Six (6) size 16 contacts									STEP 8 - ENVIRONMENTAL COMPLIANCE OPTIONS /AA - Compliant per EU Directive 2002/95/EC (RoHS)
STEP 3 - CONNECTOR GENDER M - Male F - Female									NOTE: If compliance to environmental legislation is not required, this step will not be used. Example: PLZ6W6F300A1
STEP 4 - CONTACT TERMINATION TYPE 0 - Order contacts separately for cable connectors. 1 - Removable contact, panel mount connector. Order contacts separately. *3 - Solder, Straight Printed Board Mount with 3.18 [0.125] tail extension.									
STEP 5 - MOUNTING STYLE 0 - None. ST2 - Self-tapping screws 2-28 x 6.35 [0.250] length for 2.36 [0.093] thick board or panel. Use with contact code 1 or 3. ST3 - Self-tapping screws 2-28 x 7.92 [0.312] length for 3.18 [0.125] thick board or panel. Use with contact code 1 or 3.									
STEP 6 - CABLE ADAPTER AND BLIND MATE SYSTEM 0 - None. 5 - Top Opening Hood.									
									STEP 7 - CONTACT PLATING FOR PRINTED BOARD CONNECTORS 0 - Crimp Contacts ordered separately. A1 - Gold flash over nickel on mating end and termination end. A2 - Gold flash over nickel on mating end and 5.00µ [0.00020 inch] tin-lead solder coat on termination end. C1 - 0.76µ [0.000030 inch] gold over nickel on mating end and termination end. C2 - 0.76µ [0.000030 inch] gold over nickel on mating end and 5.00µ [0.00020 inch] tin-lead solder coated termination end. D1 - 1.27µ [0.000050 inch] gold over nickel on mating end and termination end. D2 - 1.27µ [0.000050 inch] gold over nickel on mating end and 0.00020 inch [5.00µ] tin-lead solder coated termination end.

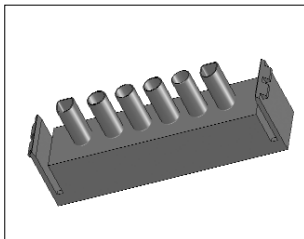


*Female only

NOTE: Once you have made a connector selection, contact Technical Sales if you would like to receive a drawing in DXF, PDF format or a 3-dimensional IGES, STEP, or SOLIDWORKS file.



SK Drawing



3-dimensional model

Unless otherwise specified, dimensional tolerances are:

- 1). ±0.03 mm [0.001inch] for male contact mating diameters.
- 2). ±0.08 mm [0.003 inch] for contact termination diameters.
- 3). ±0.13 mm [0.005 inch] for all other diameters.
- 4). ±0.38 mm [0.015 inch] for all other dimensions.

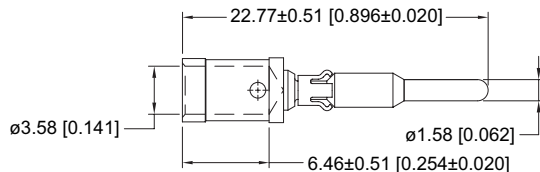
DIMENSIONS ARE IN MILLIMETERS [INCHES].
ALL DIMENSIONS ARE SUBJECT TO CHANGE.

REMOVABLE CRIMP CONTACTS SIZE 16

REMOVABLE CRIMP CONTACTS MUST BE ORDERED SEPARATELY

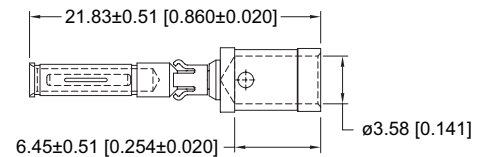
For 5.3 mm² [10 AWG] Wire

MALE CONTACT



PART NUMBER: MC110N

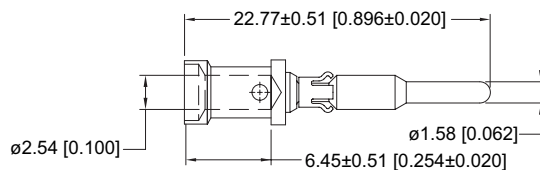
FEMALE CONTACT



PART NUMBER: FC110N2

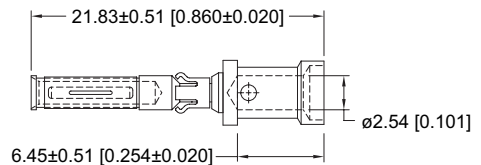
For 4.0 mm² [12 AWG] Wire

MALE CONTACT



PART NUMBER: MC112N-381.0

FEMALE CONTACT



PART NUMBER: FC112N2-381.0

MATERIALS:
Copper alloy

PLATING:
STANDARD FINISH: Gold flash over nickel plate.
OPTIONAL FINISHES: 0.76µ [0.000030] gold over nickel by adding -14 suffix onto part number. Example: FC110N2-14
 1.27µ [0.000050 inch] gold over nickel by adding -15 suffix onto part number. Example: MC112N-15-381.0

RECOMMENDED TOOLS FOR CRIMP CONTACTS

CONTACT EXTRACTION TOOL
SHOWN FOR REFERENCE ONLY



CYCLE-CONTROLLED STEP ADJUSTABLE HAND CRIMP TOOL
SHOWN FOR REFERENCE ONLY



TOOL DESCRIPTION	MC110N	FC110N2	MC112N-381.0	FC112N2-381.0
Crimp Tool	9509-6-3-0	9509-6-3-0	9501-0-0-0 with 9502-19-0-0 Positioner	9501-0-0-0 with 9502-19-0-0 Positioner
Extraction Tool	9081-4-0-0	9081-4-0-0	9081-4-0-0	9081-4-0-0

DIMENSIONS ARE IN MILLIMETERS [INCHES].
ALL DIMENSIONS ARE SUBJECT TO CHANGE.

Connector Excellence
POSITRONIC INDUSTRIES

Connector Families

Power

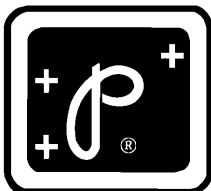
D-SUBMINIATURE

Circular

RECTANGULAR

Hermetic

THERMOCOUPLE



POSITRONIC INDUSTRIES, INC.

423 N Campbell Ave • PO Box 8247 • Springfield, MO 65801
Tel (417) 866-2322 • Fax (417) 866-4115 • Toll Free (800) 641-4054
info@connectpositronic.com • www.connectpositronic.com