



ORDERING INFORMATION - CODE NUMBERING SYSTEM

Specify Complete Connector By Selecting An Option From Step 1 Through 8

STEP	1	2	3	4	5	6	7	8	9	10
EXAMPLE	CBC	7W2	M	1	0	Z	0	0	/AA	-14

STEP 1 - BASIC SERIES
CBC Series

STEP 2 - CONNECTOR VARIANTS
Shell Size 1
5W1
Shell Size 2
7W2, 11W1
Shell Size 3
9W4, 13W3, 17W2, 21W1
Shell Size 4
*113W6, 21WA4, 25W3, *127W2
Shell Size 5
24W7, 36W4, 43W2, 47W1
Shell Size 6
46W4

STEP 3 - CONNECTOR GENDER
M - Male
S - Female - Industrial or Military Level
PosiBand Closed Entry Signal Contacts
Professional Level female open entry contacts are available and can be ordered separately, see page 73.

STEP 4 - CONTACT TERMINATION TYPE
0 - Connector ordered without contacts. Order signal, power, shielded, high voltage, air and thermocouple contacts separately. See pages 68-80 for contact part numbers.
1 - Signal contacts, 20 AWG-24 AWG [0.5mm²-0.25mm²].
11 - Signal contacts, 20 AWG-24 AWG [0.5mm²-0.25mm²] with MC/FC 4012D Power Contact.
12 - Signal contacts, 20 AWG-24 AWG [0.5mm²-0.25mm²] with MC/FC 4016D power contact.
13 - Signal contacts, 20 AWG-24 AWG [0.5mm²-0.25mm²] with MCC/FCC 4101D shielded contacts.
14 - Signal contacts, 20 AWG-24 AWG [0.5mm²-0.25mm²] with MCC/FCC 4102D shielded contacts.

***2 STEP 5 - MOUNTING STYLE**
0 - Mounting Hole, 0.120 [3.05] Ø
02 - Mounting Hole, 0.154 [3.91] Ø
F - Float Mounts, Universal
S2 - Swaged Spacer, 4-40 Threads, 0.125 [3.18] Length
S5 - Swaged Locknut, 4-40 Threads

***2 STEP 10 - SPECIAL OPTIONS**
FOR SPECIAL OPTIONS, SEE SPECIAL OPTIONS APPENDIX ON PAGE 89.

STEP 9 - ENVIRONMENTAL COMPLIANCE OPTIONS
/AA - Compliant per EU Directive 2002/95/EC (RoHS)
NOTE: If compliance to environmental legislation is not required, this step will not be used. Example: CBC7W2M10Z00

STEP 8 - SHELL OPTIONS
0 - Zinc Plated, with Chromate Seal.
*2 S - Stainless Steel, passivated.
X - Tin Plated.
Z - Tin Plated and Dimpled (male connectors only)

***2 STEP 7 - LOCKING AND POLARIZING SYSTEMS**
0 - None.
V3 - Lock Tab, connector front panel mounted.
V5 - Lock Tab, connector rear panel mounted.
VL - Lock Lever, used with Hoods only.
T - Fixed Female Jackscrews.
T2 - Fixed Female Jackscrews.
T6 - Fixed Male and Female Polarized Jackscrews.
E - Rotating Male Jackscrews.
E2 - Rotating Male Screw Locks.
E3 - Rotating Male with Internal Hex for 3/32 Hex Drives
E6 - Rotating Male and Female Polarized Jackscrews.

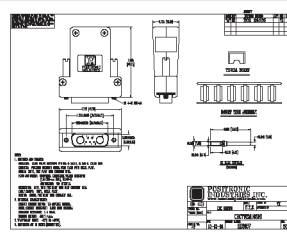
***2 STEP 6 - HOODS**
0 - None
H - Hood, Top Opening, Metal, shell sizes 2 through 5
AN - Lightweight Aluminum Hood, nickel finish.
AC - Lightweight Aluminum Hood, no finish.
*3 G - Hood, EMI/RFI, Metal, shell sizes 1 through 6
Z - Hood, Top or Side Opening, robust extended height, plastic and composite, with rotating jackscrews, shell sizes 1 through 5

NOTE: Once you have made a connector selection, contact Technical Sales if you would like to receive a drawing in DXF, PDF format or a 3-dimensional IGES, STEP, or SOLIDWORKS file.

NOTES

- *1 Connector variant 13W6 and 27W2 are currently available in female only, contact Technical Sales for availability of male connector.
- *2 For additional information on accessories listed in steps 5, 6, 7 and 10, see Accessory Catalog.
- *3 When using G hood with CBC variants, use the extended height hood. See Accessories Catalog for extended G hood options.
- *4 For stainless steel dimpled male versions, contact Technical Sales.

For crimping information and crimp tools, see Application Tools section, pages 81-89.



SK Drawing



3-dimensional model