



Positronic Industries
connectpositronic.com

PCS SERIES CONNECTOR ORDERING INFORMATION

Power
Connection
Systems

ORDERING INFORMATION - CODE NUMBERING SYSTEM

Specify Complete Connector By Selecting An Option From Step 1 Through 7

STEP	1	2	3	4	5	6	7	8	9
EXAMPLE	PLB	06	F	3	0	0	A1	/AA	

STEP 1 - BASIC SERIES

PLA - 1 Row
PLAH - 1 Row High conductivity contacts
PLB - 2 Row
PLBH - 2 Row High conductivity contacts
PLC - 3 Row
PLCH - 3 Row High conductivity contacts

STEP 2 - CONNECTOR VARIANTS

1 Row - 03, 04, 06, 08
2 Row - 06, 08, 12, 16, **20
3 Row - 09, 12, 18, 24, 30

STEP 3 - CONNECTOR GENDER

M - Male
F - Female

STEP 4 - CONTACT TERMINATION TYPE

- * 0 - Order contacts separately for cable connectors for connection systems 5, 6, 7, 8 and 9, see pages 47-53.
- * 1 - Removable contact, panel mounted connector for connection system 8. Order contacts separately, see pages 47-53.
- 2 - Solder Cup, 18 AWG [1.0mm²] max. for panel mount connector, for connection system 8. Not available as PL*H.
- 3 - Solder, Straight Printed Board Mount with 0.146 [3.71] tail extension for connection systems 1, 4 and 6.
- 32 - Solder, Straight Printed Board Mount with 0.377 [9.58] tail extension for connection system 3 and systems 1, 4 and 6.
- 4 - Solder, Right Angle (90°) Printed Board Mount with 0.146 [3.71] tail extension for connection systems 1, 2 and 5.
- 42 - Solder, Right Angle (90°) Printed Board Mount with 0.377 [9.58] tail extension for connection system 3 and systems 1, 2 and 5.
- ***62 - Press-fit, compliant Termination Right Angle (90°) Printed Board Mount, termination length 0.183 [4.65]. Must select "B3" in step 5.
- ***63 - Press-fit, compliant Termination Right Angle (90°) Printed Board Mount, termination length 0.219 [5.56]. Must select "B3" in step 5.
- * 7 - Order contacts separately for cable connectors for connection systems 5, 6, 7, 8 and 9, see pages 47-53. Terminating side of insulator has 0.165 [4.19] \varnothing c'bore for large wire sizes.
- * 8 - Removable contact, panel mounted connector for connection system 8. Order contacts separately, see pages 47-53. Terminating side of insulator has 0.165 [4.19] \varnothing c'bore for large wire sizes.
- 92 - Straight PCB Mount, Press-Fit, length 0.183 [4.65] for 0.093 inch [2.36] thick board.
- 93 - Straight PCB Mount, Press-Fit, length 0.218 [5.54] for 0.125 inch [3.18] thick board.

STEP 5 - MOUNTING STYLE

0 - None,
B - Metal Right Angle (90°) Mounting Bracket.
BN - Metal Right Angle (90°) Mounting Bracket with Push-on Fastener.
B3 - Plastic Right Angle (90°) Mounting Bracket with Cross Bar.
B3N - Plastic Right Angle (90°) Mounting Bracket with Cross Bar and Push-on Fastener.
N - Push-On Fastener For Straight Printed Board Mount Connectors
ST2 - Self-tapping steel screws 2-28 x 0.250±0.030 [6.35±0.76] length for 0.093 [2.36] thick board. *Use with contact code 62, 63, 92 or 93.*
ST3 - Self-tapping steel screws 2-28 x 0.312±0.030 [7.92±0.76] length for 0.125 [3.18] thick board. *Use with contact code 62, 63, 92 or 93.*
ST4 - Self-tapping steel screws 2-28 x 0.375±0.030 [9.53±0.76] length for 0.175 [4.45] thick board. *Use with contact code 62, 63, 92 or 93.*
SS2 - Self-tapping stainless steel screws 2-28 x 0.250±0.030 [6.35±0.76] length for 0.093 [2.36] thick board. *Use with contact code 62, 63, 92 or 93.*
SS3 - Self-tapping stainless steel screws 2-28 x 0.312±0.030 [7.92±0.76] length for 0.125 [3.18] thick board. *Use with contact code 62, 63, 92 or 93.*
SS4 - Self-tapping stainless steel screws 2-28 x 0.375±0.030 [9.53±0.76] length for 0.175 [4.45] thick board. *Use with contact code 62, 63, 92 or 93.*

STEP 7 - CONTACT PLATING FOR PRINTED BOARD CONNECTORS

0 - Crimp Contacts ordered separately, see pages 47-53.
A1 - Gold flash over nickel on mating end and termination end.
A2 - Gold flash over nickel on mating end and 0.00020 inch [5.00 μ] tin-lead solder coat on termination end. Not available with code 62, 63, 92 or 93 in step 4.
C1 - 0.000030 inch [0.76 μ] gold over nickel on mating end and termination end.
C2 - 0.000030 inch [0.76 μ] gold over nickel on mating end and 0.00020 inch [5.00 μ] tin-lead solder coated termination end. Not available with code 62, 63, 92 or 93 in step 4.
D1 - 0.000050 inch [1.27 μ] gold over nickel on mating end and termination end.
D2 - 0.000050 inch [1.27 μ] gold over nickel on mating end and 0.00020 inch [5.00 μ] tin-lead solder coated termination end. Not available with code 62, 63, 92 or 93 in step 4.

STEP 6 - HOODS AND PANEL MOUNT

0 - None.
5 - Top Opening Hood.
6 - Panel Mount, quick release.
81 - Panel Mount, fixed for 0.040 [1.02] thick panel.
82 - Panel Mount, fixed for 0.060 [1.52] thick panel.
83 - Panel Mount, fixed for 0.090 [2.29] thick panel.
11 - Blind Mating System for 0.040 [1.02] thick panel.
12 - Blind Mating System for 0.060 [1.52] thick panel.
13 - Blind Mating System for 0.090 [2.29] thick panel.
14 - Blind Mating System for 0.120 [3.05] thick panel.

STEP 8 - ENVIRONMENTAL COMPLIANCE OPTIONS

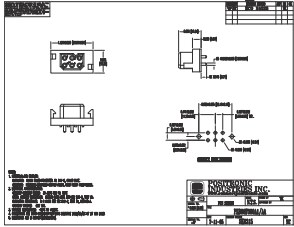
/AA - Compliant per EU Directive 2002/95/EC (RoHS)

NOTE: If compliance to environmental legislation is not required, this step will not be used.
Example: PLB06F300A1

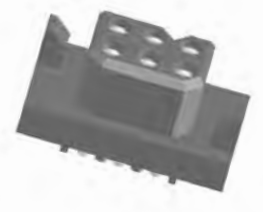
STEP 9 - SPECIAL OPTIONS

Sequential Mating Systems refer to page 25.
CONTACT TECHNICAL SALES FOR SPECIAL OPTIONS

NOTE: Once you have made a connector selection, contact Technical Sales if you would like to receive a drawing in DXF, PDF format or a 3-dimensional IGES file.



SK Drawing



3-dimensional model

26 DIMENSIONS ARE IN INCHES [MILLIMETERS].
ALL DIMENSIONS ARE SUBJECT TO CHANGE.

* For high conductivity contact connectors, order **PL*H** connectors and *C112N(2)S contacts
** PLB20 variant available with code 2, 3, 32, 4, 42, 92, and 93 only in Step 4.
*** Mounting screws are ordered separately. See page 63 for part numbers.



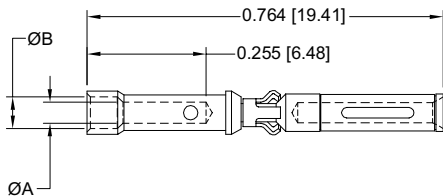
REMOVABLE CRIMP SIGNAL CONTACT

FOR USE WITH PCS MIXED DENSITY SERIES CONNECTORS

CONTACTS MUST BE ORDERED SEPARATELY

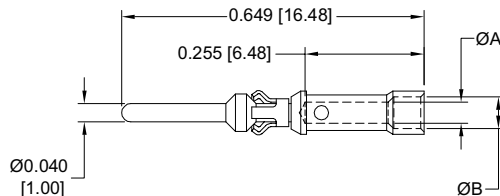
SIZE 20

FEMALE CONTACT



PART NUMBER	WIRE SIZE AWG/[mm ²]	ØA	ØB
FC720N2	20 / 22 / 24 [0.5 / 0.3 / 0.25]	0.045 [1.14]	0.068 [1.73]

MALE CONTACT



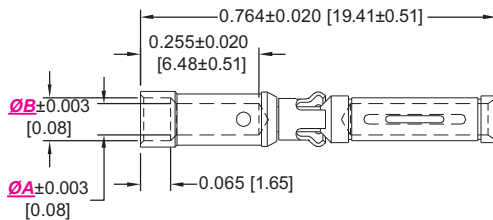
PART NUMBER	WIRE SIZE AWG/[mm ²]	ØA	ØB
MC720N3	20 / 22 / 24 [0.5 / 0.3 / 0.25]	0.045 [1.14]	0.068 [1.73]

For information regarding crimp tool and crimping tool techniques, see Application Tools section, pages 54-61.

REMOVABLE CRIMP CONTACT FOR USE WITH PCS SERIES CONNECTORS CONTACTS MUST BE ORDERED SEPARATELY

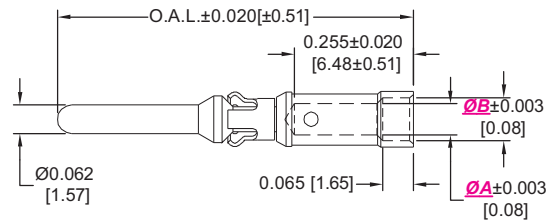
See page 9 for current ratings.

FEMALE CONTACT "CLOSED ENTRY" DESIGN



SIZE 16

MALE CONTACT



PART NUMBERS	WIRE SIZE AWG/[mm ²]	ØA	ØB
FC112N2	12 [4.0]	0.098 [2.49]	N/A
FC112N2S	12 [4.0]	0.098 [2.49]	N/A
FC114N2	14-16 [2.5-1.5]	0.081 [2.06]	0.105 [2.67]
FC116N2	16-18 [1.5-1.0]	0.067 [1.70]	0.093 [2.36]
FC120N2	20-22-24 [0.5-0.3-0.25]	0.045 [1.14]	0.065 [1.65]

"S" in part number indicates high conductivity material.
Compatible with PL*H PCB mount connectors. See ordering information.

PART NUMBERS	WIRE SIZE AWG/[mm ²]	ØA	ØB	OAL
MC112N	12 [4.0]	0.098 [2.49]	N/A	0.764 [19.41]
MC112NS	12 [4.0]	0.098 [2.49]	N/A	0.764 [19.41]
*MC112N-133.0	12 [4.0]	0.098 [2.49]	N/A	0.684 [17.37]
*MC112N-133.1	12 [4.0]	0.098 [2.49]	N/A	0.724 [18.39]
*MC112N-133.2	12 [4.0]	0.098 [2.49]	N/A	0.744 [18.90]
*MC112N-133.3	12 [4.0]	0.098 [2.49]	N/A	0.804 [20.42]
MC114N	14-16 [2.5-1.5]	0.081 [2.06]	0.105 [2.67]	0.764 [19.41]
MC116N	16-18 [1.5-1.0]	0.067 [1.70]	0.093 [2.36]	0.764 [19.41]
*MC116N-133.0	16-18 [1.5-1.0]	0.067 [1.70]	0.093 [2.36]	0.684 [17.37]
*MC116N-133.1	16-18 [1.5-1.0]	0.067 [1.70]	0.093 [2.36]	0.724 [18.39]
*MC116N-133.2	16-18 [1.5-1.0]	0.067 [1.70]	0.093 [2.36]	0.744 [18.90]
*MC116N-133.3	16-18 [1.5-1.0]	0.067 [1.70]	0.093 [2.36]	0.804 [20.42]
MC120N	20-22-24 [0.5-0.3-0.25]	0.045 [1.14]	0.065 [1.65]	0.764 [19.41]

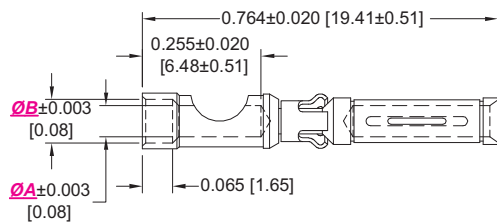
* indicates Sequential mate contacts, see page 25 for more information regarding Sequential Mating System.

REMOVABLE CONTACT

See page 9 for current ratings.

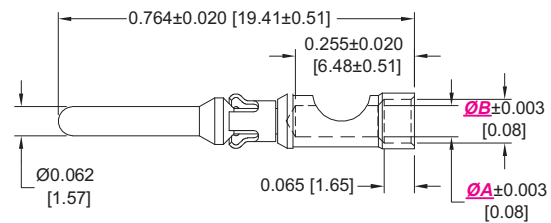
REMOVABLE SOLDER CUP CONTACT FOR USE WITH PCS SERIES CONNECTORS CONTACTS MUST BE ORDERED SEPARATELY

FEMALE CONTACT "CLOSED ENTRY" DESIGN



SIZE 16

MALE CONTACT



PART NUMBERS	WIRE SIZE AWG/[mm ²]	ØA	ØB
FS112N2	12 [4.0]	0.098 [2.49]	N/A
NEW FS112N2S	12 [4.0]	0.098 [2.49]	N/A
FS114N2	14 [2.5]	0.081 [2.06]	0.105 [2.67]
FS116N2	16 [1.5]	0.067 [1.70]	0.093 [2.36]
FS120N2	20 [0.5]	0.045 [1.14]	0.065 [1.65]

"S" in part number indicates high conductivity material.
Compatible with PL*H PCB mount connectors. See ordering information.

PART NUMBERS	WIRE SIZE AWG/[mm ²]	ØA	ØB
MS112N	12 [4.0]	0.098 [2.49]	N/A
NEW MS112NS	12 [4.0]	0.098 [2.49]	N/A
MS114N	14 [2.5]	0.081 [2.06]	0.105 [2.67]
MS116N	16 [1.5]	0.067 [1.70]	0.093 [2.36]
MS120N	20 [0.5]	0.045 [1.14]	0.065 [1.65]

For information regarding crimp tool and crimping tool techniques, see Application Tools section, pages 54-61.



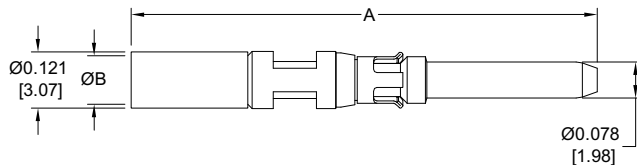
Positronic Industries
connectpositronic.com

REMOVABLE SHIELDED AND CRIMP CONTACT SIZE 16 AND SIZE 12

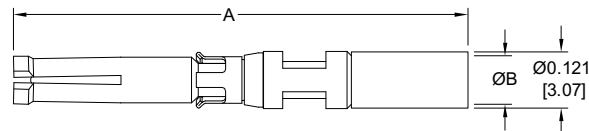
Power
Connection
Systems

REMOVABLE CRIMP SHIELDED CONTACT FOR USE WITH PCS SERIES CONNECTORS CONTACTS MUST BE ORDERED SEPARATELY SIZE 16

MALE CONTACT



FEMALE CONTACT



PART NUMBERS	CABLE SIZE	CHARACT. IMPED.	A	ØB
MCS126N	RG 178 B/U	50 ohms	0.993 [25.22]	0.045 [1.14]
	RG 196 B/U	50 ohms		
MCS226N	RG 179 B/U	75 ohms	1.022 [25.96]	0.070 [1.78]
	RG 316 /U	50 ohms		

PART NUMBERS	CABLE SIZE	CHARACT. IMPED.	A	ØB
FCS126N2	RG 178 B/U	50 ohms	0.967 [24.56]	0.045 [1.14]
	RG 196 B/U	50 ohms		
FCS226N2	RG 179 B/U	75 ohms	1.022 [25.96]	0.070 [1.78]
	RG 316 /U	50 ohms		

Note: the above charts were placed under the wrong drawings in the printed catalog. this has now been fixed with this supplement.

POSITRONIC INDUSTRIES

Connector Excellence[®]

Connector Families

Power

D-SUBMINIATURE

Circular

RECTANGULAR

Hermetic

THERMOCOUPLE

POSITRONIC INDUSTRIES, INC.

423 N Campbell Avenue • PO Box 8247 • Springfield, MO 65801
Tel (417) 866-2322 • Fax (417) 866-4115 • Toll Free (800) 641-4054
info@connectpositronic.com

POSITRONIC INDUSTRIES, S.A.S.

Zone Industrielle d'Engachies • 46 Route d'Engachies
France 32020 Auch Cedex 9
Telephone 33 5 62 63 44 91 • Fax 33 5 62 63 51 17
contact@connectpositronic.com

POSITRONIC ASIA PTE LTD.

3014A Ubi Road 1 #07-01 • Singapore 408703
Telephone (65) 6842 1419 • Fax (65) 6842 1421
singapore@connectpositronic.com



POSITRONIC[®]
GLOBAL *Connector* SOLUTIONS

Quality Solutions

Reliable Service