



Positronic Industries
connectpositronic.com




PCS MIXED DENSITY CONNECTOR ORDERING INFORMATION

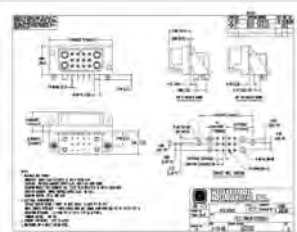
Power
Connection
Systems

ORDERING INFORMATION - CODE NUMBERING SYSTEM

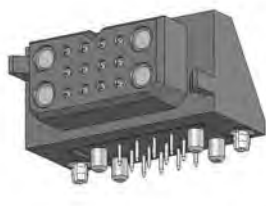
Specify Complete Connector By Selecting An Option From Step 1 Through 7

STEP	1	2	3	4	5	6	7	8	9
EXAMPLE	PLC	16W4	F	4	B3N	0	A1	/AA	
STEP 1 - BASIC SERIES PLB - 2 Row PLBH - 2 Row High conductivity contacts PLC - 3 Row PLCH - 3 Row High conductivity contacts									STEP 9 - SPECIAL OPTIONS CONTACT TECHNICAL SALES FOR SPECIAL OPTIONS
STEP 2 - CONNECTOR VARIANTS 2 Row - 10W2 3 Row - 16W4									STEP 8 - ENVIRONMENTAL COMPLIANCE OPTIONS /AA - Compliant per EU Directive 2002/95/EC (RoHS)  NOTE: If compliance to environmental legislation is not required, this step will not be used. Example: PLC16W4F4B3N0A1
STEP 3 - CONNECTOR GENDER M - Male F - Female									
STEP 4 - CONTACT TERMINATION TYPE 0 - Removable contact, cable connector. Order contacts separately, see pages 47-53. 1 - Removable contact, panel mounted connector. Order contacts separately, see pages 47-53. 3 - Solder, Straight Printed Board Mount with 0.146 [3.71] tail extension. 4 - Solder, Right Angle (90°) Printed Board Mount with 0.146 [3.71] tail extension. 93 - Straight PCB Mount, Press-Fit, length 0.218 [5.54] for 0.125 inch [3.18] thick board.									STEP 7 - CONTACT PLATING FOR PRINTED BOARD CONNECTORS 0 - Crimp Contacts ordered separately, see page 47-53. A1 - Gold flash over nickel on mating end and termination end. A2 - Gold flash over nickel on mating end and 0.00020 inch [5.00μ] tin-lead solder coat on termination end. Not available with code 93 in step 4. C1 - 0.000030 inch [0.76μ] gold over nickel on mating end and termination end. C2 - 0.000030 inch [0.76μ] gold over nickel on mating end and 0.00020 inch [5.00μ] tin-lead solder coated termination end. Not available with code 93 in step 4. D1 - 0.000050 inch [1.27μ] gold over nickel on mating end and termination end. D2 - 0.000050 inch [1.27μ] gold over nickel on mating end and 0.00020 inch [5.00μ] tin-lead solder coated termination end. Not available with code 93 in step 4.
STEP 5 - MOUNTING STYLE 0 - None. B - Metal Right Angle (90°) Mounting Bracket. BN - Metal Right Angle (90°) Mounting Bracket with Push-on Fastener. B3 - Plastic Right Angle (90°) Mounting Bracket with Cross Bar. B3N - Plastic Right Angle (90°) Mounting Bracket with Cross Bar and Push-on Fastener. N - Push-On Fastener For Straight Printed Board Mount Connectors ST2 - Self-tapping steel screws 2-28 x 0.250+0.030 [6.35+0.76] length for 0.093 [2.36] thick board. <i>Use with contact code 93.</i> ST3 - Self-tapping steel screws 2-28 x 0.312+0.030 [7.92+0.76] length for 0.125 [3.18] thick board. <i>Use with contact code 93.</i> ST4 - Self-tapping steel screws 2-28 x 0.375+0.030 [9.53+0.76] length for 0.175 [4.45] thick board. <i>Use with contact code 93.</i> SS2 - Self-tapping stainless steel screws 2-28 x 0.250+0.030 [6.35+0.76] length for 0.093 [2.36] thick board. <i>Use with contact code 93.</i> SS3 - Self-tapping stainless steel screws 2-28 x 0.312+0.030 [7.92+0.76] length for 0.125 [3.18] thick board. <i>Use with contact code 93.</i> SS4 - Self-tapping stainless steel screws 2-28 x 0.375+0.030 [9.53+0.76] length for 0.175 [4.45] thick board. <i>Use with contact code 93.</i>									STEP 6 - HOODS AND PANEL MOUNT 0 - None. 51 - Top Opening Hood. 6 - Panel Mount, quick release. 81 - Panel Mount, fixed for 0.040 [1.02] thick panel. 82 - Panel Mount, fixed for 0.060 [1.52] thick panel. 83 - Panel Mount, fixed for 0.090 [2.29] thick panel. 11 - Blind Mating System for 0.040 [1.02] thick panel. 12 - Blind Mating System for 0.060 [1.52] thick panel. 13 - Blind Mating System for 0.090 [2.29] thick panel. 14 - Blind Mating System for 0.120 [3.05] thick panel.

NOTE: Once you have made a connector selection, contact Technical Sales if you would like to receive a drawing in DXF, PDF format or a 3-dimensional IGES, STEP, or SOLIDWORKS file.



SK Drawing



3-dimensional model



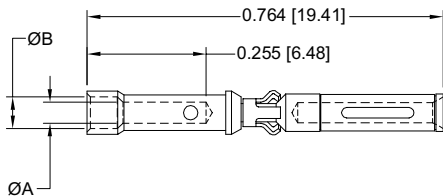
REMOVABLE CRIMP SIGNAL CONTACT

FOR USE WITH PCS MIXED DENSITY SERIES CONNECTORS

CONTACTS MUST BE ORDERED SEPARATELY

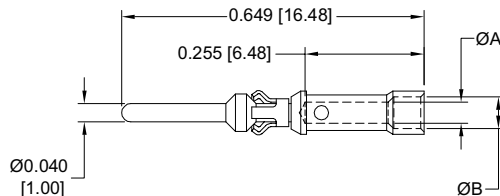
SIZE 20

FEMALE CONTACT



PART NUMBER	WIRE SIZE AWG/[mm ²]	ØA	ØB
FC720N2	20 / 22 / 24 [0.5 / 0.3 / 0.25]	0.045 [1.14]	0.068 [1.73]

MALE CONTACT



PART NUMBER	WIRE SIZE AWG/[mm ²]	ØA	ØB
MC720N3	20 / 22 / 24 [0.5 / 0.3 / 0.25]	0.045 [1.14]	0.068 [1.73]

For information regarding crimp tool and crimping tool techniques, see Application Tools section, pages 54-61.

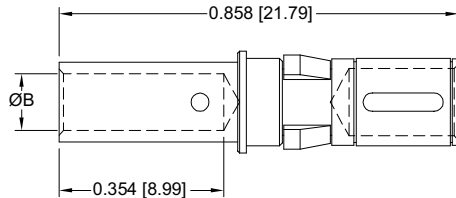


REMOVABLE CRIMP CONTACT

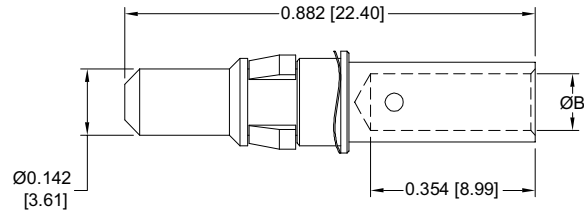
FOR USE WITH PCS MIXED DENSITY SERIES CONNECTORS
CONTACTS MUST BE ORDERED SEPARATELY

SIZE 8

* FEMALE CONTACT CLOSED ENTRY, L.S.A.



MALE CONTACT



PART NUMBER	CURRENT RATING	WIRE SIZE AWG/[mm ²]	ØB
FC4008D	See Temp. Rise Curve, page 40.	8 / [10.0]	0.181 [4.60]
FC4008DS	See Temp. Rise Curve, page 40.	8 / [10.0]	0.181 [4.60]
FC4010D	30 amps	10 / [6.0]	0.122 [3.10]
FC4012D	20 amps	12 / [4.0]	0.101 [2.57]
FC4016D	10 amps	16 / [1.5]	0.067 [1.70]

“S” in part number indicates high conductivity material.

Compatible with PL*H PCB mount connectors. See ordering information.

PART NUMBER	CURRENT RATING	WIRE SIZE AWG/[mm ²]	ØB
MC4008D	See Temp. Rise Curve, page 40.	8 / [10.0]	0.181 [4.60]
MC4008DS	See Temp. Rise Curve, page 40.	8 / [10.0]	0.181 [4.60]
MC4010D	30 amps	10 / [6.0]	0.122 [3.10]
MC4012D	20 amps	12 / [4.0]	0.101 [2.57]
MC4016D	10 amps	16 / [1.5]	0.067 [1.70]

*NOTE: Female contacts feature Large Surface Area (L.S.A.) closed entry contact design which provides maximum mating surfaces between male and female contact and reduced contact resistance during operation.

For information regarding crimp tool and crimping tool techniques, see Application Tools section, pages 54-61.

DIMENSIONS ARE IN INCHES [MILLIMETERS].
ALL DIMENSIONS ARE SUBJECT TO CHANGE.

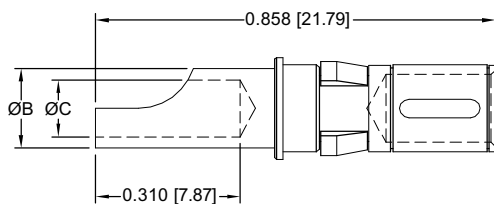


REMOVABLE HIGH VOLTAGE CONTACT SIZE 8

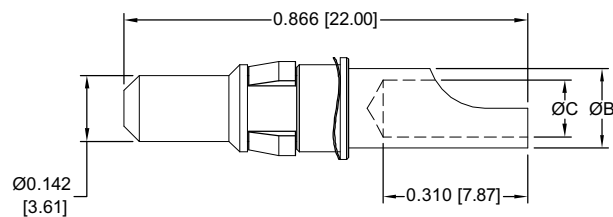


REMOVABLE SOLDER CUP CONTACT FOR USE WITH PCS MIXED DENSITY SERIES CONNECTORS CONTACTS MUST BE ORDERED SEPARATELY SIZE 8

*** FEMALE CONTACT**
CLOSED ENTRY, L.S.A.



MALE CONTACT



PART NUMBER	CURRENT RATING	WIRE SIZE AWG/[mm ²]	ØB	ØC
FS4008D	40 amps	8 / [10.0]	0.219 [5.56]	0.188 [4.78]
FS4012D	20 amps	12 / [4.0]	0.143 [3.63]	0.112 [2.84]
FS4016D	10 amps	16 / [1.5]	0.100 [2.54]	0.069 [1.75]

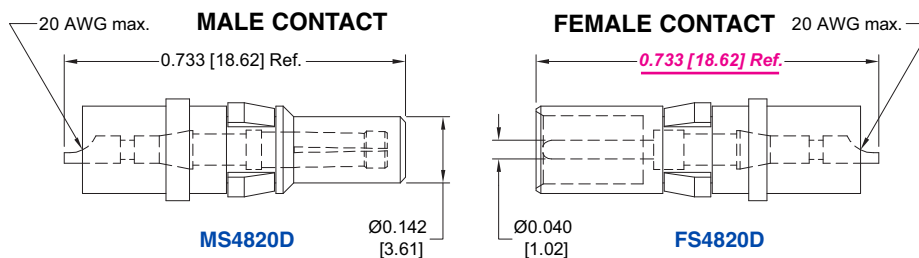
PART NUMBER	CURRENT RATING	WIRE SIZE AWG/[mm ²]	ØB	ØC
MS4008D	40 amps	8 / [10.0]	0.219 [5.56]	0.188 [4.78]
MS4012D	20 amps	12 / [4.0]	0.143 [3.63]	0.112 [2.84]
MS4016D	10 amps	16 / [1.5]	0.100 [2.54]	0.069 [1.75]

***NOTE:** Female contacts feature Large Surface Area (L.S.A.) closed entry contact design which provides maximum mating surfaces between male and female contact and reduced contact resistance during operation.

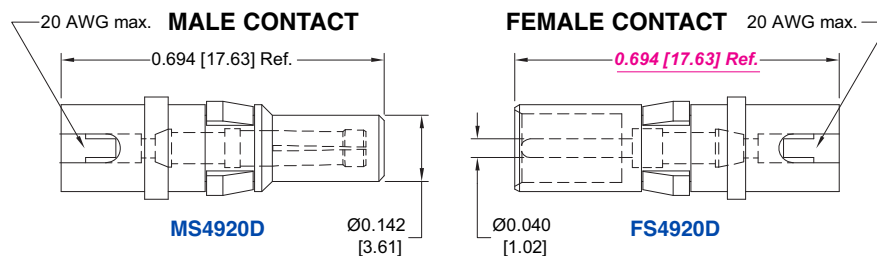


REMOVABLE HIGH VOLTAGE CONTACT FOR USE WITH PCS MIXED DENSITY SERIES CONNECTORS CONTACTS MUST BE ORDERED SEPARATELY SIZE 8

STRAIGHT SOLDER WIRE TERMINATION



RIGHT ANGLE (90°) SOLDER WIRE TERMINATION

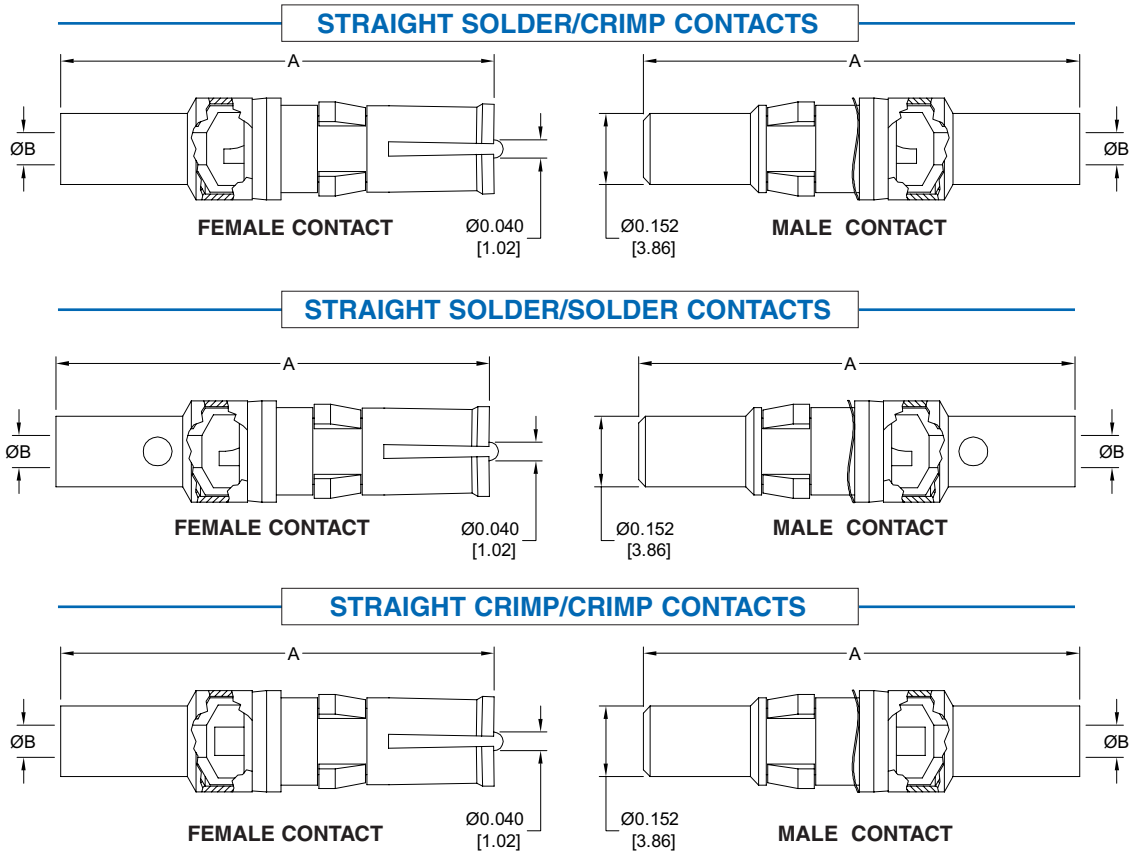


For information regarding crimp tool and crimping tool techniques, see Application Tools section, pages 54-61.

REMOVABLE CONTACT



REMOVABLE SHIELDED CONTACT
FOR USE WITH PCS MIXED DENSITY SERIES CONNECTORS
CONTACTS MUST BE ORDERED SEPARATELY
SIZE 8



REMOVABLE CONTACT

TYPE OF CONTACT	PART NUMBER		A	ØB	RG CABLE NUMBER
	MALE	FEMALE			
SOLDER/CRIMP	MC4101D	FC4101D	0.929 [23.60]	0.040 [1.02]	178 B/U 196 B/U
SOLDER/CRIMP	MC4102D	FC4102D	0.929 [23.60]	0.067 [1.70]	179 B/U 316 B/U
SOLDER/CRIMP	MC4103D	FC4103D	1.037 [26.34]	0.108 [2.74]	180 B/U
SOLDER/CRIMP	MC4104D	FC4104D	1.037 [26.34]	0.120 [3.05]	58 B/U
SOLDER/SOLDER	MS4101D	FS4101D	0.929 [23.60]	0.040 [1.02]	178 B/U 196 B/U
SOLDER/SOLDER	MS4102D	FS4102D	0.929 [23.60]	0.067 [1.70]	179 B/U 316 /U
SOLDER/SOLDER	MS4103D	FS4103D	1.037 [26.34]	0.108 [2.74]	180 B/U
SOLDER/SOLDER	MS4104D	FS4104D	1.037 [26.34]	0.120 [3.05]	58 B/U
CRIMP/CRIMP	MCC4101D	FCC4101D	0.929 [23.60]	0.040 [1.02]	178 B/U 196 B/U
CRIMP/CRIMP	MCC4102D	FCC4102D	0.929 [23.60]	0.067 [1.70]	179 B/U 316 /U
CRIMP/CRIMP	MCC4103D	FCC4103D	1.037 [26.34]	0.108 [2.74]	180 B/U
CRIMP/CRIMP	MCC4104D	FCC4104D	1.037 [26.34]	0.120 [3.05]	58 B/U

Two-step crimping action for signal and shielding conductors.

For information regarding crimp tool and crimping tool techniques, see Application Tools section, pages 54-61.

POSITRONIC INDUSTRIES

Connector Excellence[®]

Connector Families

Power

D-SUBMINIATURE

Circular

RECTANGULAR

Hermetic

THERMOCOUPLE

POSITRONIC INDUSTRIES, INC.

423 N Campbell Avenue • PO Box 8247 • Springfield, MO 65801
Tel (417) 866-2322 • Fax (417) 866-4115 • Toll Free (800) 641-4054
info@connectpositronic.com

POSITRONIC INDUSTRIES, S.A.S.

Zone Industrielle d'Engachies • 46 Route d'Engachies
France 32020 Auch Cedex 9
Telephone 33 5 62 63 44 91 • Fax 33 5 62 63 51 17
contact@connectpositronic.com

POSITRONIC ASIA PTE LTD.

3014A Ubi Road 1 #07-01 • Singapore 408703
Telephone (65) 6842 1419 • Fax (65) 6842 1421
singapore@connectpositronic.com



POSITRONIC[®]
GLOBAL *Connector* SOLUTIONS

Quality Solutions

Reliable Service