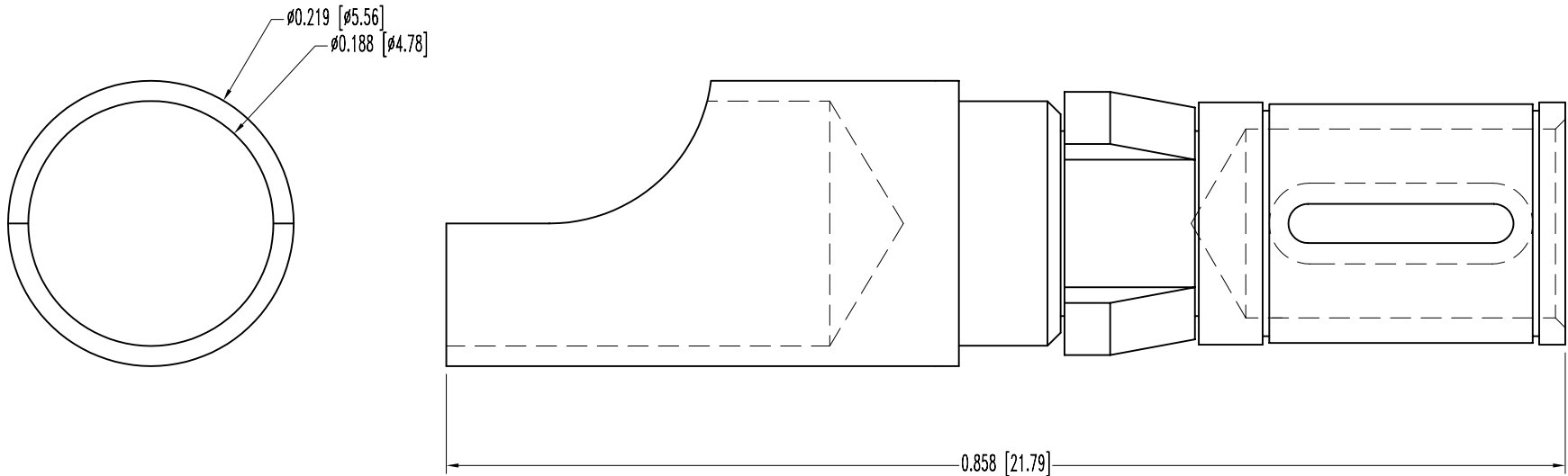


SK6822

POSITRONIC INDUSTRIES BELIEVES THE DATA ON THIS DRAWING TO BE RELIABLE. SINCE THE TECHNICAL INFORMATION IS GIVEN FREE OF CHARGE, THE USER EMPLOYS SUCH INFORMATION AT HIS OWN DISCRETION AND RISK. POSITRONIC INDUSTRIES ASSUMES NO RESPONSIBILITY FOR RESULTS OBTAINED OR DAMAGES INCURRED FROM USE OF SUCH INFORMATION IN WHOLE OR IN PART.

DATE	REV	REVISION RECORD	APP	DR	CK
12-15-05	NC	ECO 25192		ME	



NOTES:

1. MATERIAL AND FINISH: HIGH CONDUCTIVITY COPPER ALLOY, GOLD FLASH OVER NICKEL OVER COPPER.
2. ELECTRICAL CHARACTERISTICS:  
 CONTACT CURRENT RATING: 40 AMPERES NOMINAL.  
 INITIAL CONTACT RESISTANCE: 0.005 OHMS MAXIMUM.
3. CONTACTS ARE ROHS COMPLIANT PER ROHS DIRECTIVE 2002/95/EC OF 27 JAN 2003.
4. DIMENSIONS ARE IN INCHES [MILLIMETERS].

 <b>POSITRONIC INDUSTRIES INC.</b> www.connectpositronic.com		SCALE		DRAWN BY	
		N.T.S.		M. ENEA	
DECIMAL TOL. ± 0.015 [0.38]		CBD SERIES		APPROVED BY	
		TITLE FS4008D/AA			
ANGULAR TOL. ± 5°		DATE 12-15-05		DRAWING NUMBER SK6822	
				REV. NC	