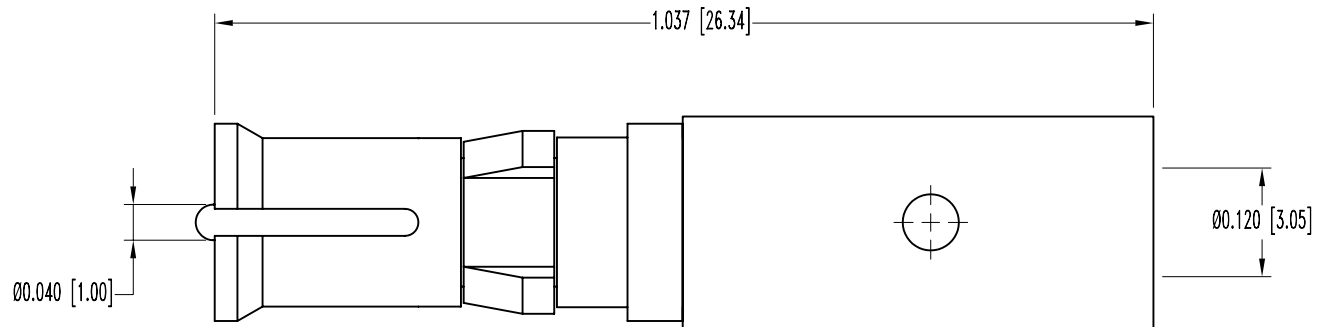


SK7767

POSITRONIC INDUSTRIES BELIEVES THE DATA ON THIS DRAWING TO BE RELIABLE. SINCE THE TECHNICAL INFORMATION IS GIVEN FREE OF CHARGE, THE USER EMPLOYS SUCH INFORMATION AT HIS OWN DISCRETION AND RISK. POSITRONIC INDUSTRIES ASSUMES NO RESPONSIBILITY FOR RESULTS OBTAINED OR DAMAGES INCURRED FROM USE OF SUCH INFORMATION IN WHOLE OR IN PART.

DATE	REV	REVISION RECORD	APP	DR	CK
7-12-06	NC	ECO 26353		YK	



NOTES:

1. MATERIALS AND FINISHES:

CONTACT: COPPER ALLOY WITH PTFE TEFLON INSULATOR.
 PLATING: SIGNAL CONTACT-0.000030 [0.75μ] GOLD OVER NICKEL.
 CONTACT BODY-GOLD FLASH OVER NICKEL.

2. ELECTRICAL CHARACTERISTICS:

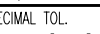
INITIAL CONTACT RESISTANCE: 0.008 OHMS MAXIMUM.
 NOMINAL IMPEDANCE: 50 OHMS.
 INSERTION LOSS: -0.46 dB AT 1 GHz.
 -1.5 dB AT 2 GHz.

VSWR: 1.15 AVERAGE AT 1 GHz.
 1.56 AVERAGE AT 2 GHz.

PROOF VOLTAGE: 1000 V r.m.s.

3. CONTACTS ARE ROHS COMPLIANT PER ROHS DIRECTIVE 2002/95/EC OF 27 JAN 2003.

4. DIMENSIONS ARE IN INCHES [MILLIMETERS].

		POSITRONIC INDUSTRIES INC. www.connectpositronic.com	
		SCALE N.T.S.	DRAWN BY YK
DECIMAL TOL. ± 0.015 [0.38]	TITLE CBD SERIES	APPROVED BY	
	FS4104D/AA		
ANGULAR TOL. ± 5°	DATE 7-12-06	DRAWING NUMBER SK7767	REV. NC