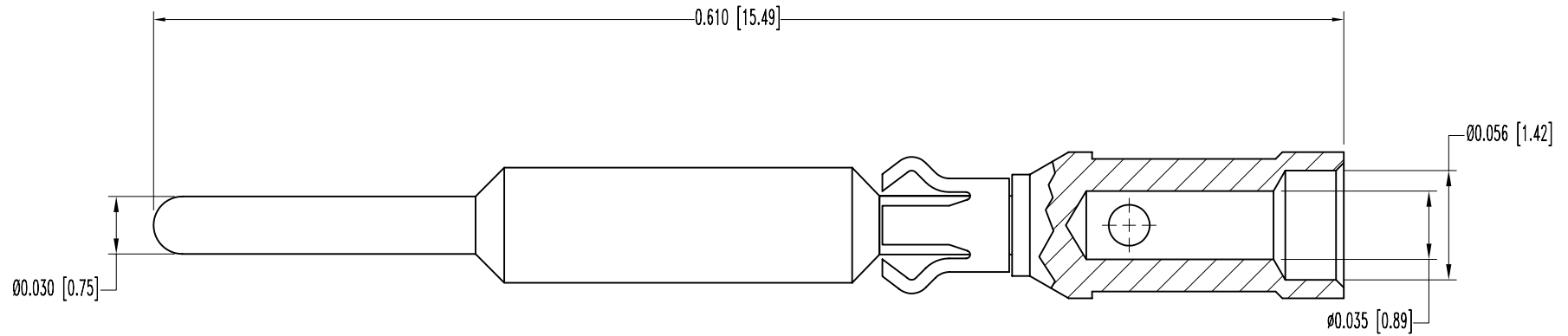


SK7031


POSITRONIC INDUSTRIES BELIEVES THE DATA ON THIS DRAWING TO BE RELIABLE. SINCE THE TECHNICAL INFORMATION IS GIVEN FREE OF CHARGE, THE USER EMPLOYS SUCH INFORMATION AT HIS OWN DISCRETION AND RISK. POSITRONIC INDUSTRIES ASSUMES NO RESPONSIBILITY FOR RESULTS OBTAINED OR DAMAGES INCURRED FROM USE OF SUCH INFORMATION IN WHOLE OR IN PART.

| DATE    | REV | REVISION RECORD | APP | DR | CK |
|---------|-----|-----------------|-----|----|----|
| 2-10-06 | NC  | ECO 25484       |     | YK |    |
|         |     |                 |     |    |    |
|         |     |                 |     |    |    |



NOTES:

- MATERIAL AND FINISHES:  
CONTACT: COPPER ALLOY, 0.000015 [0.38μ] GOLD OVER NICKEL PLATE.  
RETAINING CLIP: BERYLLIUM COPPER, GOLD FLASH OVER NICKEL PLATE.
- CONTACTS ARE ROHS COMPLIANT PER ROHS DIRECTIVE 2202/95/EC OF 27 JAN 2003.
- DIMENSIONS ARE IN INCHES [MILLIMETERS].

|   |  |                    |  |                          |  |
|---|--|--------------------|--|--------------------------|--|
|  <b>POSITRONIC INDUSTRIES INC.</b><br><a href="http://www.connectpositronic.com">www.connectpositronic.com</a> |  | SCALE              |  | DRAWN BY                 |  |
|  DECIMAL TOL.<br>±0.015 [0.38]   |  | SGM C SERIES       |  | N.T.S.                   |  |
|  ANGULAR TOL.<br>±5°   |  | DATE<br>2-10-06    |  | DRAWING NUMBER<br>SK7031 |  |
|   |  | TITLE<br>MC422N/AA |  | APPROVED BY<br>YK        |  |
|   |  | REV.<br>NC         |  |                          |  |