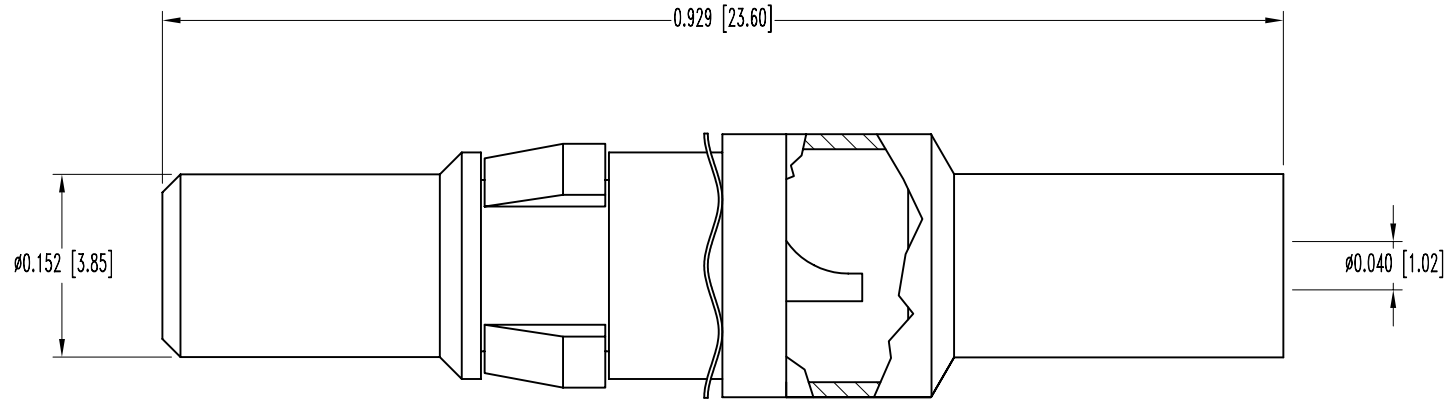


SK7237


POSITRONIC INDUSTRIES BELIEVES THE DATA ON THIS DRAWING TO BE RELIABLE. SINCE THE TECHNICAL INFORMATION IS GIVEN FREE OF CHARGE, THE USER EMPLOYS SUCH INFORMATION AT HIS OWN DISCRETION AND RISK. POSITRONIC INDUSTRIES ASSUMES NO RESPONSIBILITY FOR RESULTS OBTAINED OR DAMAGES INCURRED FROM USE OF SUCH INFORMATION IN WHOLE OR IN PART.

DATE	REV	REVISION RECORD	APP	DR	CK
4-3-06	NC	ECO 25753		YK	



NOTES:

- MATERIAL: COPPER ALLOY WITH PTFE TEFLON INSULATOR.
- FINISH: SIGNAL CONTACT-0.000030 [0.75 $\mu$ ] GOLD OVER NICKEL. CONTACT BODY-GOLD FLASH OVER NICKEL.
- ELECTRICAL CHARACTERISTICS:  
 INITIAL CONTACT RESISTANCE: 0.008 OHMS MAXIMUM.  
 NOMINAL IMPEDANCE: 50 OHMS.  
 INSERTION LOSS: -0.46dB AT 1 GHz  
 -1.5 dB AT 2 GHz  
 VSWR: 1.15 AVERAGE AT 1 GHz  
 1.56 AVERAGE AT 2 GHz  
 PROOF VOLTAGE: 1000 V r.m.s.  
 TEMPERATURE RANGE: -55°C TO +125°C.
- CONTACTS ARE ROHS COMPLIANT PER ROHS DIRECTIVE 2002/95/EC OF 27 JAN 2003.
- DIMENSIONS ARE IN INCHES [MILLIMETERS].

 <b>POSITRONIC INDUSTRIES INC.</b> www.connectpositronic.com		SCALE	DRAWN BY
		N.T.S.	YK
DECIMAL TOL.	CBD SERIES	APPROVED BY	
$\pm 0.015$ [0.38]	TITLE	MC4101D/AA	
ANGULAR TOL.	DATE	DRAWING NUMBER	REV.
$\pm 5^\circ$	4-3-06	SK7237	NC