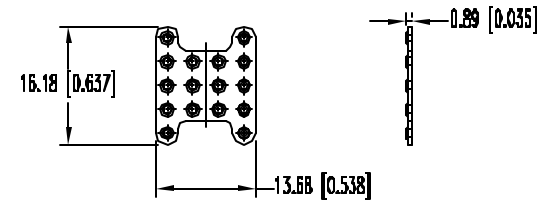
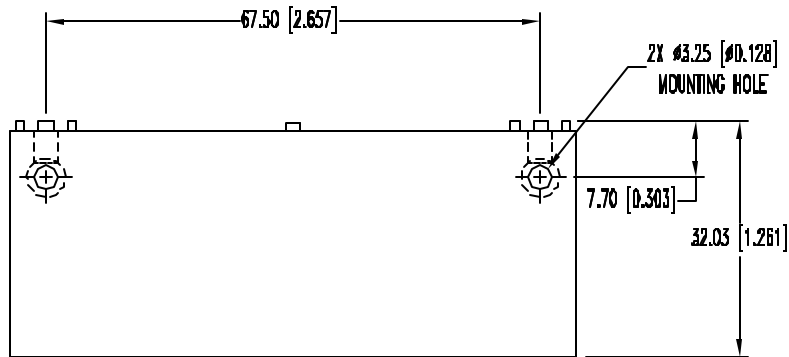


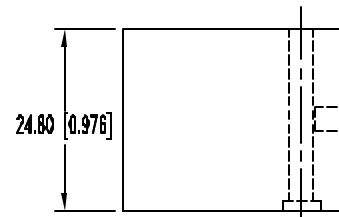
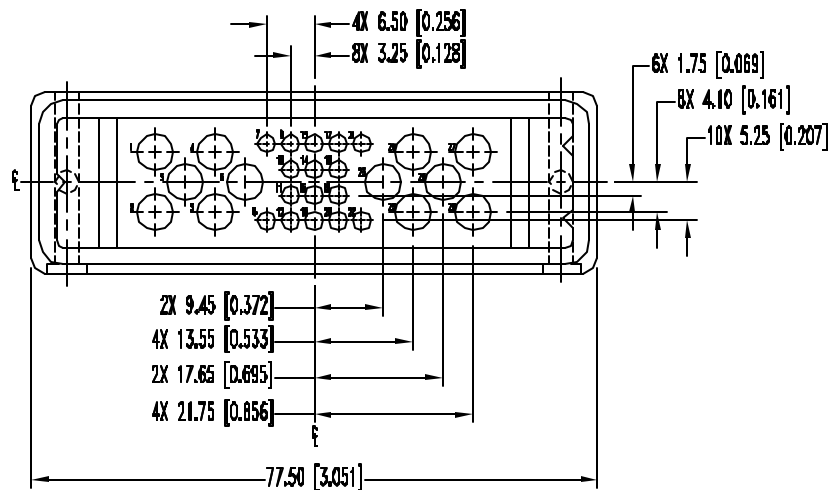
POSITRONIC INDUSTRIES BELIEVES THE DATA ON THIS DRAWING TO BE RELIABLE, SINCE THE TECHNICAL INFORMATION IS GIVEN FREE OF CHARGE, THE USER EMPLOYEES SUCH INFORMATION AT HIS OWN DISCRETION AND RISK. POSITRONIC INDUSTRIES ASSUMES NO RESPONSIBILITY FOR RESULTS OBTAINED OR DAMAGES INCURRED FROM USE OF SUCH INFORMATION IN WHOLE OR IN PART.

SK3076

DATE	REV	REVISION RECORD	APP	DR	CK
12-15-00	NC	ECO 13927	COLL	MS	MZ
5-1-00	A	ECO 16260	BCW	ME	TK
12-1-00	B	ECO 17093		ME	



KITTED WITH ONE ALIGNMENT INSERT



NOTES:

- MATERIAL AND FINISHES:**
INSULATOR: GLASS FILLED POLYESTER, UL 94V-0 BLUE COLOR.
ALIGNMENT INSERT: GLASS FILLED POLYESTER, UL 94V-0 BLUE COLOR.
- ELECTRICAL CHARACTERISTICS:**
INSULATOR RESISTANCE: 5 G OHMS PER IEC 512-2, TEST 3a.
- MECHANICAL CHARACTERISTICS:**
BLIND MATING SYSTEM: MALE AND FEMALE CONNECTOR BODIES PROVIDE "LEAD-IN" FOR 7.6mm [0.30 in.] DIAMETRAL MISALIGNMENT.
POLARIZATION: PROVIDED BY CONNECTOR BODY DESIGN.
- WORKING TEMPERATURE:** -55°C TO +125°C.
- CONTACTS ORDERED SEPARATELY:**
CONTACTS: PRECISION MACHINED COPPER ALLOY WITH GOLD OVER NICKEL.
INSERT CONTACT IN REAR FACE OF INSULATOR, RELEASE FROM FRONT FACE OF INSULATOR. CONTACT SIZES ARE 12 AND 20.
- DIMENSIONS ARE IN MILLIMETERS [INCHES].**

		POSITRONIC INDUSTRIES INC. www.connectpositronic.com	
		MINI-INFINITY SERIES 12 SIZE 12, 16 SIZE 20 COMP CONTACTS	SCALE N.T.S.
DECIMAL TOL. ± 0.30 [0.015]		TITLE MIP28W12M0000	
WF # 3246		DATE 12-15-98	DRAWING NUMBER SK3076
ANGULAR TOL. ± N/A		REV. B	