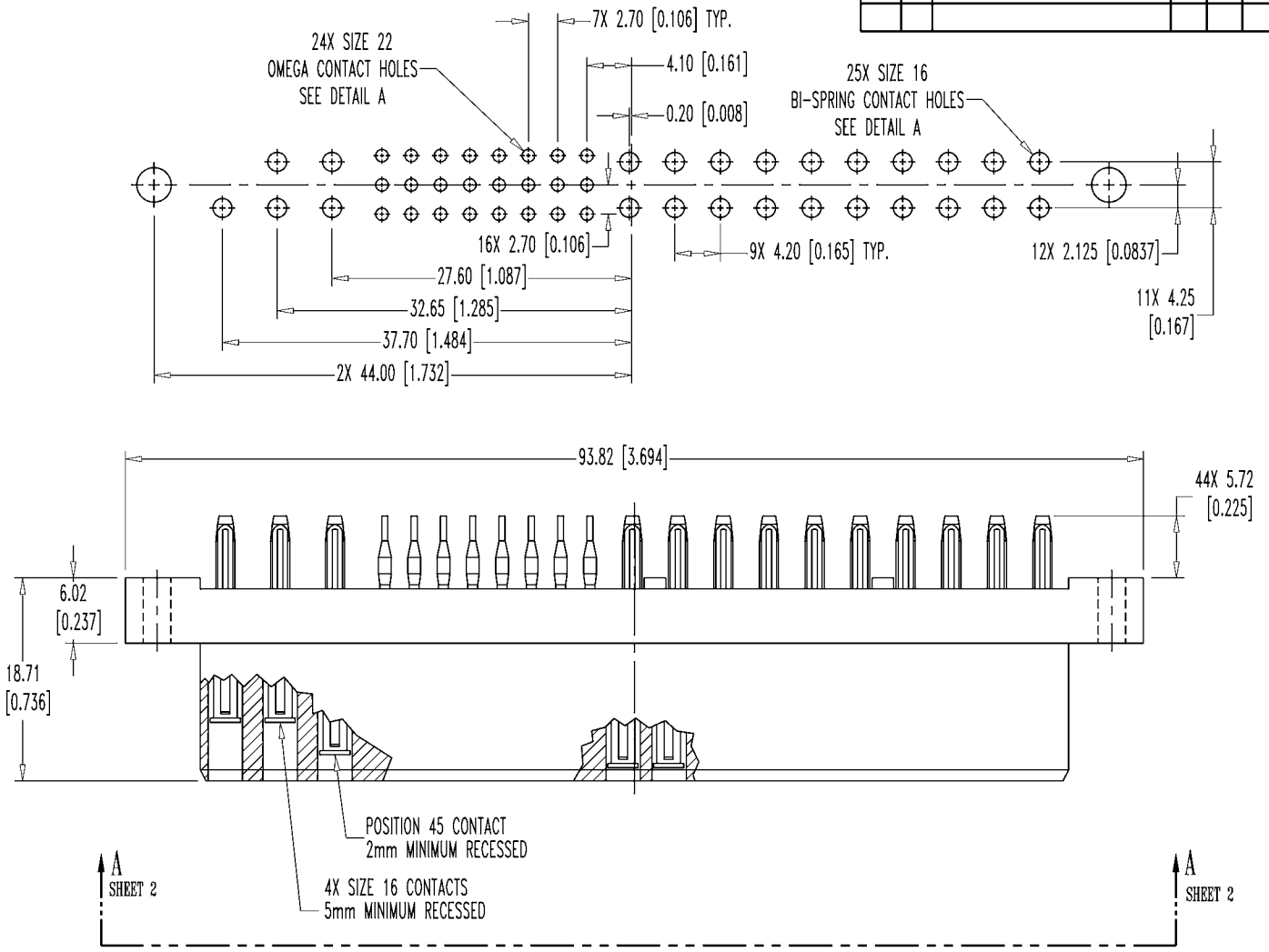


POSITRONIC INDUSTRIES BELIEVES THE DATA ON THIS DRAWING TO BE RELIABLE, SINCE THE TECHNICAL INFORMATION IS GIVEN FREE OF CHARGE, THE USER EMPLOYS SUCH INFORMATION AT HIS OWN DISCRETION AND RISK. POSITRONIC INDUSTRIES ASSUMES NO RESPONSIBILITY FOR RESULTS OBTAINED OR DAMAGES INCURRED FROM USE OF SUCH INFORMATION IN WHOLE OR IN PART.

DATE	REV	REVISION RECORD	APP	DR	CK
9-12-02	NC	ECO 19992	RCW	JLG	TK
8-9-05	A	ECO 24483		TH	



NOTES:

1. MATERIALS AND FINISHES:

- INSULATOR: GLASS FILLED POLYESTER, UL 94V-0. COLOR: BLUE.
- SIZE 16 CONTACTS: HIGH CONDUCTIVITY PRECISION MACHINED COPPER ALLOY WITH GOLD FLASH OVER NICKEL.
- SIZE 22 CONTACTS: PRECISION MACHINED COPPER ALLOY WITH GOLD FLASH OVER NICKEL.


2. ELECTRICAL CHARACTERISTICS:

- CONTACT CURRENT RATING:
- SIZE 16 CONTACTS: 28 AMPERES CONTINUOUS, DERATED PER IEC 512-3, TEST 5b.
- SIZE 22 CONTACTS: 3 AMPERES NOMINAL.
- INITIAL CONTACT RESISTANCE:
- SIZE 16 CONTACTS: 0.0007 OHMS. MAX. PER IEC 512-2, TEST 2b.
- SIZE 22 CONTACTS: 0.004 OHMS MAX.
- INSULATION RESISTANCE: 5 G OHMS PER IEC 512-2, TEST 3a, METHOD A.
- WORKING TEMPERATURE: -55°C TO +125°C.

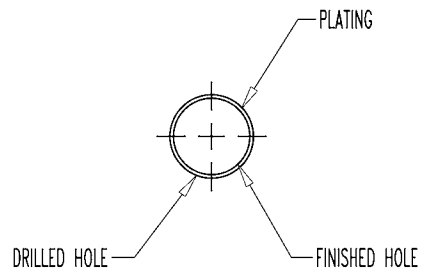
3. MOS 379.0 ALLOWS FOR POSITIONS 46, 47, 48, AND 49 TO HAVE 5.00 [0.197] RECESS.

POSITION 45 TO HAVE 2.00 [0.079] RECESS.

4. DIMENSIONS ARE IN MILLIMETERS [INCHES].

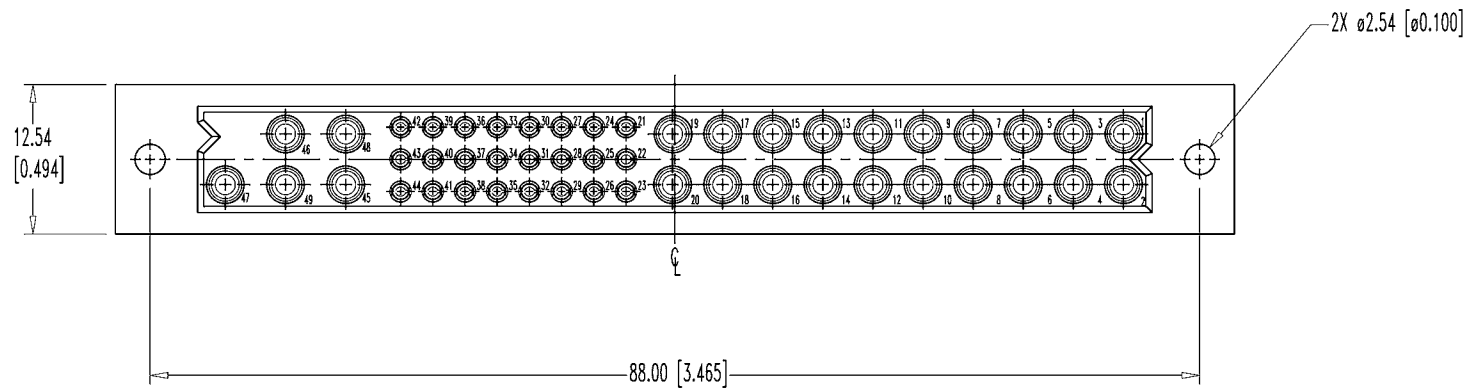
 <p>POSITRONIC INDUSTRIES INC. SPRINGFIELD, MISSOURI 65801</p>		SCALE	DRAWN BY
		N.T.S.	J. GREEN
DECIMAL TOL. ± 0.38 [0.015]		PCI SERIES	APPROVED BY
			RCW
TITLE PCIH49W25F9300A1-379.0			
ANGULAR TOL. ± 3°	DATE	DRAWING NUMBER	REV.
	9-12-02	SK4629	SHEET 1 OF 2 A

POSTRONIC INDUSTRIES BELIEVES THE DATA ON THIS DRAWING TO BE RELIABLE, SINCE THE TECHNICAL INFORMATION IS GIVEN FREE OF CHARGE, THE USER EMPLOYS SUCH INFORMATION AT HIS OWN DISCRETION AND RISK. POSTRONIC INDUSTRIES ASSUMES NO RESPONSIBILITY FOR RESULTS OBTAINED OR DAMAGES INCURRED FROM USE OF SUCH INFORMATION IN WHOLE OR IN PART.



PRESS FIT CONTACT HOLES SEE SK6370

DETAIL A



VIEW A-A