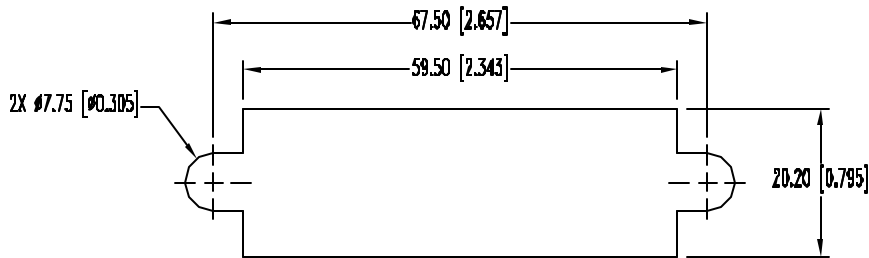
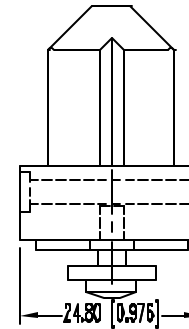
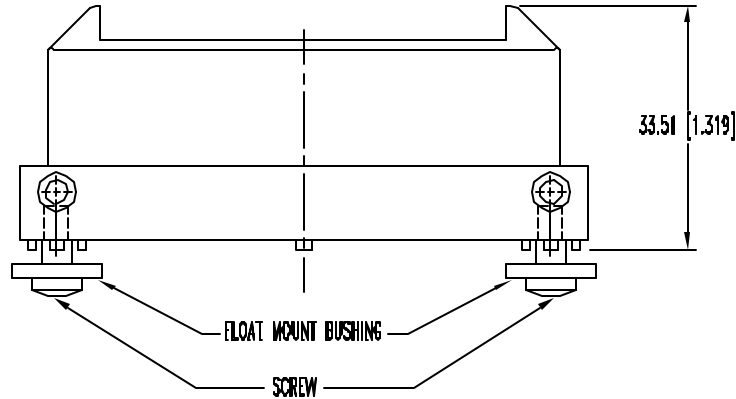
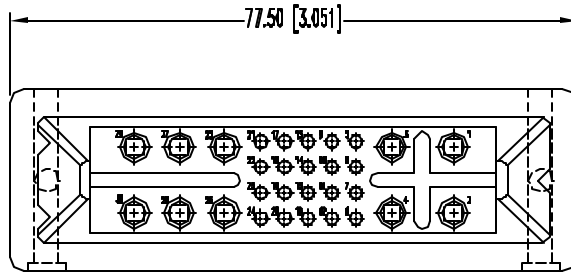


POSITRONIC INDUSTRIES BELIEVES THE DATA ON THIS DRAWING TO BE RELIABLE, SINCE THE TECHNICAL INFORMATION IS GIVEN FREE OF CHARGE, THE USER EMPLOYEES SUCH INFORMATION AT HIS OWN DISCRETION AND RISK. POSITRONIC INDUSTRIES ASSUMES NO RESPONSIBILITY FOR RESULTS OBTAINED OR DAMAGES INCURRED FROM USE OF SUCH INFORMATION IN WHOLE OR IN PART.

SK4025

DATE	REV	REVISION RECORD	APP	DR	CK
11-7-01	NC	ECO 18583		YK	



FLOAT MOUNT PANEL CUTOUT

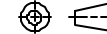
NOTES:

- MATERIAL AND FINISHES:**  
INSULATOR: GLASS FILLED POLYESTER, UL 94V-0 BLUE COLOR.  
FLOAT MOUNT SCREWS AND BUSHINGS: STEEL, ZINC PLATED.
- ELECTRICAL CHARACTERISTICS:**  
INSULATOR RESISTANCE: 5 G OHMS PER IEC 512-2, TEST 3a.  
VOLTAGE PROOF: 2000 V rms PER IEC 512-2, TEST 4a, METHOD C.  
CREEPAGE DISTANCE: CONTACT POSITION:  

1 TO 2:	9.44mm [0.372in.]
1 TO 4:	12.73mm [0.501in.]
2 TO 3:	12.73mm [0.501in.]
26 TO 29:	15.70mm [0.618in.]
28 TO 29:	11.35mm [0.447in.]
29 TO 30:	9.44mm [0.372in.]
5 TO 6:	0.66mm [0.026in.]
5 TO 9:	0.66mm [0.026in.]
- MECHANICAL CHARACTERISTICS:**  
BLIND MATING SYSTEM: MALE AND FEMALE CONNECTOR BODIES PROVIDE "LEAD-IN" FOR 7.6MM [0.300 INCH] DIAMETRAL MISALIGNMENT.  
POLARIZATION: PROVIDED BY CONNECTOR BODY DESIGN.
- WORKING TEMPERATURE:** -55°C TO +125°C.
- CONTACTS ORDERED SEPARATELY:**  
CONTACTS: PRECISION MACHINED COPPER ALLOY WITH GOLD OVER NICKEL.  
INSERT CONTACT IN REAR FACE OF INSULATOR, RELEASE FROM FRONT FACE OF INSULATOR. CONTACT SIZES ARE 12 AND 20.
- DIMENSIONS ARE IN MILLIMETERS [INCHES].**



**POSITRONIC INDUSTRIES INC.**  
www.connectpositronic.com

 DECIMAL TOL $\pm 0.30$ [0.015]	MINI-INFINITY, CRIMP 10 SIZE 12, 20 SIZE 20 CONTACTS	SCALE N.T.S.	DRAWN BY Y. KELLYBREW
	TITLE MIP30WA10F00820		
WF # 4145	DATE 11-7-01	DRAWING NUMBER SK4025	REV. NC