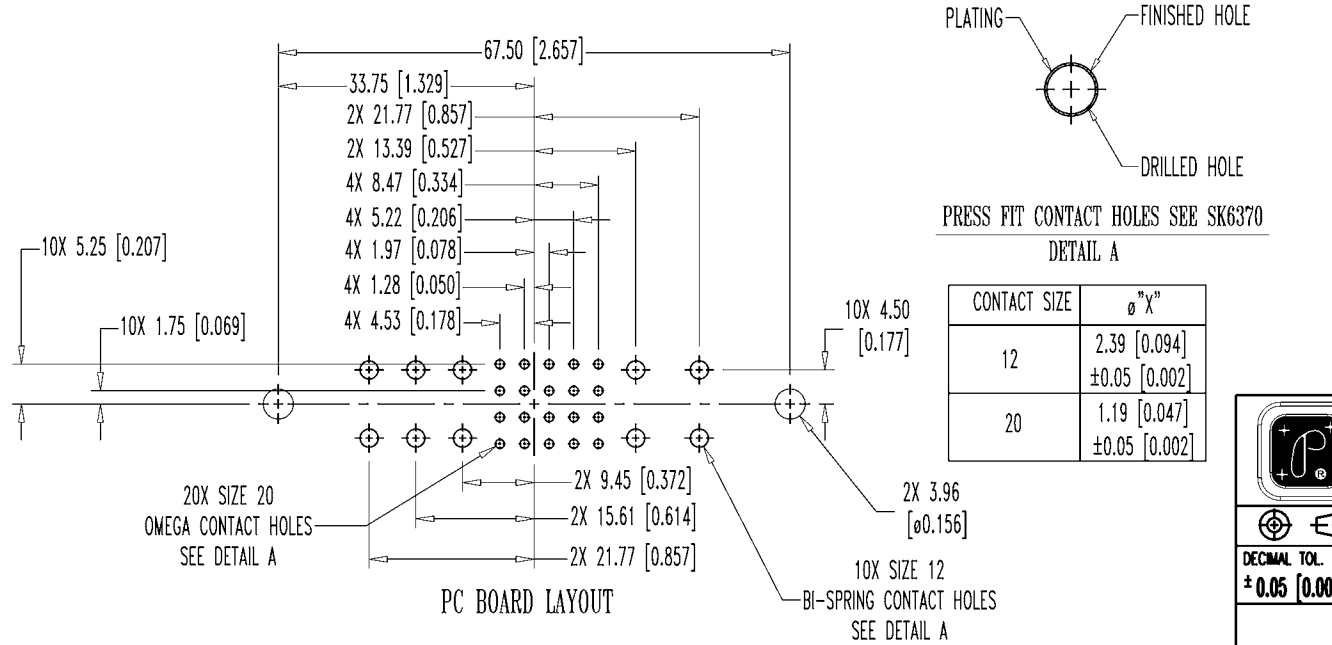
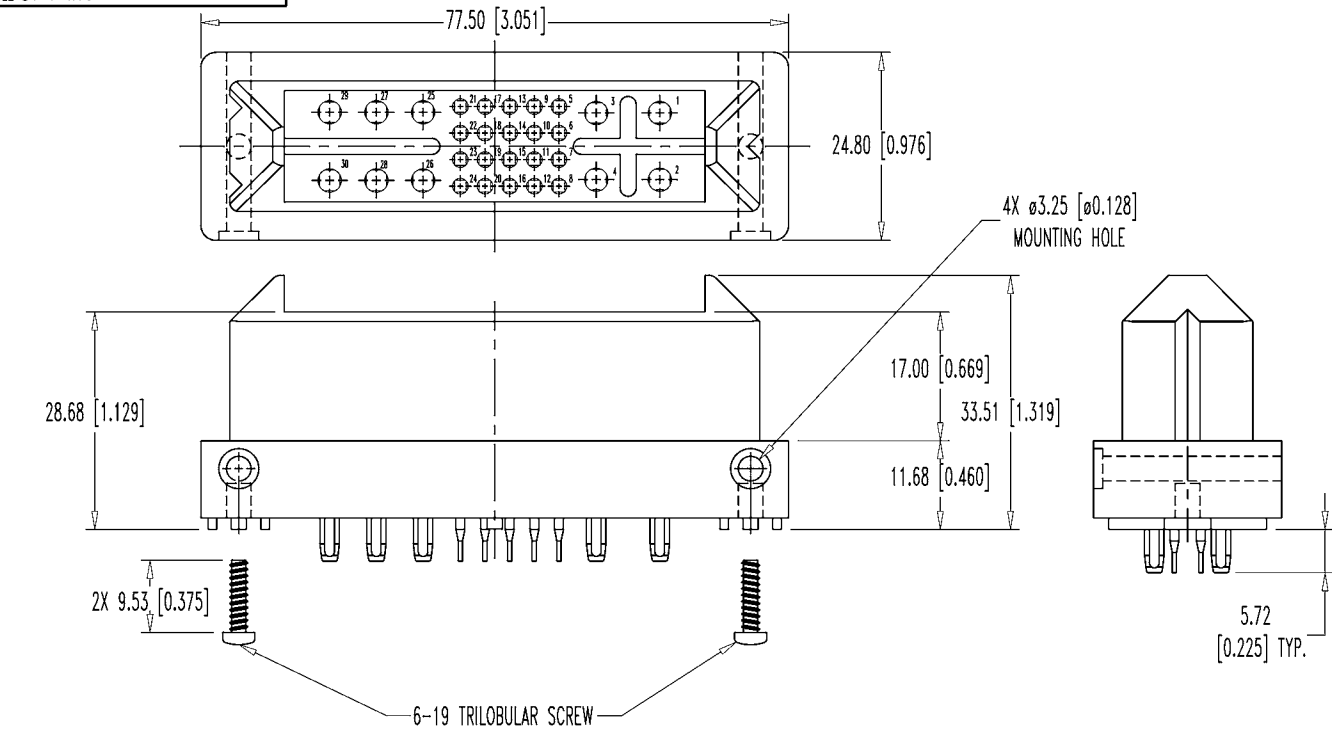


SK3256

POSITRONIC INDUSTRIES BELIEVES THE DATA ON THIS DRAWING TO BE RELIABLE, SINCE THE TECHNICAL INFORMATION IS GIVEN FREE OF CHARGE, THE USER EMPLOYS SUCH INFORMATION AT HIS OWN DISCRETION AND RISK. POSITRONIC INDUSTRIES ASSUMES NO RESPONSIBILITY FOR RESULTS OBTAINED OR DAMAGES INCURRED FROM USE OF SUCH INFORMATION IN WHOLE OR IN PART.

DATE	REV	REVISION RECORD	APP	DR	CK
1-26-00	NC	ECO 15991	RCW	ME	MZ
9-1-05	A	ECO 24537		TH	



NOTES:

- MATERIAL AND FINISHES:
INSULATOR: GLASS FILLED POLYESTER, UL 94V-0 BLUE COLOR.
CONTACTS: COPPER ALLOY WITH GOLD FLASH OVER NICKEL.
MOUNTING SCREWS: STEEL, ZINC PLATED.
- ELECTRICAL CHARACTERISTICS:
INITIAL CONTACT RESISTANCE: SIZE 12: 0.005 OHMS, MAXIMUM
SIZE 20: 0.007 OHMS, MAXIMUM
PER IEC 512-2, TEST 2b.
INSULATOR RESISTANCE: 5 G OHMS PER IEC 512-2, TEST 3a.
VOLTAGE PROOF: 2000 V rms PER IEC 512-2, TEST 4a, METHOD C.
CREEPAGE DISTANCE: CONTACT POSITION:
1 TO 2: 9.44mm [0.372in.]
1 TO 4: 12.73mm [0.501in.]
2 TO 3: 12.73mm [0.501in.]
26 TO 29: 15.70mm [0.618in.]
28 TO 29: 11.35mm [0.447in.]
29 TO 30: 9.44mm [0.372in.]
5 TO 6: 0.66mm [0.026in.]
5 TO 9: 0.66mm [0.026in.]
- MECHANICAL CHARACTERISTICS:
BLIND MATING SYSTEM: MALE AND FEMALE CONNECTOR BODIES PROVIDE "LEAD-IN" FOR 7.6MM [0.300 INCH] DIAMETRAL MISALIGNMENT.
POLARIZATION: PROVIDED BY CONNECTOR BODY DESIGN.
FIXED CONTACTS: PRINTED BOARD TERMINATIONS.
- WORKING TEMPERATURE: -55°C TO +125°C.
- DIMENSIONS ARE IN MILLIMETERS [INCHES].

POSITRONIC INDUSTRIES INC.
www.connectpositronic.com

MINI-INFINITY	SCALE	DRAWN BY	M. ENEA
10 SIZE 12, 20 SIZE 20 CONTACTS	N.T.S.	APPROVED BY	RCW
TITLE			
MIP30WA10F9300A1			
DATE	DRAWING NUMBER	REV.	
1-26-00	SK3256	A	