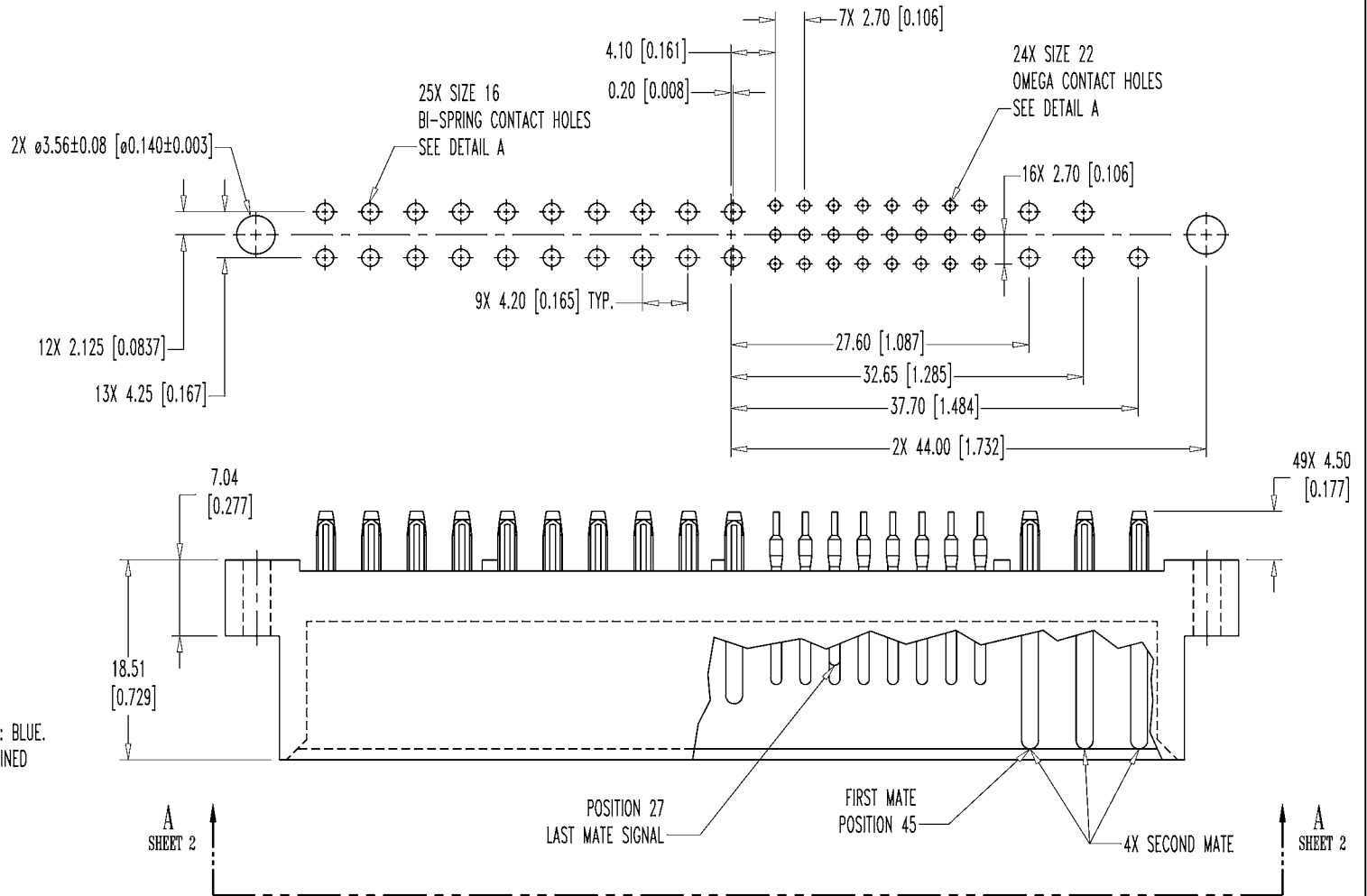


POSITRONIC INDUSTRIES BELIEVES THE DATA ON THIS DRAWING TO BE RELIABLE. SINCE THE TECHNICAL INFORMATION IS GIVEN FREE OF CHARGE, THE USER EMPLOYS SUCH INFORMATION AT HIS OWN DISCRETION AND RISK. POSITRONIC INDUSTRIES ASSUMES NO RESPONSIBILITY FOR RESULTS OBTAINED OR DAMAGES INCURRED FROM USE OF SUCH INFORMATION IN WHOLE OR IN PART.

DATE	REV	REVISION RECORD	APP	DR	CK
3-13-03	NC	ECO 20701	RCW	YK	COLE
4-28-03	A	ECO 20862	RCW	YK	TK
6-3-03	B	ECO 20998	RCW	MEG	TK
8-9-06	C	ECO 24483		TH	

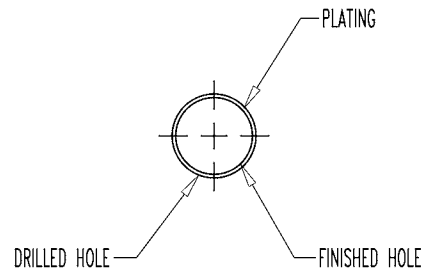


NOTES:

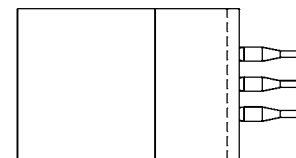
- MATERIALS AND FINISHES:
 INSULATOR: GLASS FILLED POLYESTER, UL 94V-0. COLOR: BLUE.
 SIZE 16 CONTACTS: HIGH CONDUCTIVITY PRECISION MACHINED COPPER ALLOY WITH GOLD FLASH OVER NICKEL.
 SIZE 22 CONTACTS: PRECISION MACHINED COPPER ALLOY WITH GOLD FLASH OVER NICKEL.
- ELECTRICAL CHARACTERISTICS:
 CONTACT CURRENT RATING:
 SIZE 16 POWER CONTACTS: 28 AMPERES CONTINUOUS, ALL CONTACTS UNDER LOAD.
 SIZE 22 SIGNAL CONTACTS: 3 AMPERES NOMINAL.
 INITIAL CONTACT RESISTANCE; MAXIMUM:
 SIZE 16 CONTACT: 0.0007 OHMS MAXIMUM.
 SIZE 22 CONTACT: 0.004 OHMS MAXIMUM.
 PER IEC 512-2, TEST 2b.
 INSULATOR RESISTANCE: 5 G OHMS PER IEC 512-2, TEST 3a.
- WORKING TEMPERATURE: -55°C TO +125°C.
- MOS 378.0 ALLOWS FOR CONTACT POSITIONS 45, 46, 47, 48, 49 TO HAVE A MATING LENGTH OF 12.67 [0.499] MEASURED FROM THE TERMINATION SIDE OF MOLDING TO THE MATING END OF CONTACTS.
- DIMENSIONS ARE IN MILLIMETERS [INCHES].

 POSITRONIC INDUSTRIES INC. www.connectpositronic.com		SCALE	DRAWN BY
		N.T.S.	Y.KELLEYBREW
DECIMAL TOL.	PCI SERIES	APPROVED BY	RCW
± 0.38 [0.015]	TITLE	PCIH49W25M9300A1-378.0	
ANGULAR TOL.	DATE	DRAWING NUMBER	REV.
$\pm 3^\circ$	3-13-03	SK4945	SHEET 1 OF 2 C

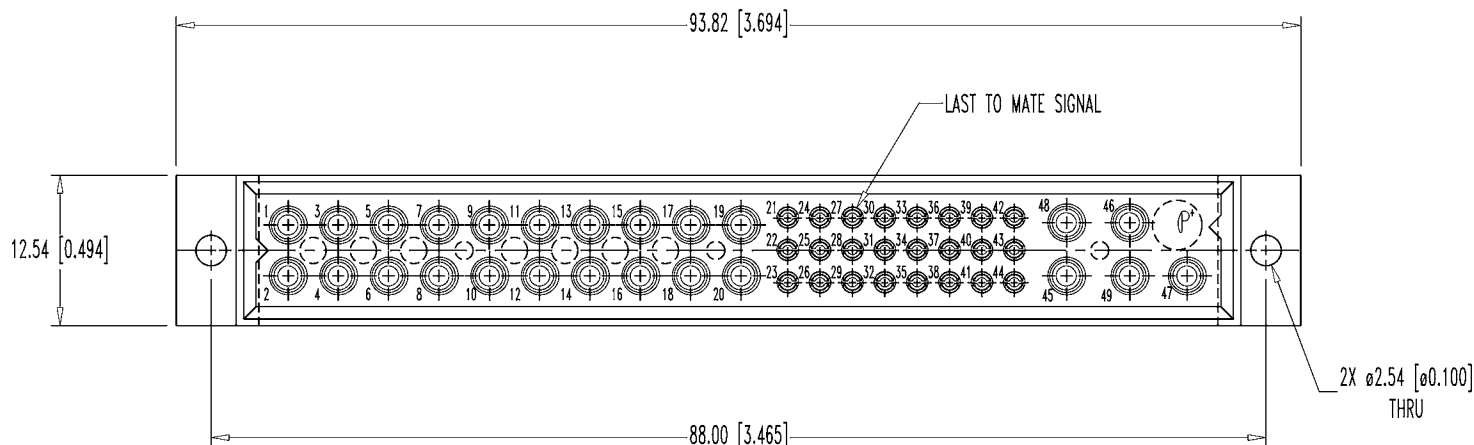
POSTRONIC INDUSTRIES BELIEVES THE DATA ON THIS DRAWING TO BE RELIABLE. SINCE THE TECHNICAL INFORMATION IS GIVEN FREE OF CHARGE, THE USER EMPLOYS SUCH INFORMATION AT HIS OWN DISCRETION AND RISK. POSTRONIC INDUSTRIES ASSUMES NO RESPONSIBILITY FOR RESULTS OBTAINED OR DAMAGES INCURRED FROM USE OF SUCH INFORMATION IN WHOLE OR IN PART.



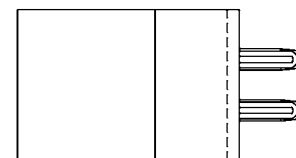
PRESS FIT CONTACT HOLES SEE SK6370
DETAIL A



SIZE 22



VIEW A-A



SIZE 16