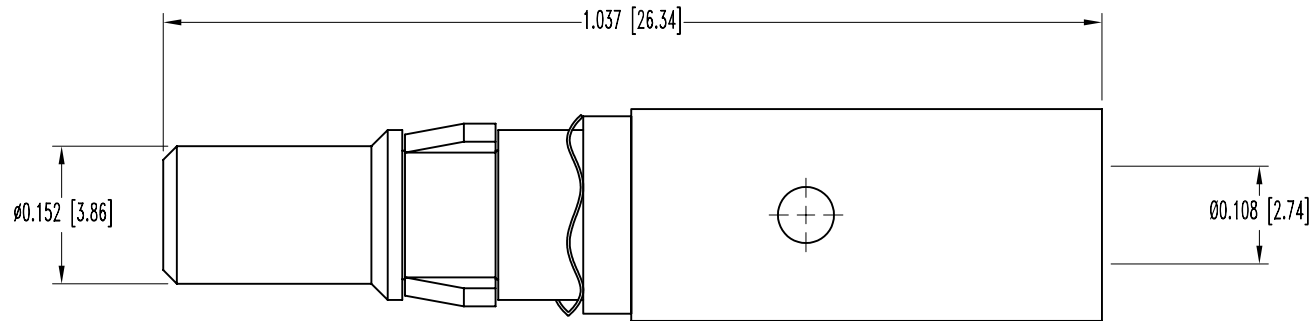


SK5716

POSITRONIC INDUSTRIES BELIEVES THE DATA ON THIS DRAWING TO BE RELIABLE. SINCE THE TECHNICAL INFORMATION IS GIVEN FREE OF CHARGE, THE USER EMPLOYS SUCH INFORMATION AT HIS OWN DISCRETION AND RISK. POSITRONIC INDUSTRIES ASSUMES NO RESPONSIBILITY FOR RESULTS OBTAINED OR DAMAGES INCURRED FROM USE OF SUCH INFORMATION IN WHOLE OR IN PART.

DATE	REV	REVISION RECORD	APP	DR	CK
10-8-04	NC	ECO 23100		YK	



NOTES:

- MATERIALS AND FINISHES:
 CONTACT: COPPER ALLOY WITH PTFE TEFLON INSULATOR.
 FINISH: SIGNAL CONTACT-0.000030 [0.75 μ] GOLD OVER NICKEL. CONTACT BODY-GOLD FLASH OVER NICKEL.
- DIMENSIONS ARE IN INCHES [MILLIMETERS].

 POSITRONIC INDUSTRIES INC. www.connectpositronic.com		SCALE		DRAWN BY	
DECIMAL TOL. ± 0.015 [0.38]		CBD SERIES		N.T.S.	
ANGULAR TOL. $\pm 5^\circ$		DATE 10-8-04		DRAWING NUMBER SK5716	
		TITLE MS4103D		APPROVED BY YK	
				REV. NC	