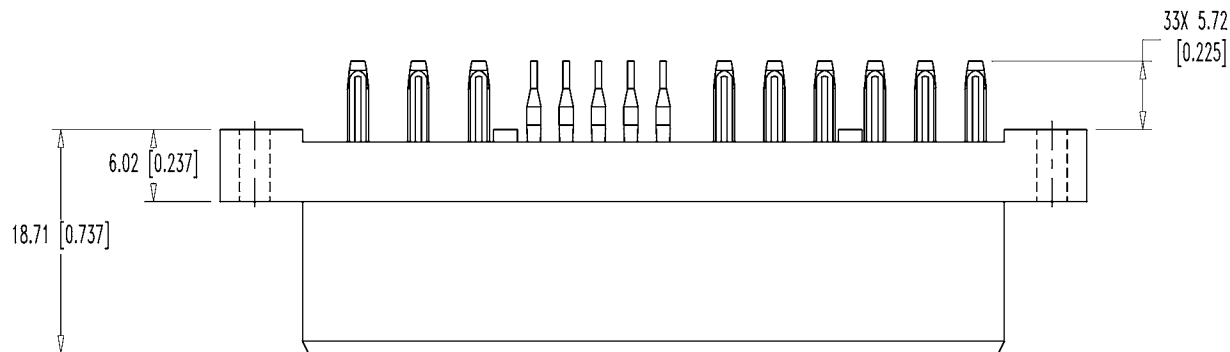
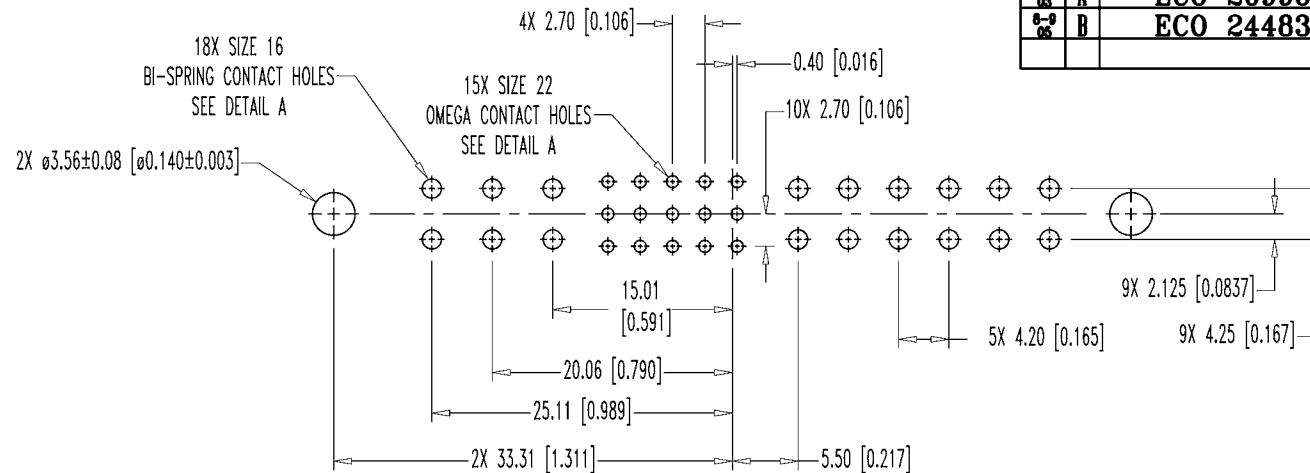


POSITRONIC INDUSTRIES BELIEVES THE DATA ON THIS DRAWING TO BE RELIABLE. SINCE THE TECHNICAL INFORMATION IS GIVEN FREE OF CHARGE, THE USER EMPLOYS SUCH INFORMATION AT HIS OWN DISCRETION AND RISK. POSITRONIC INDUSTRIES ASSUMES NO RESPONSIBILITY FOR RESULTS OBTAINED OR DAMAGES INCURRED FROM USE OF SUCH INFORMATION IN WHOLE OR IN PART.

DATE	REV	REVISION RECORD	APP	DR	CK
4-30-01	NC	ECO 17670	RCW	JLG	TK
6-2-03	A	ECO 20996	RCW	MEG	TK
8-9-05	B	ECO 24483		TH	



NOTES:

1. MATERIALS AND FINISHES:

INSULATOR: GLASS FILLED POLYESTER, UL 94V-0. COLOR: BLUE.
 SIZE 16 CONTACTS: HIGH CONDUCTIVITY PRECISION MACHINED COPPER ALLOY WITH GOLD FLASH OVER NICKEL.
 SIZE 22 CONTACTS: PRECISION MACHINED COPPER ALLOY WITH GOLD FLASH OVER NICKEL.

2. ELECTRICAL CHARACTERISTICS:

CONTACT CURRENT RATING:
 SIZE 16 POWER CONTACTS: 28 AMPERES CONTINUOUS, ALL CONTACTS UNDER LOAD.
 SIZE 22 SIGNAL CONTACTS: 3 AMPERES NOMINAL.
 INITIAL CONTACT RESISTANCE; PER IEC 512-2, TEST 2b.
 SIZE 16 CONTACT: 0.0007 OHMS MAXIMUM.
 SIZE 22 CONTACT: 0.004 OHMS MAXIMUM.
 INSULATOR RESISTANCE: 5 G OHMS PER IEC 512-2, TEST 3a.
 VOLTAGE PROOF:
 CONTACTS: 22 THROUGH 26: 1,500 V r.m.s.
 CONTACTS: 1 THROUGH 6: 1,500 V r.m.s.
 CONTACTS: 7 THROUGH 21: 1,000 V r.m.s.

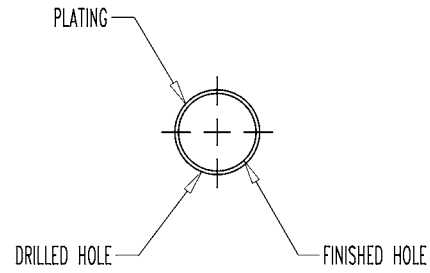
3. WORKING TEMPERATURE: -55°C TO +125°C.

4. DIMENSIONS ARE IN MILLIMETERS [INCHES].

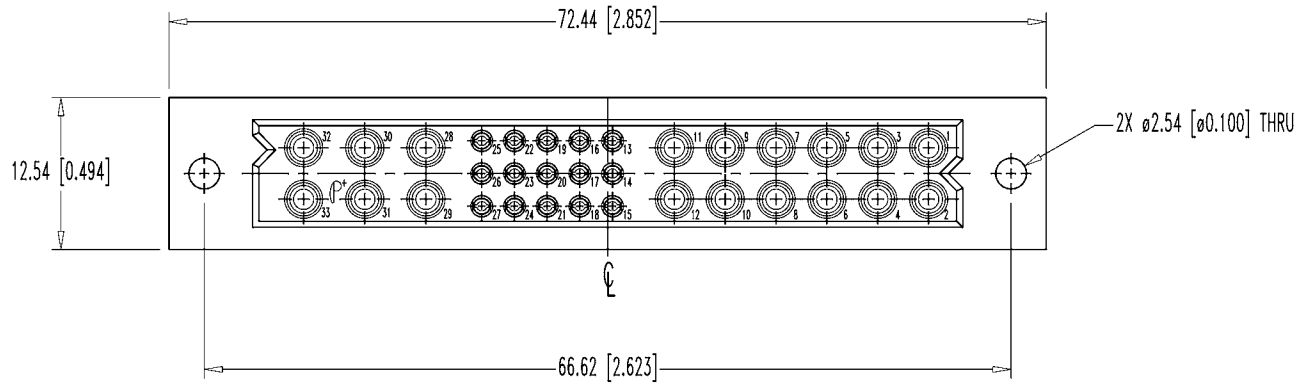


<p>POSITRONIC INDUSTRIES INC. www.connectpositronic.com</p>		SCALE	DRAWN BY
		PCI SERIES	J. GREEN
DECIMAL TOL.	TITLE	N.T.S.	APPROVED BY
± 0.38 [0.015]	PCIM33W18F9300A1		RCW
ANGULAR TOL.	DATE	DRAWING NUMBER	REV.
± 5°	4-30-01	SK3734	B

POSITRONIC INDUSTRIES BELIEVES THE DATA ON THIS DRAWING TO BE RELIABLE, SINCE THE TECHNICAL INFORMATION IS GIVEN FREE OF CHARGE, THE USER EMPLOYS SUCH INFORMATION AT HIS OWN DISCRETION AND RISK. POSITRONIC INDUSTRIES ASSUMES NO RESPONSIBILITY FOR RESULTS OBTAINED OR DAMAGES INCURRED FROM USE OF SUCH INFORMATION IN WHOLE OR IN PART.



PRESS FIT CONTACT HOLES SEE SK6370
DETAIL A



VIEW A-A