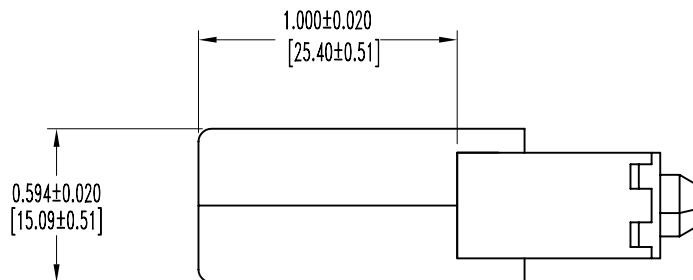
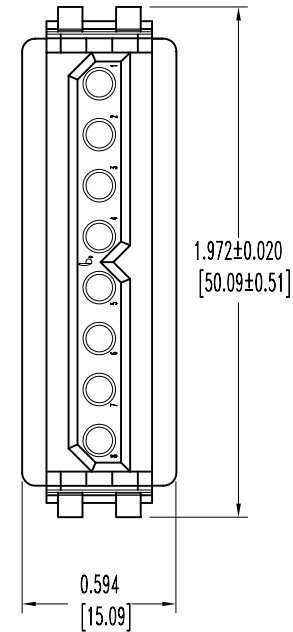
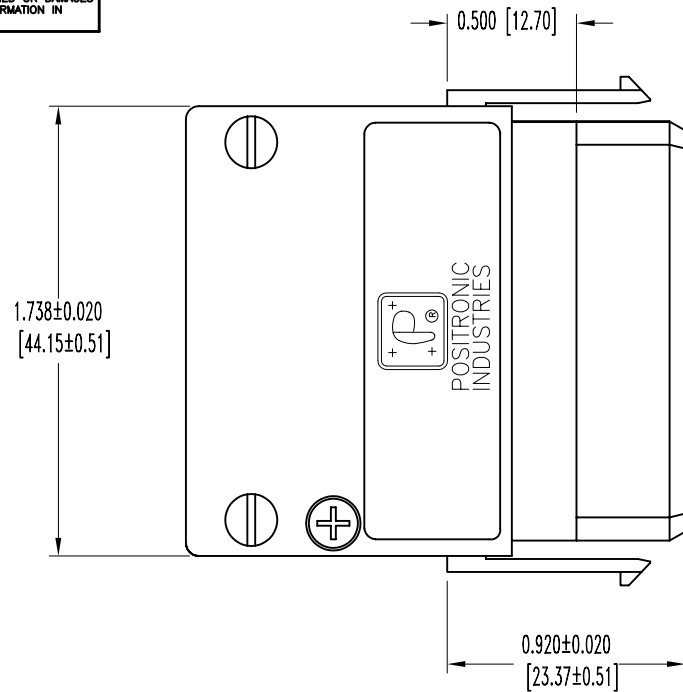


SK6888

POSITRONIC INDUSTRIES BELIEVES THE DATA ON THIS DRAWING TO BE RELIABLE. SINCE THE TECHNICAL INFORMATION IS GIVEN FREE OF CHARGE, THE USER EMPLOYS SUCH INFORMATION AT HIS OWN DISCRETION AND RISK. POSITRONIC INDUSTRIES ASSUMES NO RESPONSIBILITY FOR RESULTS OBTAINED OR DAMAGES INCURRED FROM USE OF SUCH INFORMATION IN WHOLE OR IN PART.

DATE	REV	REVISION RECORD	APP	DR	CK
12-28-05	NC	ECO 25257		YK	



NOTES:

1. MATERIALS AND FINISHES:

- INSULATOR: GLASS FILLED POLYESTER, UL 94V-0, COLOR BLUE.
- HOOD: GLASS FILLED POLYESTER, UL 94V-0, COLOR BLUE.
- HOOD SCREWS: STEEL, ZINC PLATE WITH CHROMATE SEAL.
- CABLE CLAMPS: STEEL, NICKEL PLATE.
- CABLE CLAMP SCREWS: STEEL, ZINC PLATE WITH CHROMATE SEAL.

2. ELECTRICAL CHARACTERISTICS:

- INSULATOR RESISTANCE: 5 G OHMS PER IEC 512-2, TEST 3a, METHOD A.
- WORKING VOLTAGE: 600 VAC.

3. WORKING TEMPERATURE: -55°C TO +125°C

4. CONNECTORS ARE ROHS COMPLIANT PER ROHS DIRECTIVE 2002/95/EC OF 27 JAN 2003.

5. DIMENSIONS ARE INCHES[MILLIMETERS]

		POSITRONIC INDUSTRIES INC. www.connectpositronic.com	
DATE 12-28-05	DRAWING NUMBER SK6888	SCALE N.T.S.	DRAWN BY YK
ANGULAR TOL. ±5°	REV. NC	APPROVED BY	APPROVED BY