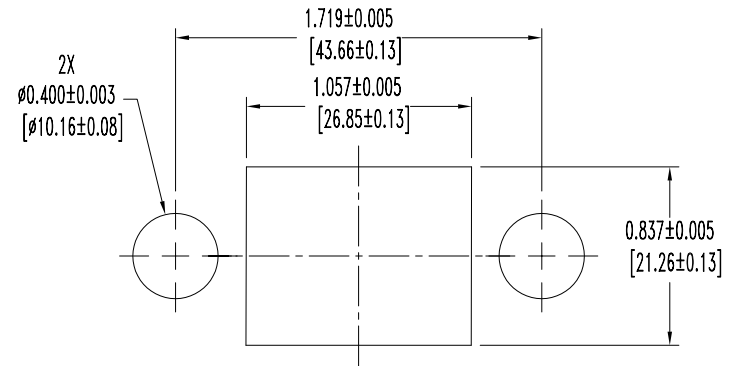
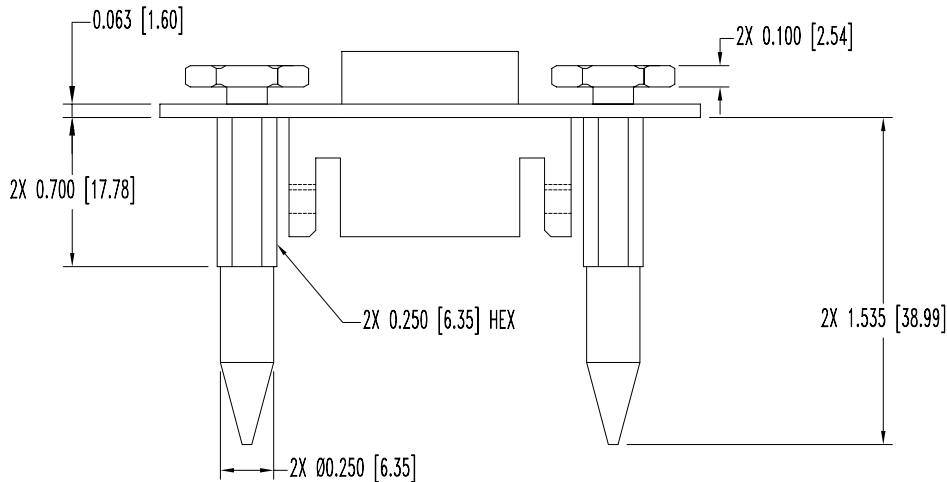
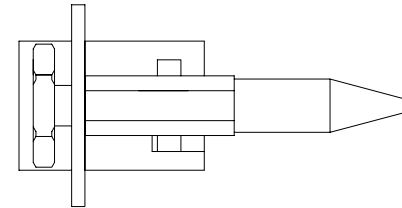
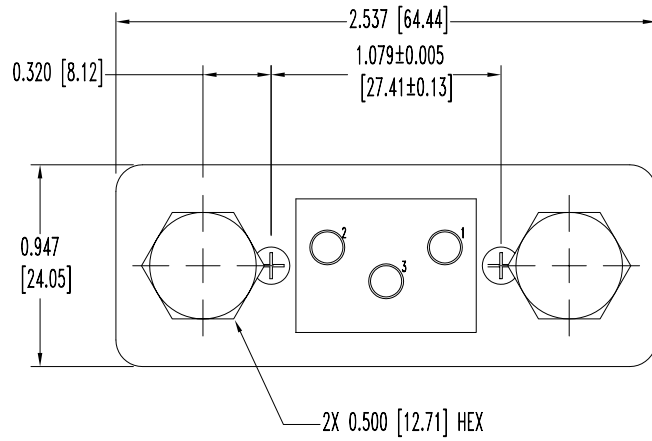


SK5811

POSITRONIC INDUSTRIES BELIEVES THE DATA ON THIS DRAWING TO BE RELIABLE. SINCE THE TECHNICAL INFORMATION IS GIVEN FREE OF CHARGE, THE USER EMPLOYS SUCH INFORMATION AT HIS OWN DISCRETION AND RISK. POSITRONIC INDUSTRIES ASSUMES NO RESPONSIBILITY FOR RESULTS OBTAINED OR DAMAGES INCURRED FROM USE OF SUCH INFORMATION IN WHOLE OR IN PART.

DATE	REV	REVISION RECORD	APP	DR	CK
11-8-04	NC	ECO 23247	RCW	YK	COLE
4-4-07	A	ECO 27719		YK	



PANEL CUTOUT
(0.040 [1.02] THICK PANEL)

NOTES:

- MATERIALS AND FINISHES:
INSULATOR: GLASS FILLED POLYESTER, UL 94V-0. COLOR BLUE.
BLIND MATING PLATE: STAINLESS STEEL, PASSIVATED.
BLIND MATING GUIDE: STAINLESS STEEL, PASSIVATED.
FLOAT SCREWS: STEEL, ZINC PLATE WITH CHROMATE SEAL.
SCREWS: STEEL, ZINC PLATE WITH CHROMATE SEAL.
- ELECTRICAL CHARACTERISTICS:
INSULATOR RESISTANCE: - 5 G OHMS, PER IEC 512-2, TEST 3a, METHOD A.
WORKING VOLTAGE: 1,250 V. r.m.s.
- TEMPERATURE RANGE: -55°C TO -125°C.
- PANEL THICKNESS MAY IMPACT THE ORIENTATION OF MATING END OF BLIND MATE PIN. SHIMMING BETWEEN THE PANEL AND THE HEAD OF THE BLIND MATE PIN MAY BE NECESSARY TO MINIMIZE TILT OF THE BLIND MATE SYSTEM. CONTACT TECHNICAL SALES FOR ADDITIONAL TECHNICAL INFORMATION.
- DIMENSIONS ARE IN INCHES [MILLIMETERS].

	POSITRONIC INDUSTRIES INC. www.connectpositronic.com		FSCM 28198
		PCS SERIES	SCALE N.T.S.
DECIMAL TOL. ± 0.015 [0.38]	TITLE PLB3W3M10110		
ANGULAR TOL. ± 5°	DATE 11-8-04	DRAWING NUMBER SK5811	REV. A
		APPROVED BY RCW	