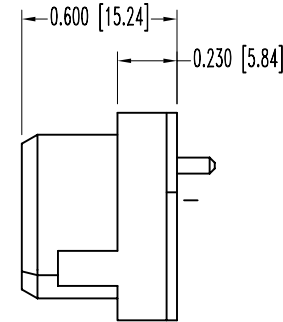
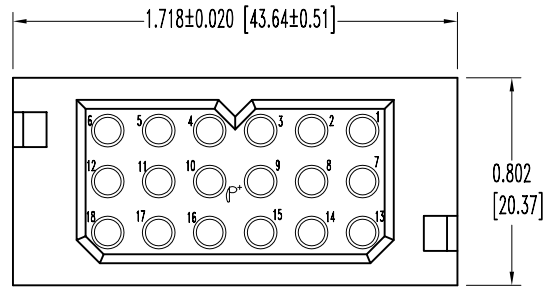
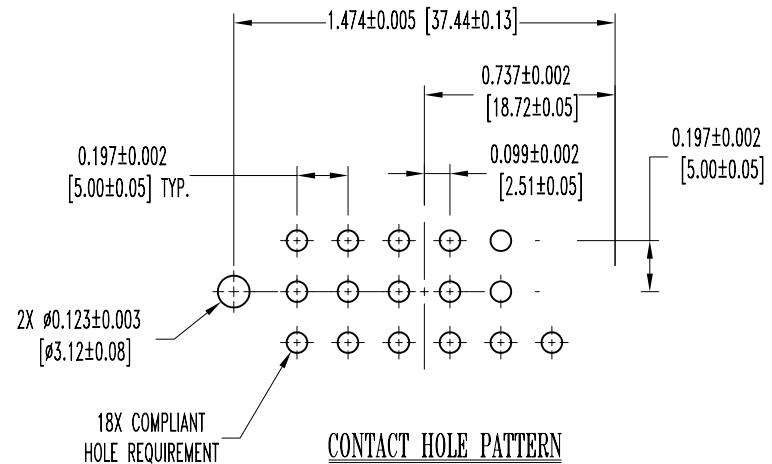
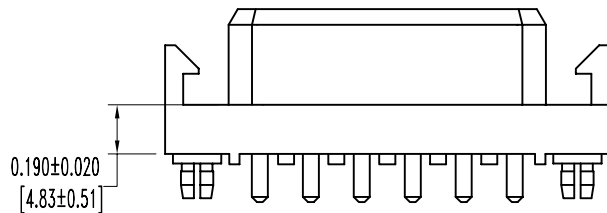


POSITRONIC INDUSTRIES BELIEVES THE DATA ON THIS DRAWING TO BE RELIABLE. SINCE THE TECHNICAL INFORMATION IS GIVEN FREE OF CHARGE, THE USER EMPLOYS SUCH INFORMATION AT HIS OWN DISCRETION AND RISK. POSITRONIC INDUSTRIES ASSUMES NO RESPONSIBILITY FOR RESULTS OBTAINED OR DAMAGES INCURRED FROM USE OF SUCH INFORMATION IN WHOLE OR IN PART.

DATE	REV	REVISION RECORD	APP	DR	CK
10-18-05	NC	ECO 24875		YK	



71]



NOTES:

1. MATERIALS AND FINISHES:

INSULATOR: GLASS FILLED POLYESTER, UL 94V-0, COLOR BLUE.
 CONTACTS: COPPER ALLOY WITH GOLD OVER NICKEL ON MATING END AND 0.00020 [5.0μ] SOLDER COAT ON TERMINATION END.
 PUSH-ON FASTENER: SPRING TEMPERED COPPER ALLOY, TIN PLATE.

2. ELECTRICAL CHARACTERISTICS:

CONTACT CURRENT RATING: 23 AMPS PER UL 1977.
 INITIAL CONTACT RESISTANCE: 0.0016 OHMS MAX. PER IEC 512-2, TEST 2b.
 INSULATION RESISTANCE: 5 G OHMS PER IEC 512-2, TEST 3a, METHOD A.
 WORKING VOLTAGE: 600 VAC.

3. WORKING TEMPERATURE: -55°C TO +125°C.

4. CONNECTORS ARE ROHS COMPLIANT PER ROHS DIRECTIVE 2002/95/EC OF 27 JAN 2003, UTILIZING THE EXEMPTION THAT ALLOWS FOR LEAD IN SOLDER.

A SIGNED WAIVER IS REQUIRED STATING THE APPLICATION QUALIFIES TO THIS EXEMPTION.

5. DIMENSIONS ARE IN INCHES [MILLIMETERS].

		POSITRONIC INDUSTRIES INC. www.connectpositronic.com	
	PCS SERIES	SCALE N.T.S.	DRAWN BY YK
DECIMAL TOL. ±0.015 [0.38]	TITLE PLC18F3N0A2/AA		
ANGULAR TOL. ±5°	DATE 10-18-05	DRAWING NUMBER SK6648	REV. NC