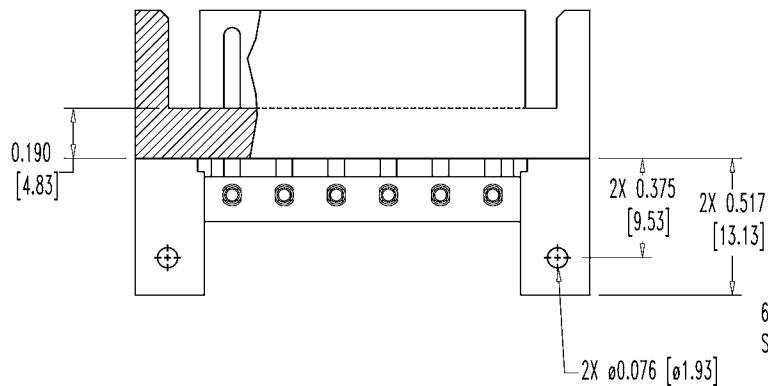
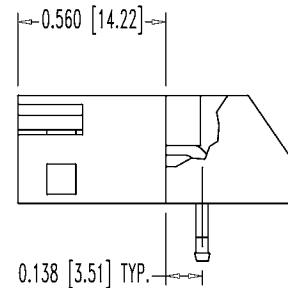
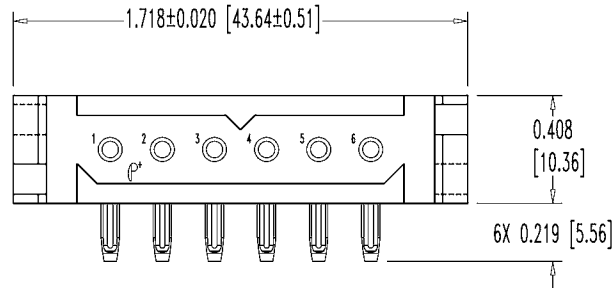


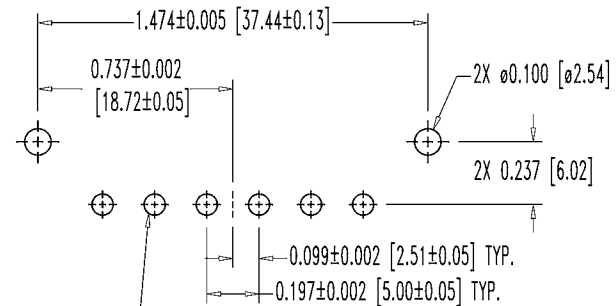
SK5673

POSITRONIC INDUSTRIES BELIEVES THE DATA ON THIS DRAWING TO BE RELIABLE, SINCE THE TECHNICAL INFORMATION IS GIVEN FREE OF CHARGE, THE USER EMPLOYS SUCH INFORMATION AT HIS OWN DISCRETION AND RISK. POSITRONIC INDUSTRIES ASSUMES NO RESPONSIBILITY FOR RESULTS OBTAINED OR DAMAGES INCURRED FROM USE OF SUCH INFORMATION IN WHOLE OR IN PART.

| DATE    | REV | REVISION RECORD | APP | DR | CK   |
|---------|-----|-----------------|-----|----|------|
| 9-14-04 | NC  | ECO 22994       | TK  | YK | COLE |
| 8-99-05 | A   | ECO 24482       |     | LO |      |
|         |     |                 |     |    |      |
|         |     |                 |     |    |      |



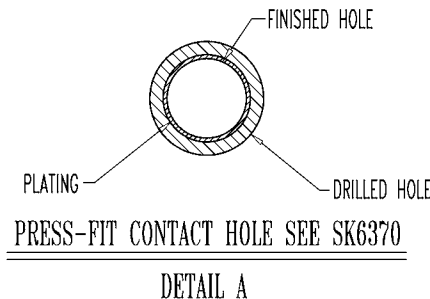
6X SIZE 16 BI-SPRING CONTACT HOLES  
SEE DETAIL A



CONTACT HOLE PATTERN

NOTES:

- MATERIALS AND FINISHES:**  
 INSULATOR: GLASS FILLED POLYESTER, UL 94V-0, COLOR BLUE.  
 CONTACTS: PRECISION MACHINED HIGH TENSILE COPPER ALLOY, GOLD FLASH OVER NICKEL PLATE.  
 MOUNTING BRACKET: GLASS FILLED POLYESTER, UL 94V-0, COLOR BLUE.  
 SCREWS: STEEL, ZINC PLATED.
- ELECTRICAL CHARACTERISTICS:**  
 CONTACT CURRENT RATING: 25 AMPS CONTINUOUS, PER UL 1977.  
 INITIAL CONTACT RESISTANCE: 0.0007 OHMS MAX. PER IEC 512-2, TEST 2b.  
 INSULATION RESISTANCE: 5 G OHMS PER IEC 512-2, TEST 3a, METHOD A.  
 WORKING VOLTAGE: 600 VAC.
- WORKING TEMPERATURE:** -55°C TO +125°C.
- DIMENSIONS ARE IN INCHES [MILLIMETERS].**



|                                |  |                |           |             |
|--------------------------------|--|----------------|-----------|-------------|
|                                | <b>POSITRONIC INDUSTRIES INC.</b><br>www.connectpositronic.com |                | SCALE     | DRAWN BY    |
|                                | PCS SERIES   | N.T.S.         | YK        | APPROVED BY |
| DECIMAL TOL.<br>± 0.015 [0.38] | TITLE  |                | T. KEPLEY |             |
| ANGULAR TOL.<br>± 5°           | PLAH06M63B30A1   |                | DATE      | REV.        |
|                                | 9-14-04  | DRAWING NUMBER | SK5673    | A           |