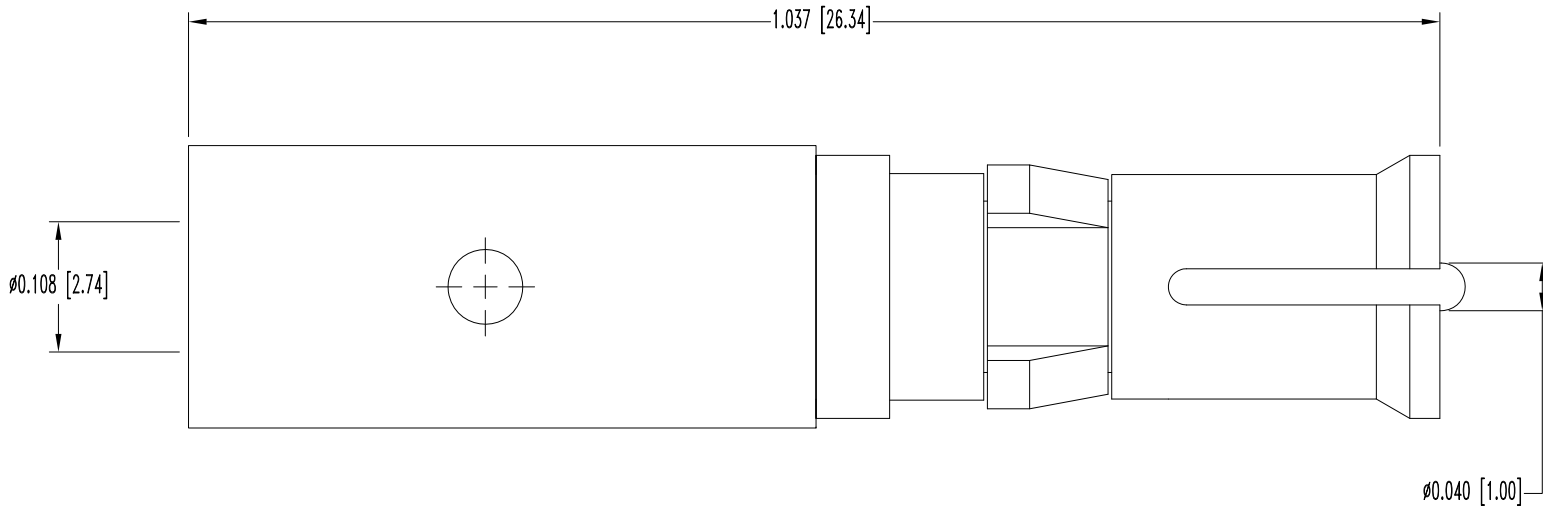


SK9292

THIS DRAWING CONTAINS INFORMATION PROPRIETARY TO POSITRONIC AND ITS SUBSIDIARIES. POSITRONIC BELIEVES THE DATA ON THIS DRAWING TO BE RELIABLE. SINCE THE TECHNICAL INFORMATION IS GIVEN FREE OF CHARGE, THE USER EMPLOYS SUCH INFORMATION AT HIS OWN DISCRETION AND RISK. POSITRONIC ASSUMES NO RESPONSIBILITY FOR RESULTS OBTAINED OR DAMAGES INCURRED FROM USE OF SUCH INFORMATION IN WHOLE OR IN PART.

DATE	REV	REVISION RECORD	APP	DR	CK
3-10-08	NC	ECO 29107	RCW	YK	COLE



NOTES:

1. MATERIAL: COPPER ALLOY WITH PTFE TEFLON INSULATOR.
2. FINISH: SIGNAL CONTACT-0.000030 [0.75μ] GOLD OVER NICKEL. CONTACT BODY-GOLD FLASH OVER NICKEL.
3. ELECTRICAL CHARACTERISTICS:
 INITIAL CONTACT RESISTANCE: 0.008 OHMS MAXIMUM.
 NOMINAL IMPEDANCE: 50 OHMS.
 INSERTION LOSS: -0.46dB AT 1 GHz
 -1.5 dB AT 2 GHz
 VSWR: 1.15 AVERAGE AT 1 GHz
 1.56 AVERAGE AT 2 GHz
 PROOF VOLTAGE: 1000 V r.m.s.
 TEMPERATURE RANGE: -55°C TO +125°C.
4. CONTACTS ARE ROHS COMPLIANT PER ROHS DIRECTIVE 2002/95/EC OF 27 JAN 2003.
5. DIMENSIONS ARE IN INCHES [MILLIMETERS].

 POSITRONIC INDUSTRIES INC. www.connectpositronic.com		FSCM 28198	
 DECIMAL TOL. ± 0.015 [0.38]	CBD SERIES	SCALE N.T.S.	DRAWN BY YK
	TITLE FC4103D/AA		
ANGULAR TOL. ± 5°	DATE 3-10-08	DRAWING NUMBER SK9292	REV. NC