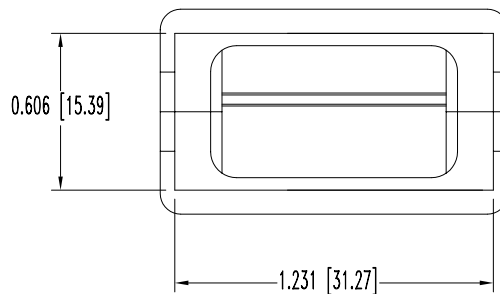
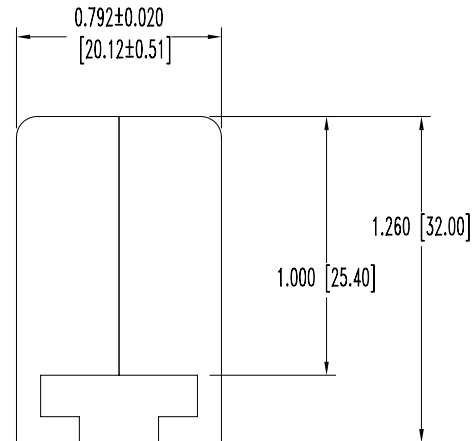
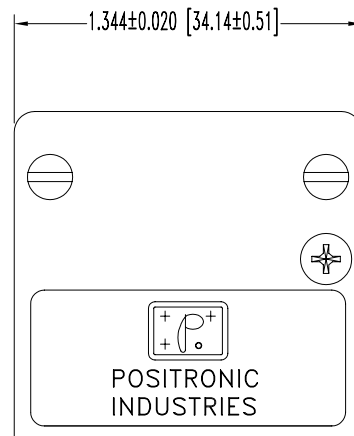


SK5412

POSITRONIC INDUSTRIES BELIEVES THE DATA ON THIS DRAWING TO BE RELIABLE. SINCE THE TECHNICAL INFORMATION IS GIVEN FREE OF CHARGE, THE USER EMPLOYS SUCH INFORMATION AT HIS OWN DISCRETION AND RISK. POSITRONIC INDUSTRIES ASSUMES NO RESPONSIBILITY FOR RESULTS OBTAINED OR DAMAGES INCURRED FROM USE OF SUCH INFORMATION IN WHOLE OR IN PART.

DATE	REV	REVISION RECORD	APP	DR	CK
5-7 04	NC	ECO 22292	RCW	YK	COLE
3-30 07	A	ECO 27712	TK	YK	TK
4-10 07	B	ECO 27756		YK	



NOTES:

1. MATERIALS AND FINISHES:

- HOOD: GLASS FILLED POLYESTER, UL 94 V-0, COLOR BLUE.
- HOOD SCREWS: STEEL, ZINC PLATE WITH CHROMATE SEAL.
- CABLE CLAMP: STEEL, NICKEL PLATE.
- CABLE CLAMP SCREWS: STEEL, ZINC PLATE WITH CHROMATE SEAL.

2. DIMENSIONS ARE IN INCHES [MILLIMETERS].

		POSITRONIC INDUSTRIES INC. www.connectpositronic.com		FSCM 28198
		PCS SERIES		SCALE: N.T.S. DRAWN BY: YK APPROVED BY: RCW
DECIMAL TOL. ± 0.015 [0.38]		TITLE: PLB1200050		
ANGULAR TOL. $\pm 5^\circ$		DATE: 5-7-02	DRAWING NUMBER: SK5412	REV.: B