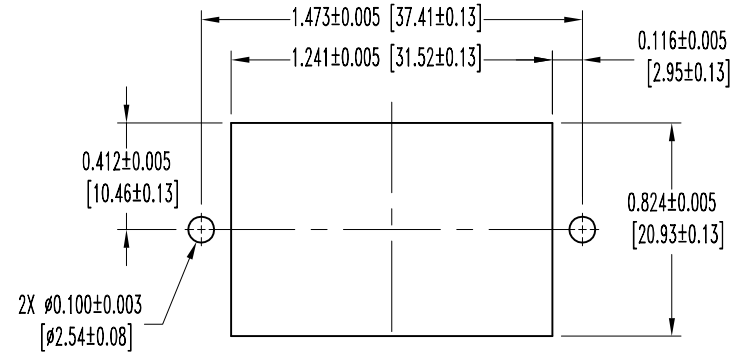
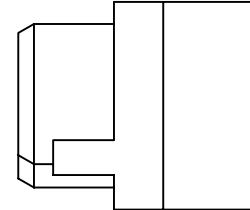
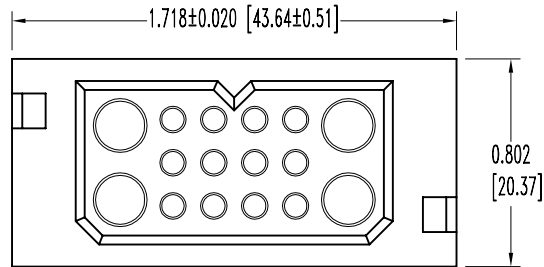


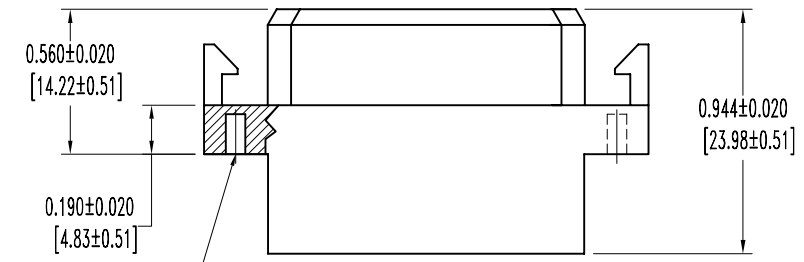
SK7423

POSITRONIC INDUSTRIES BELIEVES THE DATA ON THIS DRAWING TO BE RELIABLE. SINCE THE TECHNICAL INFORMATION IS GIVEN FREE OF CHARGE, THE USER EMPLOYS SUCH INFORMATION AT HIS OWN DISCRETION AND RISK. POSITRONIC INDUSTRIES ASSUMES NO RESPONSIBILITY FOR RESULTS OBTAINED OR DAMAGES INCURRED FROM USE OF SUCH INFORMATION IN WHOLE OR IN PART.

DATE	REV	REVISION RECORD	APP	DR	CK
5-16-06	NC	ECO 25970		COLE	




PANEL CUTOUT



2X ø0.076 [ø1.93]
X 0.155 [3.94] DEEP

- NOTES:
- MATERIALS AND FINISHES:
INSULATOR: GLASS FILLED POLYESTER, UL 94V-0, COLOR BLUE.
 - ELECTRICAL CHARACTERISTICS:
INSULATOR RESISTANCE: 5 G OHMS PER IEC 512-2, TEST 3a, METHOD A.
WORKING VOLTAGE: 300 VAC.
 - WORKING TEMPERATURE: -55°C TO +125°C.
 - DIMENSIONS ARE IN INCHES [MILLIMETERS].

 POSITRONIC INDUSTRIES INC. www.connectpositronic.com		SCALE N.T.S.		DRAWN BY COLE	
DECIMAL TOL. ± 0.015 [0.38]		PCS SERIES		APPROVED BY	
PLC16W4F1000					
DATE 5-16-06		DRAWING NUMBER SK7423		REV. NC	