

SP MAX

POWER & SIGNAL CONNECTORS FOR RUGGED ENVIRONMENTS

- Developed specifically for power and signal management in military, space, satellite, and commercial air applications
- Precision machined shell, available in three sizes, provides EMI/RFI protection
- Combine a multitude of contact sizes in a single connector including #12, #16, #18, and #22 contacts
- Performance compatibility to EN4165 and DO-160



Positronic®
an Amphenol company

THE SCIENCE OF **CERTAINTY®**

M027 rev.A2 25/07

FEATURES

- Liquid crystal polymer (LCP) insulators ensure proper operation from -55°C to 175°C
- Rated up to 35A per contact at 30°C temperature rise
- Integral blind mating allows for up to 2mm of offset
- Machined contacts in crimp, solder, or press-fit termination options
- Slim metal housing allows for heat dissipation and shielding
- Hardware options include angle brackets, boardlocks and jackscrews
- Sequential mating, selective loading, and customized contact positioning helps solve difficult application solutions

APPLICATIONS

- Power and signal I/O
- LRUs for military, space, satellite, and commercial air applications
- Ground-based, air/space transport, and operation in rugged environments (deep space complex and planetary-based communications)
- Battery and solar power distribution and management
- High-wattage switchable power supplies
- Inside-the-box power and signal distribution

TECH SPECS

GENERAL

Part Number Prefix	SM
Performance Level	Mil/Aero Spaceflight
Qualifications	FAR-25-853(a) FAR-25-855(d)
RoHS Compliance	Yes (by default)

MATERIAL AND FINISHES

Insulator	LCP
Insulator Color	Black
Flammability Rating	UL 94V-0
Contact Material	Copper alloy
Contact Plating	Gold flash 0.76µm Au (min) 1.27µm Au (min)
Shell Material	Aluminum

ELECTRICAL

Insulator Resistance	2.5 GΩ	
Proof Voltage (rms)	Up to 2200V	
Working Voltage (rms)	Up to 600V	
Initial Contact Resistance	As low as 0.5 mΩ	
Contact Current Rating at 30°C Temperature Rise	Standard Conductivity	High Conductivity
Size 12	27A	35A
Size 16	15A	21A
Size 18	13A	17A
Size 22	3A	

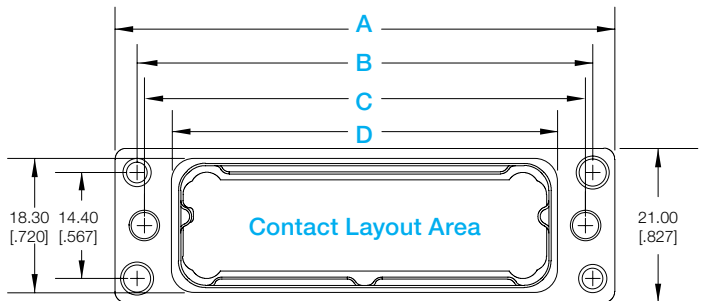
MECHANICAL

Shape	Rectangular
Body Style	Free cable Panel mount
Insulator Construction	One-piece
Locking System	Optional
Contact Style	Fixed Removable
Contact Size	#22 #18 #16 #12
Female Contact Design	Closed entry
Contact Retention Mechanism	Metal clip Press-in
Contact Retention	27N to 67N (6 lbs to 15 lbs)
Contact Termination	Wire PCB
Mating Cycles	500
Blind Mating Allowance	Up to 2mm offset
Shock	EIA 364-27 Condition D
Vibration	Random vibration per EN 60068-2-64 Method B Sine vibration per MIL-DTL-202 Procedure 204

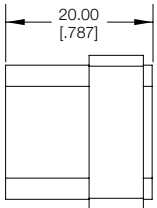
ENVIRONMENTAL

Operating Temperature	-55 to 175°C
-----------------------	--------------

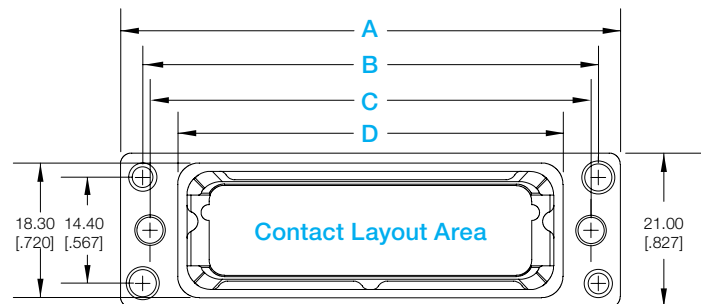
MALE FACE VIEW



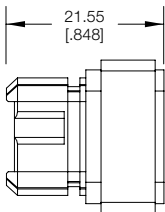
MALE SIDE VIEW



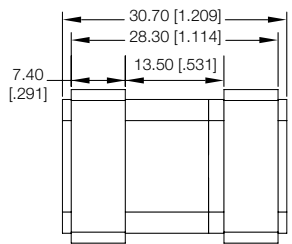
FEMALE FACE VIEW



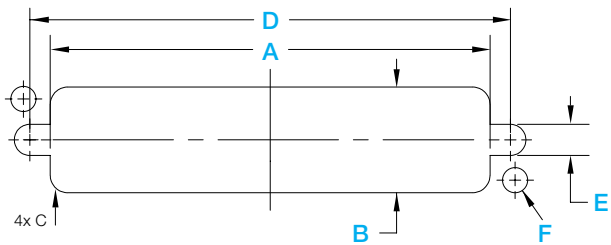
FEMALE SIDE VIEW



MATING VIEW



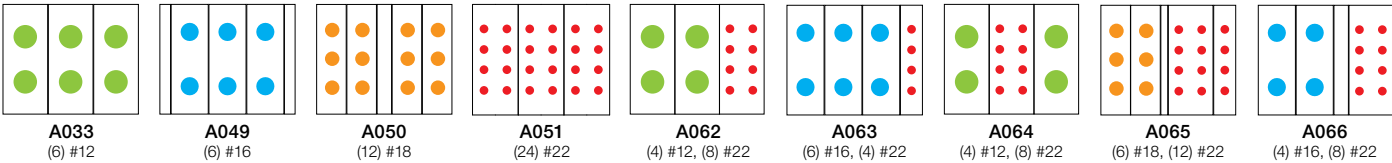
SHELL SIZE	Contact Layout Dimension	A	B	C	D
X	18.00 [1.709]	46.00 [1.811]	40.00 [1.575]	38.00 [1.496]	30.40 [1.197]
S	40.00 [1.574]	68.00 [2.678]	62.00 [2.441]	60.00 [2.363]	52.40 [2.063]
M	65.00 [2.362]	93.00 [3.662]	87.00 [3.426]	85.00 [3.347]	77.40 [3.048]



SHELL SIZE	A	B	C	D	E	F
X	30.80 [1.213]			38.00 [1.496]		
S	52.80 [2.078]	18.70 [1.736]	3.10 [1.22]	60.00 [2.362]	6.50 [1.236]	4.50 [1.77]
M	77.80 [3.063]			85.00 [3.346]		

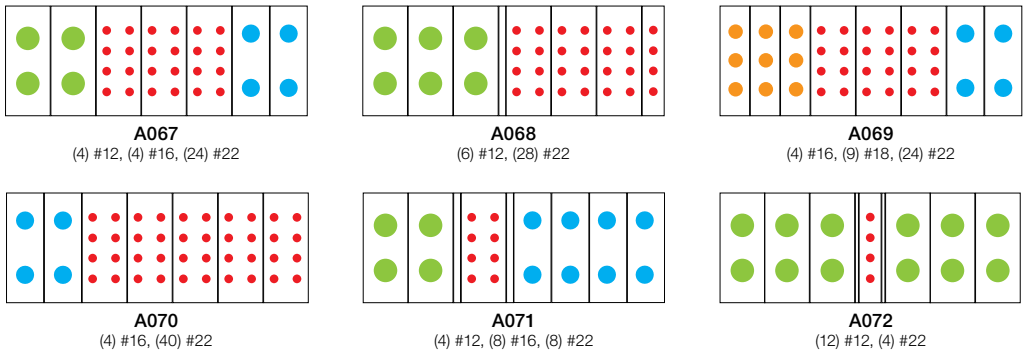
Scale 1:1

Shell Size X



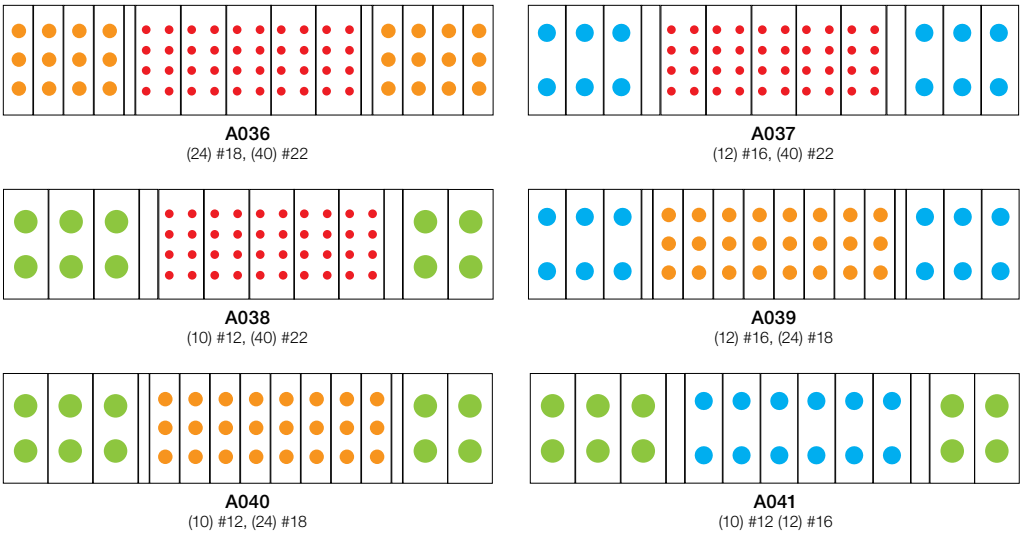
All 'X' modules measure 14.60 [.575] in height and 18.00 [.708] in length

Shell Size S



All 'S' modules measure 14.60 [.575] in height and 40.00 [1.574] in length

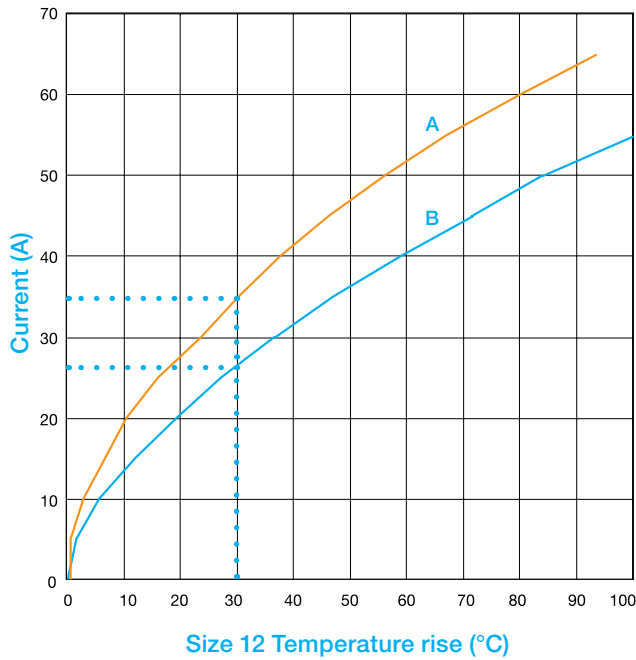
Shell Size M



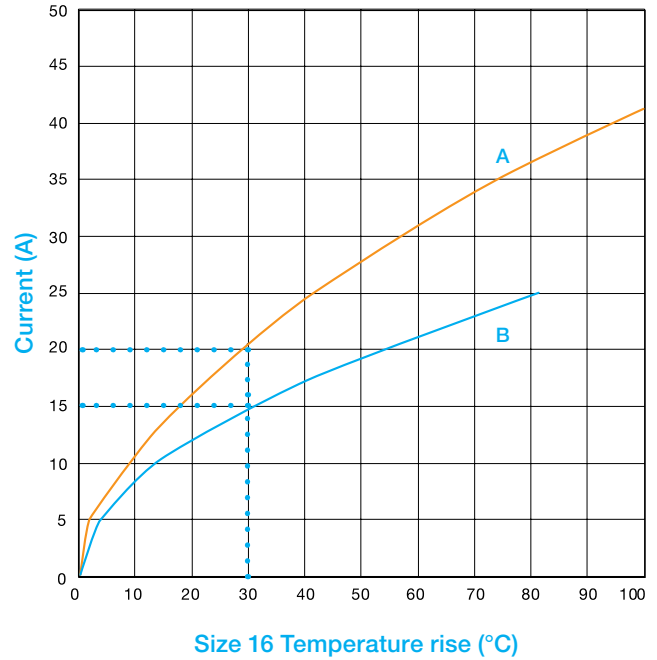
All 'M' modules measure 14.60 [.575] in height and 65.00 [2.560] in length

Contact Size Chart			
#12	#16	#18	#22

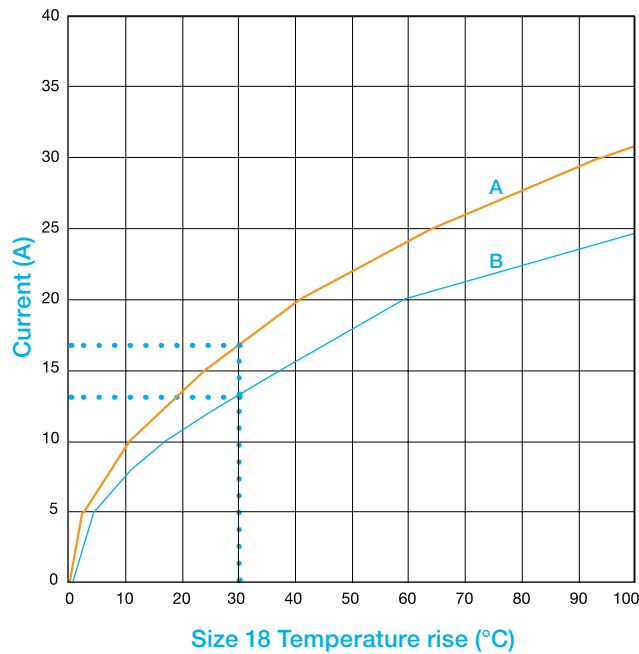
Tested per IEC Publication 60512-3, Test 5a



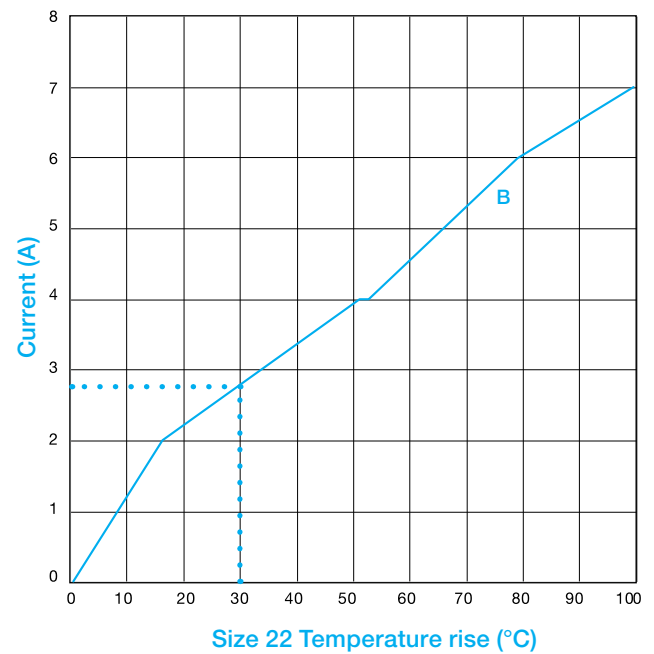
- A** Developed with (6) #12 high conductivity contacts
- B** Developed with (6) #12 standard conductivity contacts



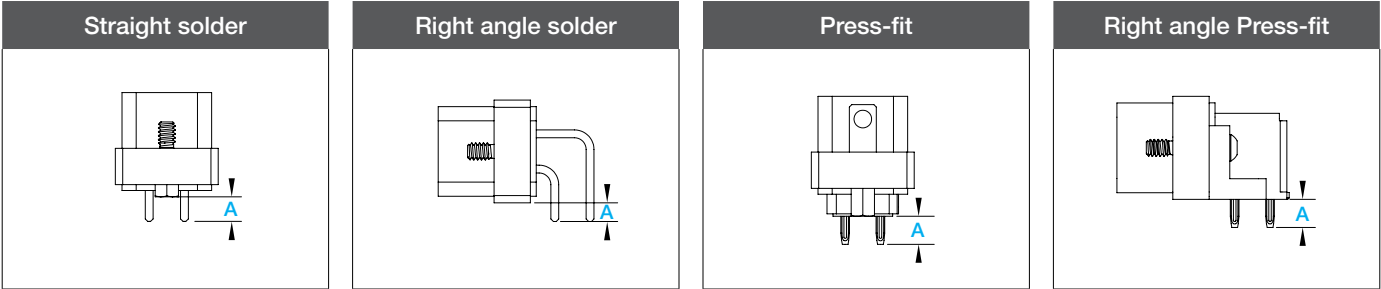
- A** Developed with (6) #16 high conductivity contacts
- B** Developed with (6) #16 standard conductivity contacts



- A** Developed with (6) #18 high conductivity contacts
- B** Developed with (6) #18 standard conductivity contacts



- B** Developed with (6) #22 standard conductivity contacts



Code	Termination type	A
30	Straight solder	5.00 [.197]
38	Straight solder, high conductivity power contacts (from size 18)	5.00 [.197]
40	Right angle solder	5.00 [.197]
48	Right angle solder, high conductivity power contacts (from size 18)	5.00 [.197]
63	Right angle press-fit, for use with PCBs >= 2.29 [.090]	5.72 [.225]
93	Straight press-fit, for use with PCBs >= 2.29 [.090]	5.72 [.225]

Size	Standard Conductivity Female	High Conductivity Female	Stranded AWG [mm²]
12	FC1210P2/AA	FC1210P2S/AA	#10 [6.0]
12	FC1212P2/AA	FC1212P2S/AA	#12 [4.0]
16	FC112P2/AA-PA907	FC112P2S/AA-PA907	#12 [4.0]
16	FC114P2/AA-PA907		#14-16 [2.5-1.5]
16	FC116P2/AA-PA907		#16-18-20 [1.5-1.0-0.5]
16	FC120P2/AA-PA907		#20-22-24 [0.5-0.3-0.25]
18	FC1816P2/AA	FC1816P2S/AA	#16-18 [1.5-1.0]
18	FC1820P2/AA	FC1820P2S/AA	#20 [0.5]
22	FC422P9/AA		#22-26 [0.3-0.12]

PLATING
Standard finish Gold flash over nickel plate.
Optional finishes 0.76µm Au (min) over 0.76µm Ni (min) over Cu by adding "-14" suffix onto part number.
Example: FC1212P2/AA-14
1.27µm Au (min) over 1.52µm Ni (min) over Cu by adding "-15" suffix onto part number.
Example: FC1212P2/AA-15

All SP Max products are RoHS-compliant by default.

<p>Series</p> <p>SM SP MAX</p> <p>Shell Sizes</p> <p>X 18 mm of active insulator S 40 mm of active insulator M 65 mm of active insulator</p> <p>Contact Layout</p> <p>Axxx Select from layout codes on page 4</p> <p>Contact Gender</p> <p>M Male pin S Female socket R Female socket with sealing ring C Female socket with conductive sealing ring</p> <p>Shell Options</p> <p>A Electroless nickel B Electroless nickel, non-conductive panel gasket C Electroless nickel, conductive panel gasket D^{*2} Electroless nickel PTFE E^{*2} Electroless nickel PTFE, non-conductive panel gasket F^{*2} Electroless nickel PTFE, conductive panel gasket</p> <p>Termination Type</p> <p>00^{*1} Wire, order contacts separately 30 Straight solder 38 Straight solder, high conductivity power contacts (from size 18) 40 Right angle solder 48 Right angle solder, high conductivity power contacts (from size 18) 63^{*3} Right angle press-fit, for use with PCBs >= 2.29 [.090] 93 Straight press-fit, for use with PCBs >= 2.29 [.090]</p>	<p>SM X A049 - M A 30 C - T7 S1</p> <p>Termination Side Accessories</p> <p>XX None B1 Angle brackets, through holes B2 Angle brackets, threaded holes B3 Angle brackets, integrated boardlocks S1 Standoffs, 4-40 S2 Standoffs, boardlocks</p> <p>Mating Side Accessories</p> <p>XX None T7 Fixed male jackscrews E7^{*4} Rotating female jackposts K1 Keying guide, 2x male pins, for use with K2 K2 Keying guide, 2x female sockets, for use with K1 K3 Keying guide, 1x male pin (left), 1x female socket (right), for use with K4 K4 Keying guide, 1x female socket (left), 1x male pin (right), for use with K3</p> <p>Contact Plating</p> <p>X No contacts A Gold flash, Au over 0.51µm Ni (min) over Cu C 0.76µm Au (min) over 0.76µm Ni (min) over Cu D 1.27µm Au (min) over 1.52µm Ni (min) over Cu E 1.27µm Au (min) over Cu</p>
---	---

^{*1} Available on female connector only. Contact Technical Sales for availability of crimp contacts on male connector.

^{*2} Mating force reduces when PTFE plating selected

^{*3} Contact Technical Sales for availability

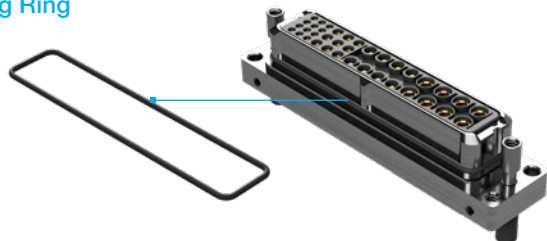
^{*4} E7 is only compatible to the code XX in Termination Side Accessories.

COMING SOON!

- MACHINED BACKSHELL
- MALE CRIMP CONNECTOR
- QUICK LOCKING SYSTEM
- FIBER OPTIC MT FERRULE



Sealing Ring

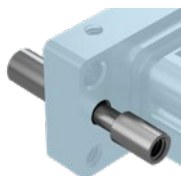


Conductive or non-conductive perimeter sealing ring for female connectors using code 'R' and 'C' in Contact Gender step

Gasket



Conductive or non-conductive panel gasket for shell using code 'B', 'C', 'E', 'F' in Shell Options step



E7^{*1}

Rotating female jackposts



T7

Fixed male jackscrews

^{*1} E7 is only compatible to the code XX in Termination Side Accessories.



K1

Keying guide, 2x male pins, for use with K2

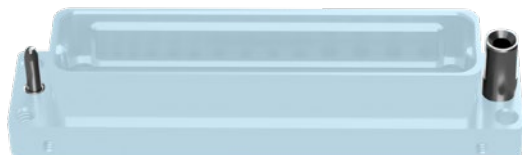


K2

Keying guide, 2x female sockets, for use with K1

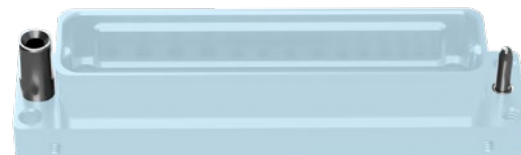
K3

Keying guide, 1x male pin (left), 1x female socket (right), for use with K4



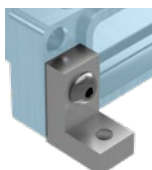
K4

Keying guide, 1x female socket (left), 1x male pin (right), for use with K3



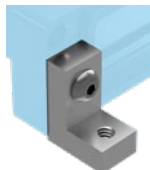
B1

Angle brackets, through holes



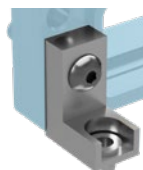
B2

Angle brackets, threaded holes



B3

Angle brackets, integrated boardlocks



S1

Standoffs, 4-40



S2

Standoffs, boardlocks



Positronic | Americas

1325 N Eldon Ave
Springfield MO 65803 USA
+1 800 641 4054
info@connectpositronic.com

Positronic | Europe

46 route d'Engachies
F-32020 Auch Cedex 9 France
+33 5 6263 4491
contact@connectpositronic.com

Positronic | Asia

3014A Ubi Road 1 #07-01
Singapore 408703
+65 6842 1419
singapore@connectpositronic.com

Sales Offices

Positronic has local sales representation all over the world.

For the nearest sales office visit
www.connectpositronic.com/sales