

# PRECISION MACHINED ONE-PIECE BANDED BACKSHELLS

LIGHTWEIGHT ALUMINUM

X\* SERIES, FOR USE WITH D-SUB CONNECTORS, INCLUDING MACH-D



## FEATURES

- Suitable with machined and stamped shells for standard, high, and mixed density D-Sub connectors, including the Mach-D Series
- Available in sizes 1 through 6
- Banded elliptical entry, slotted, knurled
- Top and top low-profile, front, 45° and 90° side entry
- Rotating or fixed jackscrews
- Spacious interior
- One-piece construction
- Metal backshell offers EMI protection
- Suitable for robust use
- Customizable

## TECH SPECS

Performance Level	Mil/Aero / Spaceflight / Industrial
RoHS Compliance	Compliant when /AA suffix is applied

MATERIAL AND FINISHES	
Material	Aluminum; aluminum with electroless nickel plate; aluminum with yellow anodize; aluminum with gold plate; aluminum with chemical conversion coating.
Hardware	Stainless steel passivated; brass with 1.27µm min. gold plate.

MECHANICAL	
Cable Entry	Top; 45° side; 90° side; front
Locking System	Jackscrews

ENVIRONMENTAL	
Operating Temperature	-55 to 125°C



**Positronic®**  
an Amphenol company

THE SCIENCE OF **CERTAINTY®**

M040 25/07

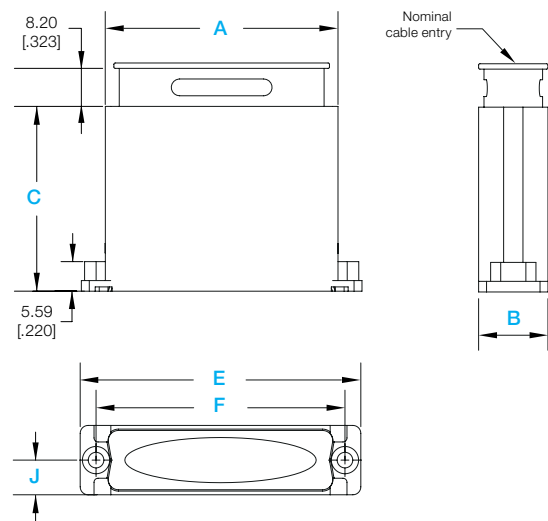
## LIGHTWEIGHT ALUMINUM BACKSHELLS

For the sake of brevity, only basic dimensions are shown here. Additional dimensional detail is available in the respective product drawings.

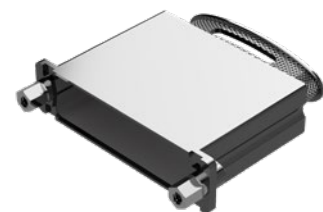
For use with code E or T2

### XP

Backshell, banded, aluminum, top entry



XP backshell shown with E option



XP backshell shown with T2 option

Dimensions are in millimeters [inches]

PART NUMBER	Shell Size	A	B	C	E	F	G Cable Entry <sup>*2</sup>	J	Total Mass <sup>*3</sup>
D9000XPN <sup>†</sup> E0 D9000XPN <sup>†</sup> T20	1	21.97 [.865]	13.11 [.516]	34.93 [1.375]	30.81 [1.213]	24.99 [.984]	14.12 X 8.53 [556 X .336]	6.55 [.258]	8.1 grams
D15000XPN <sup>†</sup> E0 D15000XPN <sup>†</sup> T20	2	30.30 [1.193]	13.11 [.516]	34.93 [1.375]	39.14 [1.541]	33.32 [1.312]	22.45 X 8.53 [.884 X .336]	6.55 [.258]	10.1 grams
D25000XPN <sup>†</sup> E0 D25000XPN <sup>†</sup> T20	3	43.97 [1.731]	13.11 [.516]	34.93 [1.375]	53.04 [2.088]	47.04 [1.852]	36.17 X 8.53 [1.424 X .336]	6.55 [.258]	13.4 grams
D37000XPN <sup>†</sup> E0 D37000XPN <sup>†</sup> T20	4	60.43 [2.379]	13.11 [.516]	34.93 [1.375]	69.32 [2.729]	63.50 [2.500]	52.63 X 8.53 [2.072 X .336]	6.55 [.258]	17.6 grams
D50000XPN <sup>†</sup> E0 D50000XPN <sup>†</sup> T20	5	58.04 [2.285]	16.03 [.631]	34.93 [1.375]	66.93 [2.635]	61.11 [2.406]	50.24 X 11.48 [1.978 X .448]	8.01 [.316]	18.2 grams
D104000XPN <sup>†</sup> E0 D104000XPN <sup>†</sup> T20	6	60.43 [2.379]	17.60 [.693]	34.93 [1.375]	69.32 [2.729]	63.50 [2.500]	52.63 X 12.95 [2.072 X .510]	8.80 [.347]	18.4 grams

<sup>\*1</sup> For additional 'Material & Finish Options', replace 'N' with desired 'Code' from Create A Part on page 7.

<sup>\*2</sup> Custom cable entry is available. Contact Technical Sales for more information.

<sup>\*3</sup> Total Mass shown is for D\*000XPNT20 configuration. For Total Mass of E jackscrew option, add 1.7 grams to the listed value.

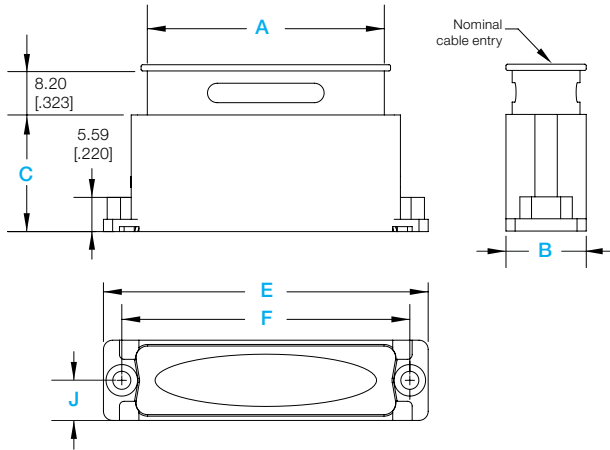
## LIGHTWEIGHT ALUMINUM BACKSHELLS

For the sake of brevity, only basic dimensions are shown here. Additional dimensional detail is available in the respective product drawings.

### XW

Backshell, banded, aluminum, top entry, low profile

The low-profile design of the XW backshell may limit compatibility with certain connector configurations.



For use with code E or T2



XW backshell shown with E option



XW backshell shown with T2 option

Dimensions are in millimeters [inches]

PART NUMBER	Shell Size	A	B	C	E	F	G Cable Entry <sup>*2</sup>	J	Total Mass <sup>*3</sup>
D9000XWN <sup>*1</sup> E0 D9000XWN <sup>*1</sup> T20	1	21.97 [.865]	13.11 [.516]	19.05 [.750]	30.81 [1.213]	24.99 [.984]	14.12 X 8.53 [556 X .336]	6.55 [.258]	5.5 grams
D15000XWN <sup>*1</sup> E0 D15000XWN <sup>*1</sup> T20	2	30.30 [1.193]	13.11 [.516]	19.05 [.750]	39.14 [1.541]	33.32 [1.312]	22.45 X 8.53 [884 X .336]	6.55 [.258]	7.6 grams
D25000XWN <sup>*1</sup> E0 D25000XWN <sup>*1</sup> T20	3	43.97 [1.731]	13.11 [.516]	19.05 [.750]	53.04 [2.088]	47.04 [1.852]	36.17 X 8.53 [1.424 X .336]	6.55 [.258]	8.9 grams
D37000XWN <sup>*1</sup> E0 D37000XWN <sup>*1</sup> T20	4	60.43 [2.379]	13.11 [.516]	19.05 [.750]	69.32 [2.729]	63.50 [2.500]	52.63 X 8.53 [2.072 X .336]	6.55 [.258]	11.8 grams
D50000XWN <sup>*1</sup> E0 D50000XWN <sup>*1</sup> T20	5	58.04 [2.285]	16.03 [.631]	19.05 [.750]	66.93 [2.635]	61.11 [2.406]	50.24 X 11.48 [1.978 X .448]	8.01 [.316]	12.2 grams
D104000XWN <sup>*1</sup> E0 D104000XWN <sup>*1</sup> T20	6	60.43 [2.379]	17.60 [.693]	19.05 [.750]	69.32 [2.729]	63.50 [2.500]	52.63 X 12.95 [2.072 X .510]	8.80 [.347]	12.5 grams

<sup>\*1</sup> For additional 'Material & Finish Options', replace 'N' with desired 'Code' from Create A Part on page 7.

<sup>\*2</sup> Custom cable entry is available. Contact Technical Sales for more information.

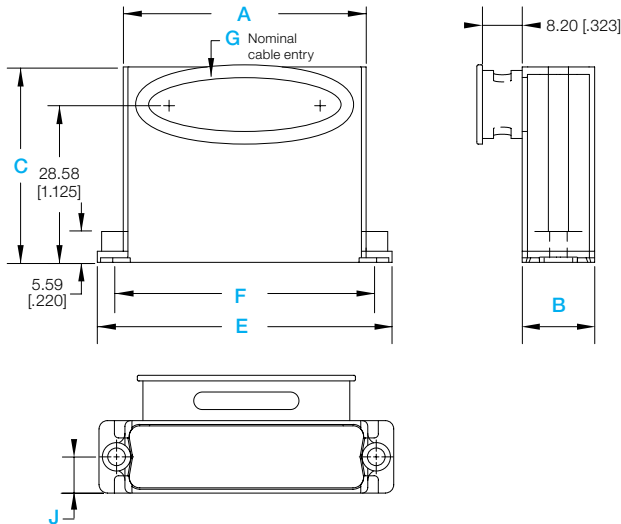
<sup>\*3</sup> Total Mass shown is for D\*000XWNT20 configuration. For Total Mass of E jackscrew option, add 1.7 grams to the listed value.

## LIGHTWEIGHT ALUMINUM BACKSHELLS

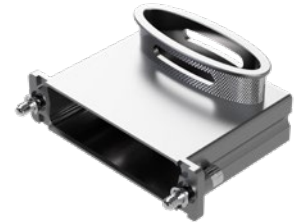
For the sake of brevity, only basic dimensions are shown here. Additional dimensional detail is available in the respective product drawings.

### XR

Backshell, banded, aluminum, front entry



For use with code E or T2



XR backshell shown with E option



XR backshell shown with T2 option

Dimensions are in millimeters [inches]

PART NUMBER	Shell Size	A	B	C	E	F	G Cable Entry <sup>*2</sup>	J	Total Mass <sup>*3</sup>
D9000XR <sup>*1</sup> NE0 D9000XR <sup>*1</sup> T20	1	21.97 [.865]	13.11 [.516]	35.38 [1.393]	31.06 [1.223]	24.99±0.13 [.984±.005]	12.88 X 9.78 [.507 X .385]	6.55 [.258]	8.3 grams
D15000XR <sup>*1</sup> E0 D15000XR <sup>*1</sup> T20	2	30.30 [1.193]	13.11 [.516]	35.38 [1.393]	39.40 [1.551]	33.32±0.13 [1.312±.005]	21.21 X 9.78 [.835 X .385]	6.55 [.258]	10.3 grams
D25000XR <sup>*1</sup> E0 D25000XR <sup>*1</sup> T20	3	43.97 [1.731]	13.11 [.516]	35.38 [1.393]	53.37 [2.101]	47.04±0.13 [1.852±.005]	34.93 X 9.78 [1.375 X .385]	6.55 [.258]	13.7 grams
D37000XR <sup>*1</sup> E0 D37000XR <sup>*1</sup> T20	4	60.43 [2.379]	13.11 [.516]	35.38 [1.393]	69.65 [2.742]	63.50±0.13 [2.500±.005]	51.38 X 9.78 [2.023 X .385]	6.55 [.258]	18.1 grams
D50000XR <sup>*1</sup> E0 D50000XR <sup>*1</sup> T20	5	58.04 [2.285]	16.03 [.631]	36.80 [1.449]	67.26 [2.648]	61.11±0.13 [2.406±.005]	49.00 X 12.62 [1.929 X .497]	8.01 [.316]	19.7 grams
D104000XR <sup>*1</sup> E0 D104000XR <sup>*1</sup> T20	6	60.43 [2.379]	17.60 [.693]	37.59 [1.480]	69.65 [2.742]	63.50±0.13 [2.500±.005]	51.38 X 14.20 [2.023 X .559]	8.80 [.347]	20.0 grams

<sup>\*1</sup> For additional 'Material & Finish Options', replace 'N' with desired 'Code' from Create A Part on page 7.

<sup>\*2</sup> Custom cable entry is available. Contact Technical Sales for more information.

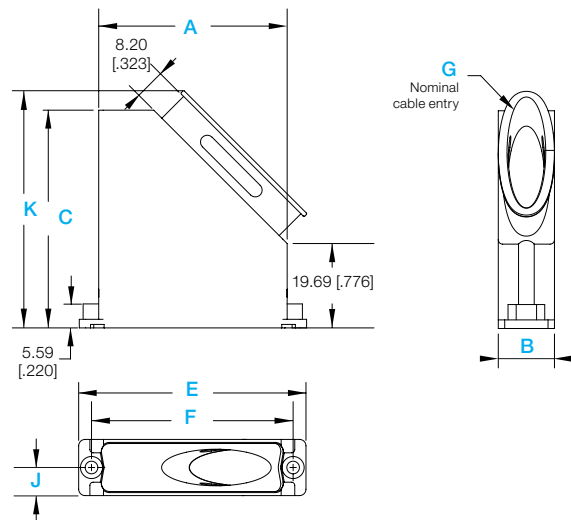
<sup>\*3</sup> Total Mass shown is for D\*000XRNT20 configuration. For Total Mass of E jackscrow option, add 1.7 grams to the listed value.

## LIGHTWEIGHT ALUMINUM BACKSHELLS

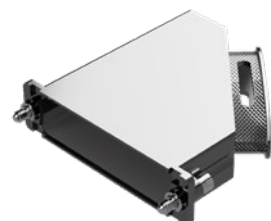
For the sake of brevity, only basic dimensions are shown here. Additional dimensional detail is available in the respective product drawings.

### XK

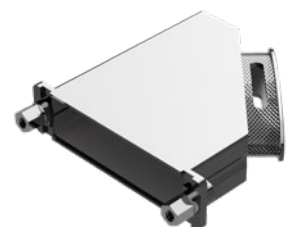
Backshell, banded, aluminum, 45° side entry



For use with code E or T2



XK backshell shown with E option



XK backshell shown with T2 option

Dimensions are in millimeters [inches]

PART NUMBER	Shell Size	A	B	C	E	F	G Cable Entry*2	J	K	Total Mass*3
D9000XKN*E0 D9000XKN*T20	1	21.97 [.865]	13.11 [.516]	35.23 [1.387]	30.81 [1.213]	24.99 [.984]	14.12 X 8.53 [.556 X .336]	6.55 [.258]	39.78 [1.566]	7.5 grams
D15000XKN*E0 D15000XKN*T20	2	30.30 [1.193]	13.11 [.516]	41.12 [1.619]	39.14 [1.541]	33.32 [1.312]	22.45 X 8.53 [.884 X .336]	6.55 [.258]	45.66 [1.798]	10.1 grams
D25000XKN*E0 D25000XKN*T20	3	43.97 [1.731]	13.11 [.516]	50.80 [2.000]	53.04 [2.088]	47.04 [1.852]	36.17 X 8.53 [1.424 X .336]	6.55 [.258]	55.34 [2.179]	15.2 grams
D37000XKN*E0 D37000XKN*T20	4	60.43 [2.379]	13.11 [.516]	62.43 [2.458]	69.32 [2.729]	63.50 [2.500]	52.63 X 8.53 [2.072 X .336]	6.55 [.258]	66.98 [2.637]	22.8 grams
D50000XKN*E0 D50000XKN*T20	5	58.04 [2.285]	16.03 [.631]	60.73 [2.391]	66.93 [2.635]	61.11 [2.406]	50.24 X 11.38 [1.978 X .448]	8.01 [.316]	65.29 [2.570]	23.1 grams
D104000XKN*E0 D104000XKN*T20	6	60.43 [2.379]	17.60 [.693]	62.43 [2.458]	69.32 [2.729]	63.50 [2.500]	52.63 X 12.95 [2.072 X .510]	8.80 [.347]	67.25 [2.648]	24.0 grams

\*1 For additional 'Material & Finish Options', replace 'N' with desired 'Code' from Create A Part on page 7.

\*2 Custom cable entry is available. Contact Technical Sales for more information.

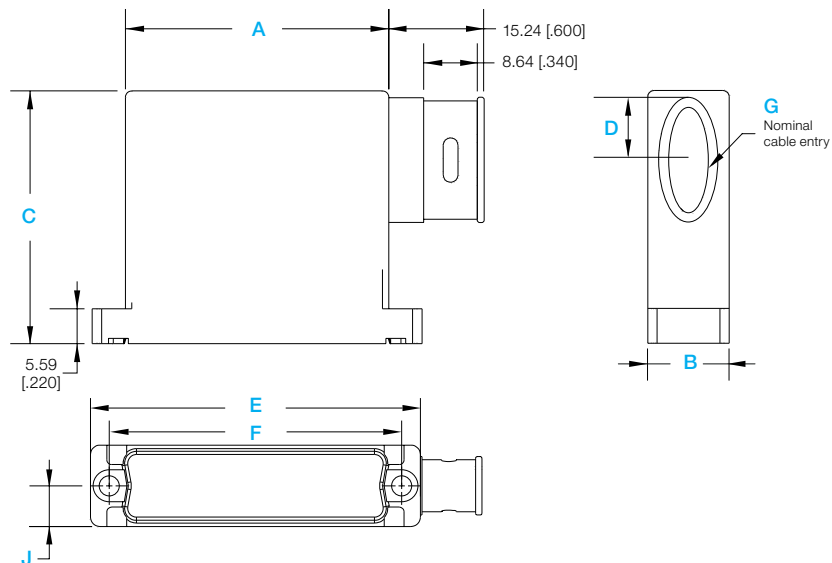
\*3 Total Mass shown is for D\*000XKNT20 configuration. For Total Mass of E-jackscrew option, add 1.7 grams to the listed value.

## LIGHTWEIGHT ALUMINUM BACKSHELLS

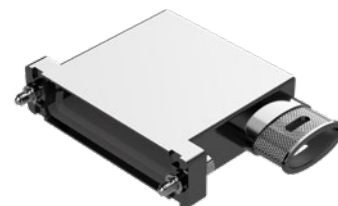
For the sake of brevity, only basic dimensions are shown here. Additional dimensional detail is available in the respective product drawings.

### XS

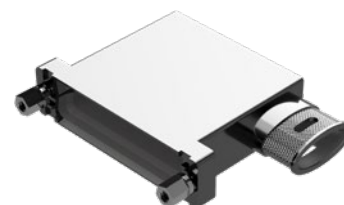
Backshell, banded, aluminum, 90° side entry



For use with code E or T2



XS backshell shown with E option



XS backshell shown with T2 option

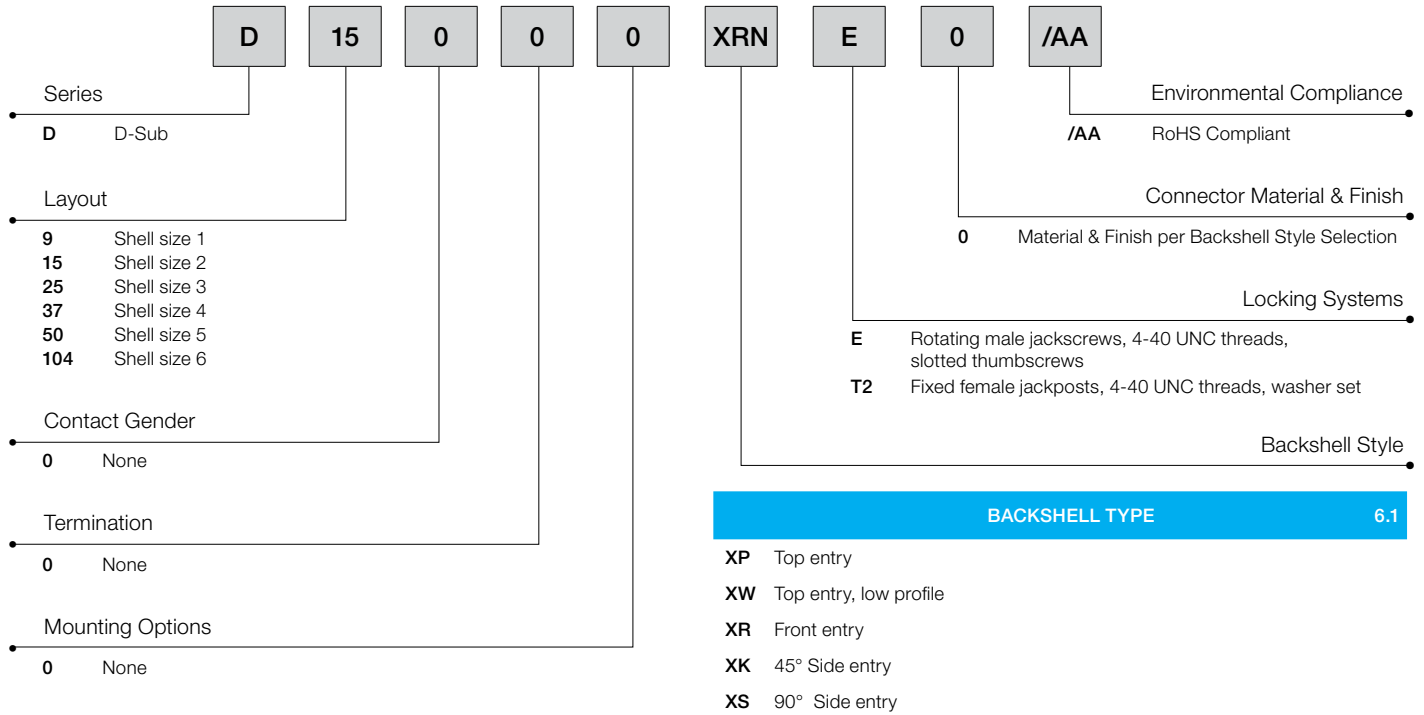
Dimensions are in millimeters [inches]

PART NUMBER	Shell Size	A	B	C	D	E	F	G Cable Entry <sup>*2</sup>	J	Total Mass <sup>*3</sup>
D9000XSN <sup>*1</sup> E0 D9000XSN <sup>*1</sup> T20	1	20.32 [.800]	13.11 [.516]	34.29 [1.350]	7.95 [.313]	30.81 [1.213]	24.99 [.984]	10.67 X 6.35 [.420 X .250]	6.55 [.258]	10.5 grams
D15000XSN <sup>*1</sup> E0 D15000XSN <sup>*1</sup> T20	2	28.65 [1.128]	13.11 [.516]	37.47 [1.475]	9.53 [.375]	39.14 [1.541]	33.32 [1.312]	13.84 X 6.35 [.545 X .250]	6.55 [.258]	14.1 grams
D25000XSN <sup>*1</sup> E0 D25000XSN <sup>*1</sup> T20	3	42.37 [1.668]	13.11 [.516]	40.64 [1.600]	11.13 [.438]	53.04 [2.088]	47.04 [1.852]	17.02 X 6.35 [.670 X .250]	6.55 [.258]	20.0 grams
D37000XSN <sup>*1</sup> E0 D37000XSN <sup>*1</sup> T20	4	58.83 [2.316]	13.11 [.516]	43.82 [1.725]	12.73 [.501]	69.32 [2.729]	63.50 [2.500]	20.19 X 6.35 [.795 X .250]	6.55 [.258]	27.7 grams
D50000XSN <sup>*1</sup> E0 D50000XSN <sup>*1</sup> T20	5	56.44 [2.222]	15.95 [.628]	43.82 [1.725]	12.73 [.501]	66.93 [2.635]	61.11 [2.406]	20.19 X 9.19 [.795 X .362]	7.98 [.314]	28.6 grams
D104000XSN <sup>*1</sup> E0 D104000XSN <sup>*1</sup> T20	6	58.83 [2.316]	17.53 [.690]	46.99 [1.850]	14.30 [.563]	69.32 [2.729]	63.50 [2.500]	23.37 X 10.77 [.920 X .424]	8.76 [.345]	31.4 grams

<sup>\*1</sup> For additional 'Material & Finish Options', replace 'N' with desired 'Code' from Create A Part on page 7.

<sup>\*2</sup> Custom cable entry is available. Contact Technical Sales for more information.

<sup>\*3</sup> Total Mass shown is for D\*000XSNT20 configuration. For Total Mass of E jackscrow option, add 1.7 grams to the listed value.



Contact sales for spaceflight-suitable configurations

### BACKSHELL TYPE

6.1

- XP Top entry
- XW Top entry, low profile
- XR Front entry
- XK 45° Side entry
- XS 90° Side entry

### MATERIAL & FINISH OPTIONS






6.2

Backshell Finish		Hardware Material
<u>Standard Platings</u>		
N	Electroless nickel, low-mag	Stainless steel, passivated
C	No finish	Stainless steel, passivated
<u>Optional Platings</u>		
A	Anodize, yellow	Stainless steel, passivated
G	Gold 0.76µm min.	Brass, 1.27µm min. gold plate
I	Chemical conversion coating	Stainless steel, passivated
L	Electroless nickel, conductive	Stainless steel, passivated

Our backshells are also available as part of connector kits. To include a backshell in a connector kit, insert the appropriate Backshell Series (shown above) into the Backshells & Boardlocks step of a connector part number. Examples follow:

Series	Layout	Contact Gender	Termination	Mounting Option	Backshells & Boardlocks	Locking Systems	Shells	Environmental Compliance	PART NUMBER
RD	15	M	1	0	XWN	E	S	/AA	RD15M10XWNES/AA
DD	44	P	2	0	XRN	E	S	/AA	DD44P20XRNES/AA
CBC	7W2	M	11	0	XPN	T2	0	/AA	CBC7W2M110XPNT20/AA
SDD	26	S	1	0	XKN	E	G	/AA	SDD26S10XKNEG/AA

See [connectpositronic.com](http://connectpositronic.com)  
for all other D-Sub related  
information including:

- ✓ **Footprints** 
- ✓ **Tooling** 
- ✓ **Product updates** 
- ✓ **Detailed dimensions** 
- ✓ **2D/3D drawings** 

All dimensional tolerances are  $\pm 0.38$  [0.015], unless otherwise specified. Dimensions are in millimeters [inches]. All dimensions are subject to change. Product pictures may not be identical in appearance to actual production parts.

Information in this catalog is proprietary to Positronic and its subsidiaries. Positronic believes the data contained herein to be reliable. Since the technical information is given free of charge, the user employs such information at his own discretion and risk. Positronic assumes no responsibility for results obtained or damages incurred from use of such information in whole or in part.

The following trademarks are owned by Positronic Industries, Inc.: Positronic Industries, Inc.®, Positronic®, Connector Excellence®, P+ logo®, PosiBand®, PosiShop®, Optik-D™, and The Science of Certainty®. The color blue as it appears on various connectors is a trademark of Positronic Industries, Inc., Registered in U.S. Patent and Trademark Office.

Products described within this catalog may be protected by one or more of the following US patents:

#4,900,261\* #5,255,580 #5,329,697 #6,260,268  
#6,835,079 #7,115,002 #8,944,697 #9,304,263

\*Patented in Canada, 1992 Other patents pending

**Federal Supply Code for Manufacturers**

Positronic Industries: 28198  
Positronic Industries SAS: FA7Y0  
Positronic Asia PTE LTD: QB952

**Positronic | Americas**

1325 N Eldon Ave  
Springfield MO 65803 USA  
+1 800 641 4054  
[info@connectpositronic.com](mailto:info@connectpositronic.com)

**Positronic | Europe**

46 route d'Engachies  
F-32020 Auch Cedex 9 France  
+33 5 6263 4491  
[contact@connectpositronic.com](mailto:contact@connectpositronic.com)

**Positronic | Asia**

3014A Ubi Rd 1 #07-01  
Singapore 408703  
+65 6842 1419  
[singapore@connectpositronic.com](mailto:singapore@connectpositronic.com)

**Sales Offices**

Positronic has local sales  
representation all over the world.  
For the nearest sales office visit  
[www.connectpositronic.com/sales](http://www.connectpositronic.com/sales)