



Positronic[®]
an Amphenol company



VTOL/DRONE

Vertical Take-Off and Landing (VTOL) aircraft are reshaping the future of mobility. Engineered for short-range urban transport, these advanced platforms offer a cleaner, quieter, and more efficient alternative to traditional flight. As the VTOL industry evolves, it drives innovation across electric propulsion, battery systems, flight control, and lightweight materials, all of which demand highly reliable, high-performance electronic systems.

Interconnect solutions are at the heart of these systems, enabling the safe and efficient transmission of power, data, and signal across subsystems. From battery management and motor controls to avionics and communication modules, VTOL applications rely on rugged, compact, and modular connectors that can perform consistently in high-vibration, thermally dynamic environments. With urban air mobility taking flight, connector technologies play a vital role in advancing safety, performance, and scalability in this transformative aerospace segment.

APPLICATIONS

- Power Distribution Systems
- Battery Management Systems
- Flight Control Systems
- Navigation Systems
- Cabin & Passenger Systems
- Charging Systems
- Ground Support Equipment

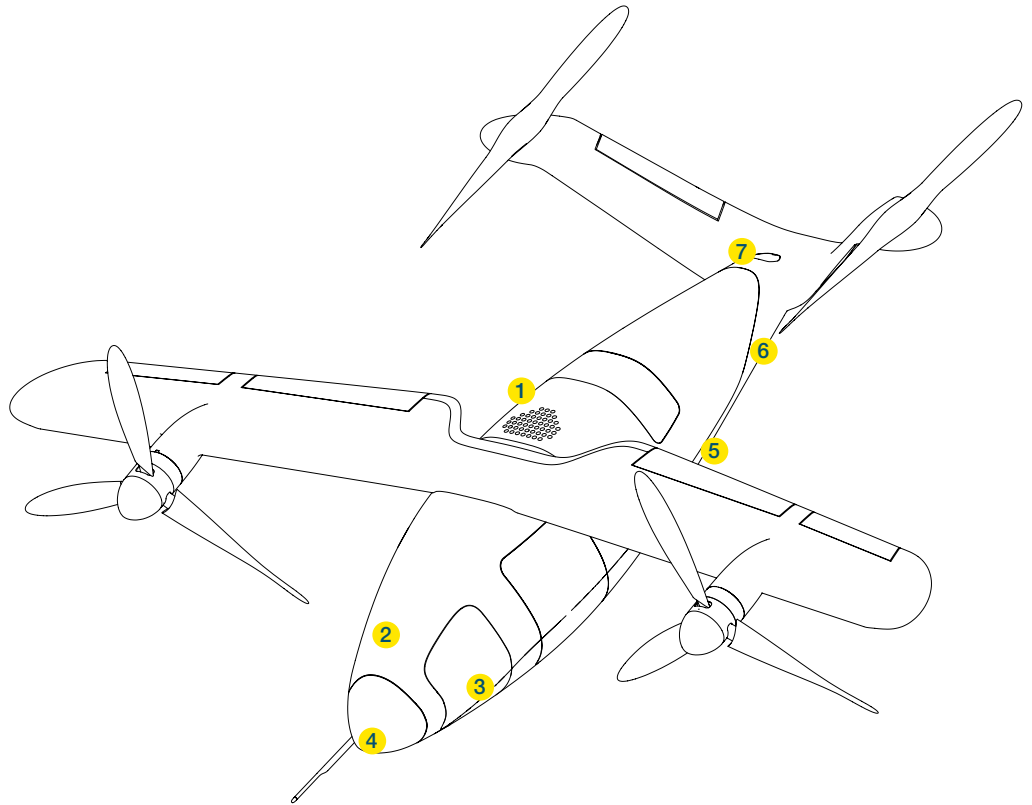
FEATURES & BENEFITS

- Excellent power efficiency ensures minimal power loss and heat build-up
- Non-magnetic connectors preserve the accuracy, calibration, and reliability of sensitive instruments and electronic systems
- Machined contacts provide stable, durable performance during long life cycles
- Superior linear current density allows for more capability in smaller packaging and less weight
- Vibration and shock resistance maintains secure connections
- EMI/RFI shielding protects sensitive electronics from external electromagnetic signals
- Exceptional performance-to-price ratio minimizes total cost of ownership
- A variety of backshells and accessories allow customized solutions to protect and enhance connections for optimal performance

M051 25/06

Urban air mobility platforms require compact, lightweight, and highly reliable interconnect solutions to perform safely in complex airborne environments. These systems support multiple mission-critical subsystems including propulsion, navigation, cabin electronics, and battery management. Connectors within these applications must withstand constant vibration, temperature fluctuations, and EMI while maintaining secure electrical connections for power and data transfer. Built to endure the mechanical and environmental challenges of low-altitude, high-frequency operations, interconnect solutions help ensure the performance, safety, and scalability of next-generation VTOL vehicles.

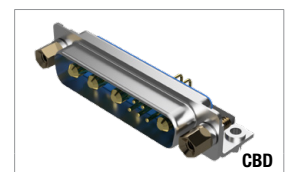
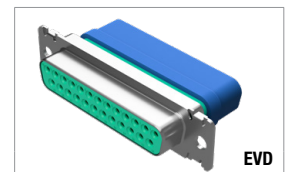
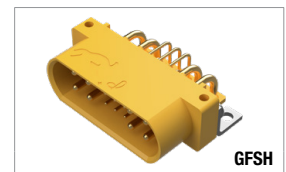
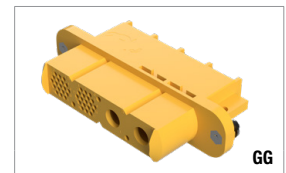
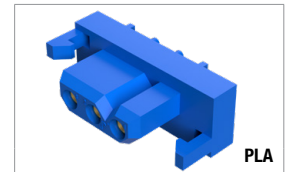
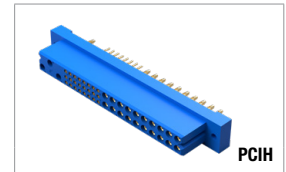
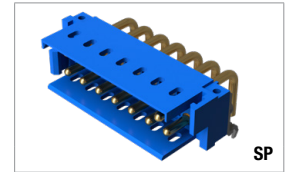
- 1** Power Distribution Systems
- 2** Navigation Systems
- 3** Cabin & Passenger Systems
- 4** Flight Control Systems
- 5** Battery Management Systems
- 6** Charging Systems
- 7** Ground Support Equipment



	1	2	3	4	5	6	7
	Power Distribution Systems	Navigation Systems	Cabin & Passenger Systems	Flight Control Systems	Battery Management Systems	Charging Systems	Ground Support Equipment
Combo-D			•		•	•	•
Compact Power							•
Environmental-D	•	•		•			•
Goldfish		•	•				•
Great Golden						•	•
Low-Profile Scorpion	•		•	•	•		•
Power Connection						•	•
Scorpion	•		•	•	•	•	•

* Applications listed are common use cases and not all-inclusive. For additional guidance, please contact Positronic Technical Sales.

FEATURE	POWER & HYBRID							D-SUB			
	PLA PLB PLC	PLS	PCIA PCIB PCIC PCIH PCIM	GFSH	GG	SP	LSP	WD	WDD	EVD	CBD
#0 Contacts					•						
#4 Contacts						•					
#8 Contacts					•	•					•
#12 Contacts		•		•	•	•	•				
#16 Contacts	•		•	•	•	•					
#18 Contacts						•					
#20 Contacts				•	•		•	•		•	•
#22 Contacts			•			•			•		
Solid machined contacts	•	•	•	•	•	•	•	•	•	•	•
Power and signal in a single connector			•	•	•	•	•				•
Modular connector with expandable envelope						•	•				
Configurable layout					•	•	•				
Integral blind mating				•	•	•	•				
IP-rated								•	•	•	
Metal shell								•	•	•	•
High voltage						•	•				•
UL approved	•	•	•	•		•		•	•	•	•
Wire termination	•	•	•	•	•	•	•	•	•	•	•
PCB termination	•	•	•	•		•	•	•	•		•
Press-fit PCB contacts	•		•	•		•	•				•
First mate, last break	•	•	•	•		•	•				
Venting						•	•				
Panel mount	•	•	•	•	•	•	•	•	•	•	•
Free cable	•	•	•	•	•	•	•			•	•



Positronic | Americas

1325 N Eldon Ave
Springfield MO 65803 USA
+1 800 641 4054
info@connectpositronic.com

Positronic | Europe

46 route d'Engachies
F-32020 Auch Cedex 9 France
+33 5 6263 4491
contact@connectpositronic.com

Positronic | Asia

3014A Ubi Rd 1 #07-01
Singapore 408703
+65 6842 1419
singapore@connectpositronic.com

Sales Offices

Positronic has local sales representation all over the world. For the nearest sales office visit www.connectpositronic.com/sales