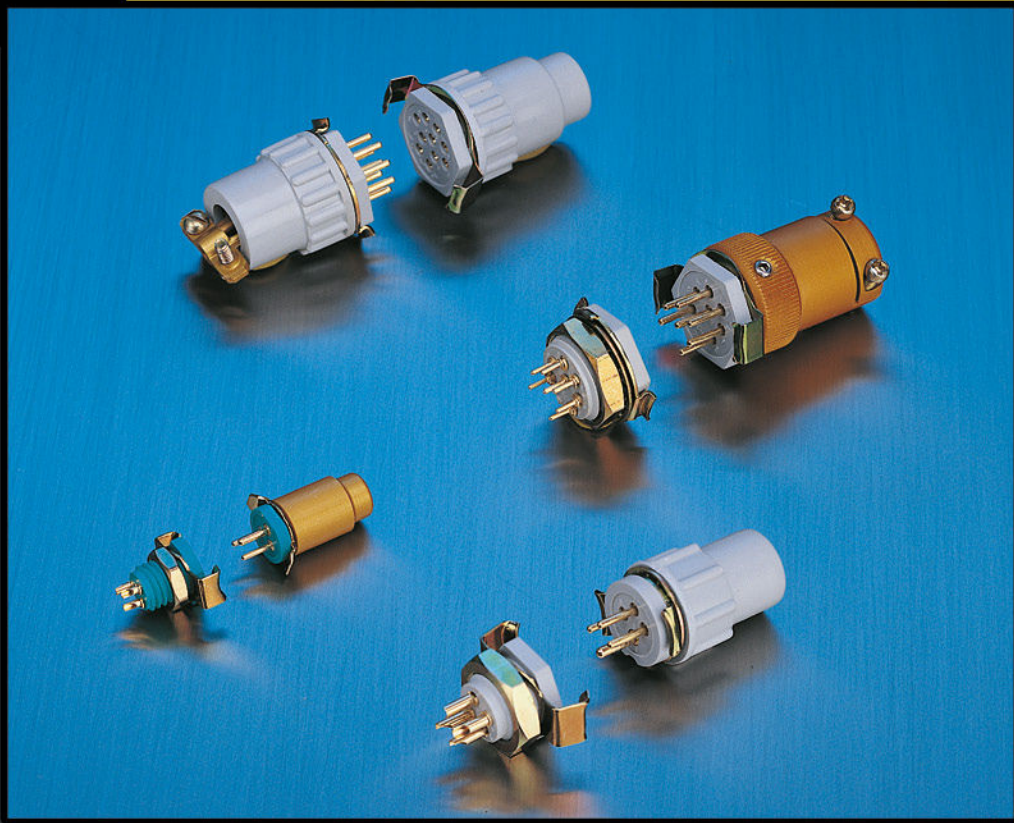




Positronic®
an Amphenol company

MINIATURE CIRCLE HEX CONNECTORS



Featuring High Performance,
Lightweight, Composite Construction

Connector Excellence®

Positronic Provides Complete Capability

Experience

- Founded in **1966**
- **Involvement** in the development of international connector specifications through EIA®, IEC and ISO as well as PICMG®.
- Introduction of new and **unique connector products** to the electronics industry.
- Patent holder for many **unique connector features and manufacturing techniques**.
- **Vertically integrated** manufacturing – raw materials to finished connectors.

Technology

- **Expertise** with solid machined contacts provides a variety of high reliability connectors including high current density power connectors.
- Quality Assurance lab is **capable of testing** to IEC, EIA, UL, CUL, military and customer-specified requirements.
- **In-house design and development** of connectors based on market need or individual customer requirements.
- **Internal manufacturing capabilities** include automatic precision contact machining, injection molding, stamping, plating operations and connector assembly.
- **Manufacturing locations** in southwest Missouri, U.S.A. (headquarters); Puerto Rico, France, China, Singapore, and India. Total square footage: 407,441.

Support

- **Quality Systems:** Select locations qualified to ISO 9001, ISO 14001, AS9100, MIL-STD-790 and customer “dock to stock” programs. Applicable products qualified to MIL-DTL-24308, SAE AS39029, DSCC 85039, MIL-DTL-28748, Space D32, GSFC S-311-P-4 and GSFC S-311-P-10.
- Compliance to a variety of international and customer specific **environmental requirements**.
- Large **in-house inventory** of finished connectors. Customer specific **stocking programs**.
- Factory direct **technical sales support** in major cities worldwide.
- **One-on-one customer support** from worldwide factory locations.
- World class **web site**.
- **Value-added solutions** and willingness to **develop custom products** with reasonable price and delivery.

Mission Statement

“To utilize product flexibility and application assistance to present quality interconnect solutions which represent value to customers worldwide.”



Regional Headquarters

Springfield, MO



Auch, France



Singapore



Products described within this catalog may be protected by one or more of the following US patents:

#4,900,261¹ #5,255,580 #5,329,697
#6,260,268 #6,835,079 #7,115,002

¹Patented in Canada, 1992 Other Patents Pending

Positronic Industries' **FEDERAL SUPPLY CODE** (Cage Code)
FOR MANUFACTURERS is **28198**

Unless otherwise specified, **dimensional tolerances** are:

- 1) ± 0.001 inches [0.03 mm] for male contact mating diameters.
- 2) ± 0.003 inches [0.08 mm] for contact termination diameters.
- 3) ± 0.005 inches [0.13 mm] for all other diameters.
- 4) ± 0.015 inches [0.38 mm] for all other dimensions.

POSITRONIC® IS AN ITAR REGISTERED COMPANY

Information in this catalog is proprietary to Positronic and its subsidiaries. Positronic believes the data contained herein to be reliable. Since the technical information is given free of charge, the user employs such information at his own discretion and risk. Positronic Industries assumes no responsibility for results obtained or damages incurred from use of such information in whole or in part.

The following trademarks are registered to Positronic Industries, Inc. in the United States and many other countries: Positronic Industries, Inc.®, Positronic®, Connector Excellence®, P+ logo®, PosiBand®, PosiShop®, Positronic Global Connector Solutions®, Global Connector Solutions®. The color blue as it appears on various connectors is a trademark of Positronic Industries, Inc., Registered in U.S. Patent and Trademark Office.

G H S E R I E S

General Product Information	1
Technical Characteristics	1
Exploded View of Typical Connector Assembly	2
Solder Cup Termination.	3
Straight Solder Printed Board Mount Termination	3
Contact Hole Position Dimensions and Printed Board Mount Contact Hole Patterns	3
Connector Insulator Dimensions.	4
Typical Mating Assemblies	4
Locking Devices	5
Aluminum Hoods.	5
Plastic Hoods	6
Panel Mounting Information	7
Ordering Information	8

L G H S E R I E S

General Product Information	9
Technical Characteristics	9
Solder Cup Termination.	10
Straight Solder Printed Board Mount Termination	10
Contact Hole Position Dimensions and Printed Board Mount Contact Hole Patterns	10
Panel Mounting Information	10
Connector Insulator Dimensions.	11
Ordering Information	11

M G H S E R I E S

General Product Information	12
Technical Characteristics	12
Typical Assemblies	13
Panel Mounting Information	13
Ordering Information	14

POSITRONIC CABLIZED CONNECTORS

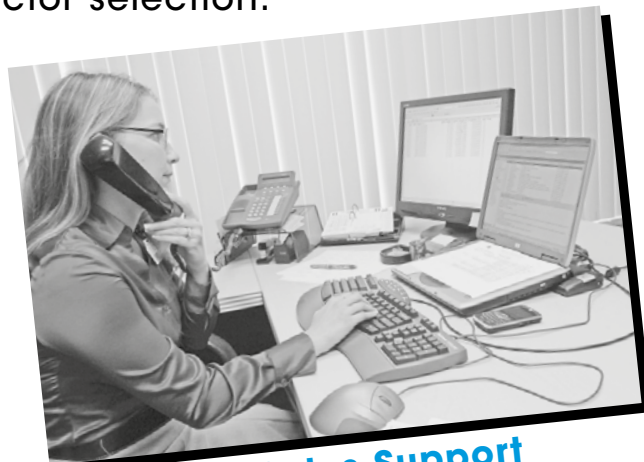
SAVE TIME AND MONEY!

Let Positronic support you by cablizing your
GH / LGH / MGH connector selection.

Cable Assembly Design Support

We work closely with customers to:

1. Design assemblies in accordance with customer specifications.
2. Prepare cablized connector configuration and performance specifications.
3. Design each system in accordance with applicable customer, domestic, and international standards.
4. Define and conduct performance and verification testing.



Technical Sales Support



Engineering Support



Puerto Rico Cable Assembly

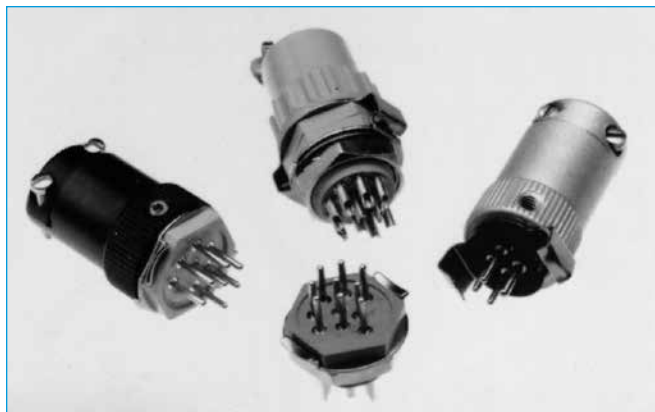


Quality Assurance

FOR MORE DETAILS CONTACT **TECHNICAL SALES**
OR VISIT OUR **WEB SITE** AT:
[HTTP://WWW.CONNECTPOSITRONIC.COM/](http://www.connectpositronic.com/products/47/cableassemblies)
[PRODUCTS/47/CABLEASSEMBLIES](http://www.connectpositronic.com/products/47/cableassemblies)

Size 20 Contacts
High Performance
Construction
5 Insulator Variants
4 through 10 Contacts

UL Recognized
File #E49351



GH series connectors are high reliability, hexagonal connectors offered with solder and straight solder terminations. Contacts have 0.040 inch [1.02 mm] diameters and are rated to 7.5 amperes per contact. Five connector variants, four through ten poles, are offered.

GH series connectors have DAP insulators. A variety of plastic and metal hoods are available, and the locking system is achieved by a lock-ring spring mechanism. Polarization is accomplished by contact layouts or by an oversized contact.

GH series connectors are ideal for use in industrial and instrumentation applications where light weight, miniature, high reliability interconnections are necessary.



For RoHS options
see page 8.

TECHNICAL CHARACTERISTICS

MATERIALS AND FINISHES:

Insulator:	Glass-filled DAP per ASTM-D-5948, Type SDG-F. Grey color is standard.
Contacts:	Precision machined copper alloy.
Contact Plating:	Gold flash over nickel.
Hoods:	Aluminum with yellow or black anodize. Glass-filled DAP.
Lock Rings and Lock Springs:	Copper alloy with zinc plate and chromate seal.

MECHANICAL CHARACTERISTICS:

Fixed Contacts:	Size 20 contact, male - 0.040 inch [1.02 mm] diameter. Female contact - open entry is standard. "Closed entry" is available on solder cup contacts for high reliability applications.
Contact Retention in Insulator:	10 lbs. [44.5N], minimum.
Contact Termination:	Solder cup - 0.046 inch [1.17 mm] hole diameter for 20 AWG [0.5 mm ²] wire maximum Straight printed board mount - 0.025 inch [0.64 mm] termination diameter.
Locking Systems:	Friction, lock spring with lock ring.

MECHANICAL CHARACTERISTICS, continued:

Polarization:	0.056 inch [1.42 mm] diameter male contact in position "A" on Size 4 connector. Molding configuration provides polarization on other sizes.
Mechanical Operations:	
Open Entry Contacts:	250 operations per IEC 60512-5.
Closed Entry Contacts:	500 operations per IEC 60512-5.

ELECTRICAL CHARACTERISTICS:

Contact Current Rating:	7.5 amperes, maximum.
Initial Contact Resistance:	0.010 ohms, maximum.
Flash over Voltage:	1,750 VAC (rms).
Test Voltage:	1,200 VAC (rms).
Insulation Resistance:	5 G ohms.
Clearance and Creepage Distance:	0.025 inch [0.64 mm], minimum.
Working Voltage:	600 VAC (rms).

CLIMATIC CHARACTERISTICS:

Temperature Range:	-55°C to +125°C.
Damp Heat, Steady State:	21 days.



Positronic
connectpositronic.com

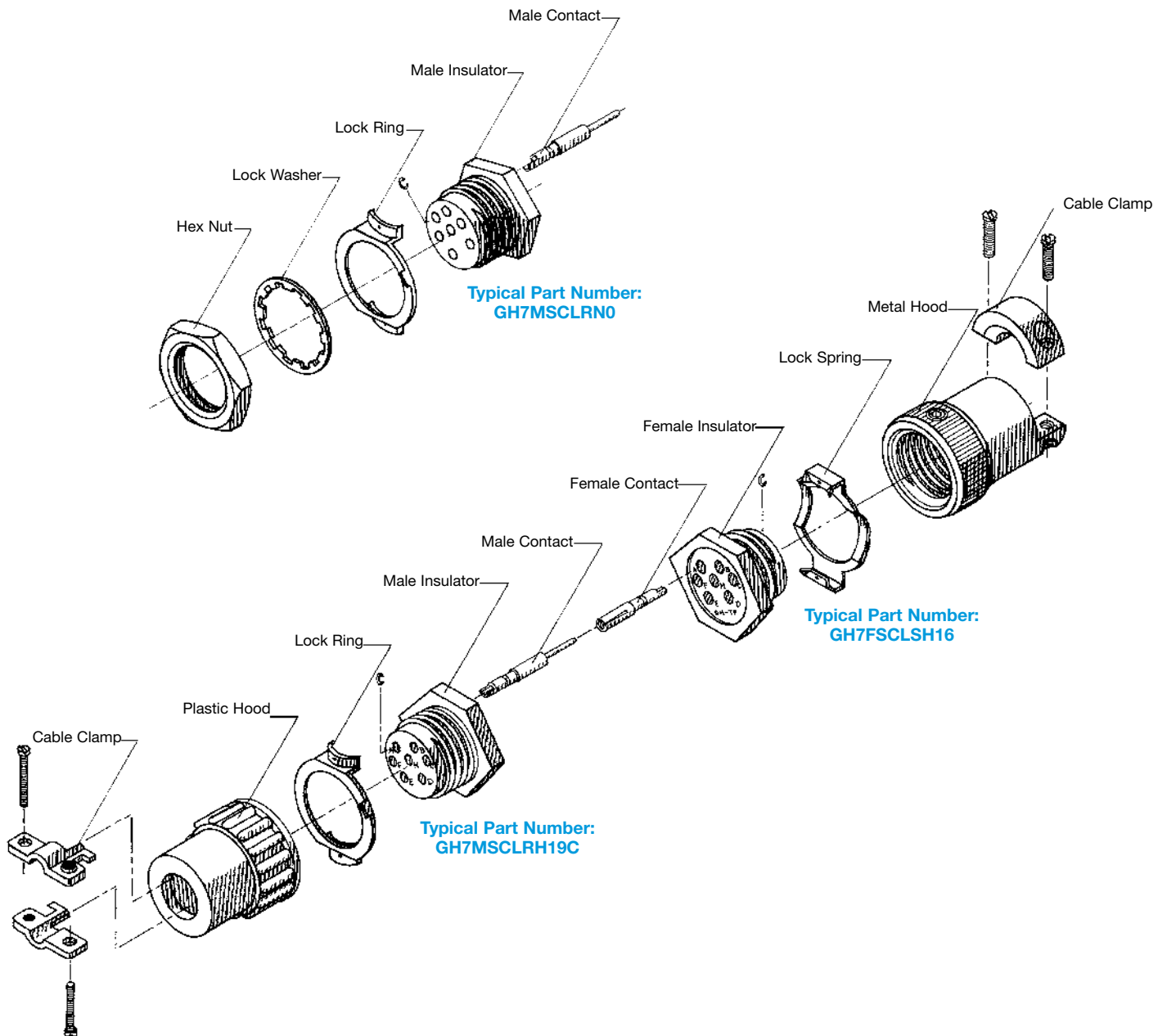
GH SERIES

PROFESSIONAL QUALITY / FIXED CONTACTS

MINIATURE CIRCLE HEX CONNECTORS

Circle
Hex

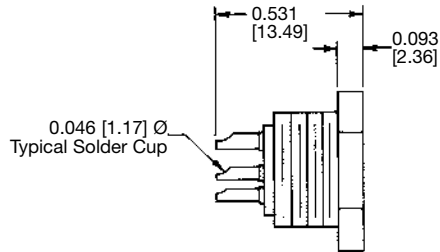
EXPLODED VIEW OF TYPICAL CONNECTOR ASSEMBLY



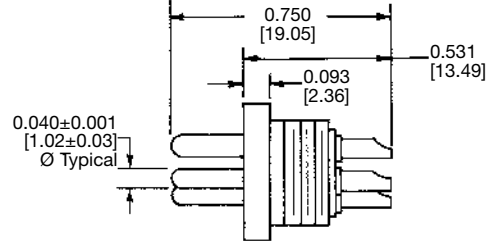
SOLDER CUP TERMINATION

CODE SC ^{*1}

For solder cup contacts, specify contact code "SC" in Step 4 of the ordering information on page 8.



TYPICAL PART NUMBER: GH4FSC00



TYPICAL PART NUMBER: GH4MSC00

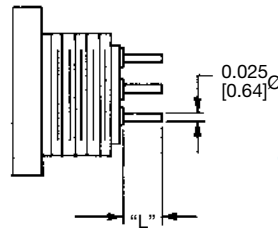
NOTE:

^{*1} GH4 has 0.056±0.001 [1.42±0.03] Ø Pin in "A" position for polarization.

STRAIGHT SOLDER PRINTED BOARD MOUNT TERMINATION

CODE DS3, DS4, DS5 and DS6 ^{*1}

For straight solder contacts, specify contact code (DS3, DS4, DS5, or DS6) for desired length of contact termination in Step 4 of the ordering information on page 8.



TYPICAL PART NUMBER
GH5FDS400

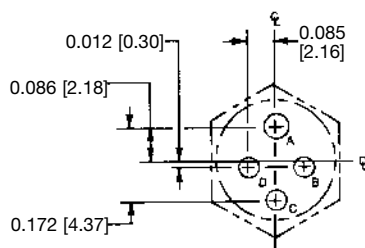
NOTE:

^{*1} Straight solder contacts are not available in GH4 connector.

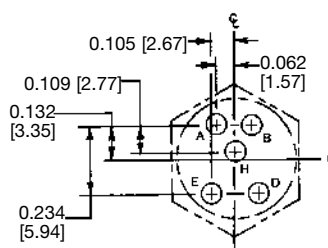
CONTACT CODE	"L"
DS3	0.093 [2.36]
DS4	0.125 [3.18]
DS5	0.156 [3.96]
DS6	0.187 [4.75]

CONTACT HOLE POSITION DIMENSIONS AND PRINTED BOARD MOUNT CONTACT HOLE PATTERN

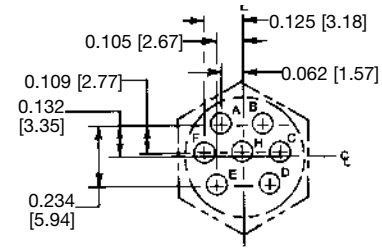
HOLE IDENTIFICATION SHOWN IS FOR MATING FACE OF FEMALE CONNECTOR. USE MIRROR IMAGE FOR MALE CONNECTOR.



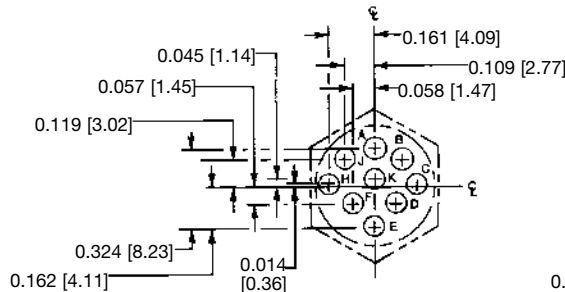
GH4



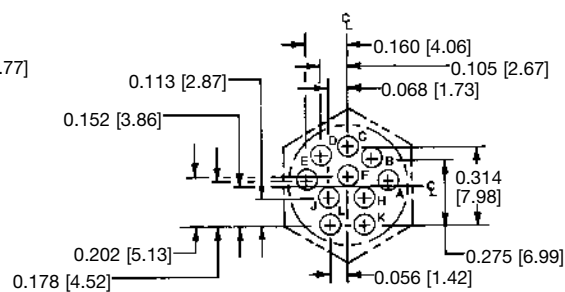
GH5



GH7



GH9



GH10

SUGGESTED PRINTED BOARD HOLE SIZES:

Suggest 0.040 [1.01] Ø holes in printed board for contact terminations.

DIMENSIONS ARE IN INCHES [MILLIMETERS].
ALL DIMENSIONS ARE SUBJECT TO CHANGE.



Positronic
connectpositronic.com

GH SERIES

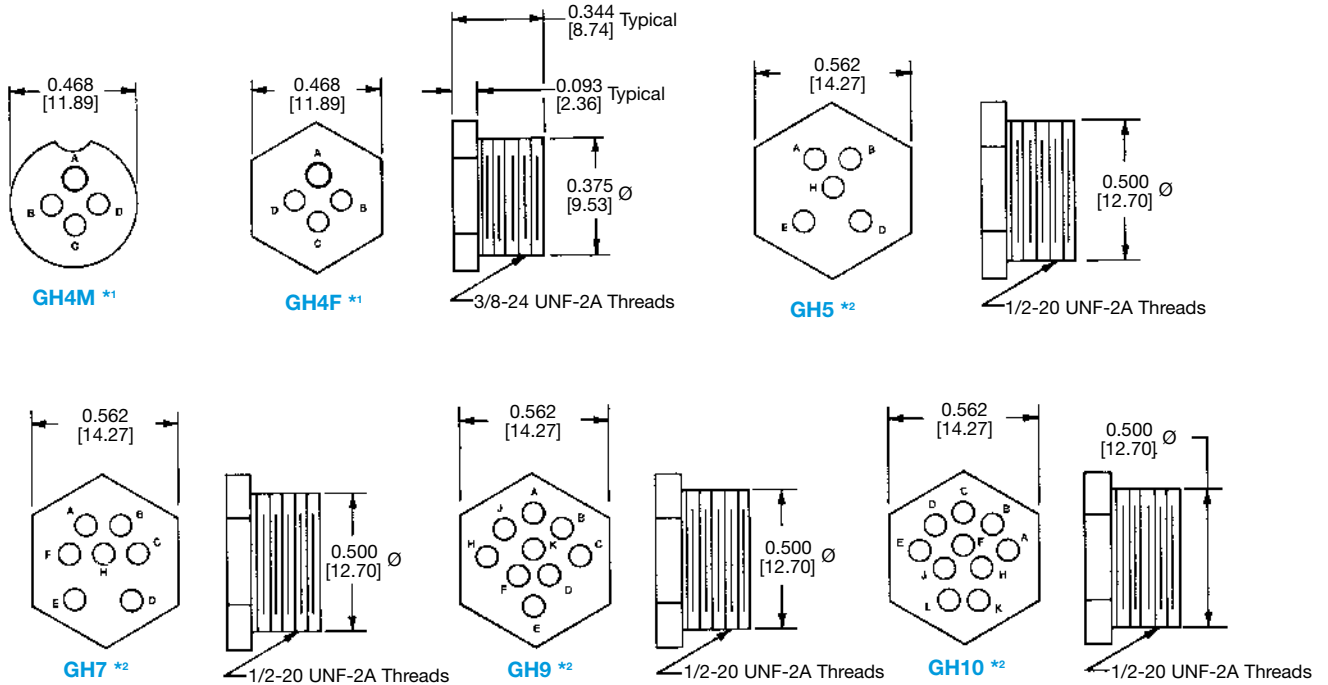
PROFESSIONAL QUALITY / FIXED CONTACTS

MINIATURE CIRCLE HEX CONNECTORS

Circle
Hex

INSULATOR DIMENSIONS

MATING FACE OF FEMALE CONNECTOR FOR SIZES GH 5, 7, 9, AND 10.



NOTES:

*1 Size GH4 uses 0.056 [1.42] Ø pin in position "A" for polarization. For all other sizes, the body design provides polarization.

*2 For Sizes 5 through 10, male and female connector dimensions are typical.

See GH Series Printed Board Hole Patterns, page 3 of this catalog, for contact variant hole positions.

TYPICAL MATING ASSEMBLIES

GH4MSCLSH10C



GH4FSCLRNO

GH5FSCLR19S



GH5MSCLSH19

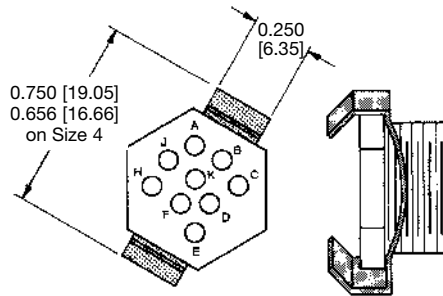
GH10FSCLSH16



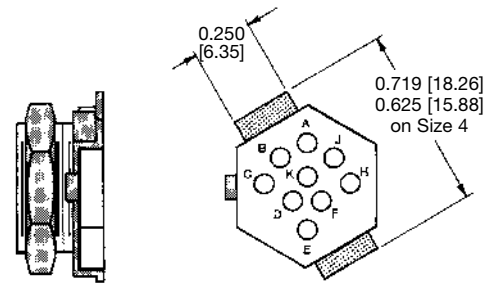
GH10MDS4LRNO

LOCKING DEVICES

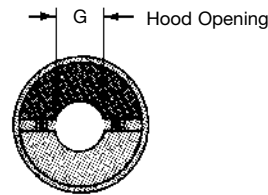
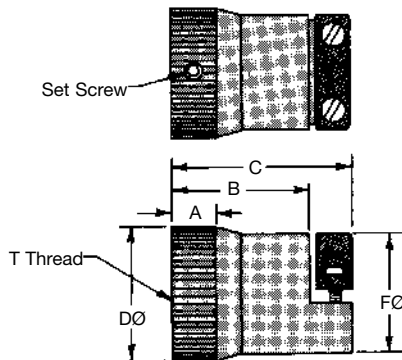
LOCK SPRING CODE LS



LOCK RING AND NUT CODE LRN

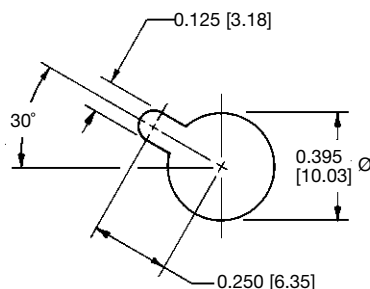


ALUMINUM HOODS CODE H14 and H16

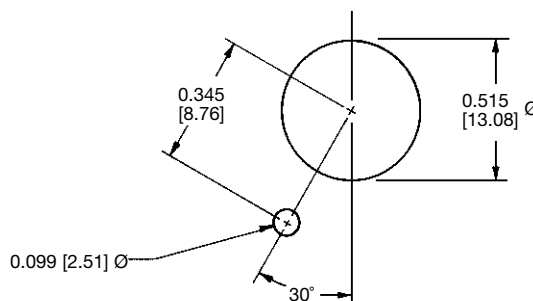


HOOD CODE	CONNECTOR SIZE	A	B	C	D	F	G	T THREAD
H14	GH-4	0.250 [6.35]	0.799 [20.29]	1.062 [26.97]	0.594 [15.09]	0.563 [14.30]	0.218 [5.54]	3/8-24 UNF-2B
H16	GH-5, 7, 9, 10	0.260 [6.60]	0.708 [17.98]	0.938 [23.82]	0.632 [16.05]	0.578 [14.68]	0.250 [6.35]	1/2-20 UNF-2B

PANEL CUT-OUT DIMENSIONS



SIZE 4



SIZES 5, 7, 9, & 10





Positronic
connectpositronic.com

GH SERIES

PROFESSIONAL QUALITY / FIXED CONTACTS

MINIATURE CIRCLE HEX CONNECTORS

Circle
Hex

ORDERING INFORMATION - CODE NUMBERING SYSTEM

Specify Complete Connector By Selecting An Option From Step 1 Through 6

STEP	1	2	3	4	5	6	7	8	9
EXAMPLE	GH	10	M	SC	LRN	0	CE	/AA	

STEP 1 - BASIC SERIES

GH Series

STEP 2 - CONNECTOR VARIANTS

4, 5, 7, 9, 10

STEP 3 - CONNECTOR GENDER

M - Male
F - Female

STEP 4 - CONTACT TERMINATION TYPE

SC - Solder Cup. For "Closed Entry" design, add "CE" in Step 7.
DS3 - Straight Solder, 0.093 [2.36].
DS4 - Straight Solder, 0.125 [3.18].
DS5 - Straight Solder, 0.156 [3.96].
DS6 - Straight Solder, 0.187 [4.75].

NOTE: DS contacts are not available on GH4 connector.

STEP 5 - MOUNTING AND LOCKING ACCESSORIES

LR - Lock Ring.
LS - Lock Spring.
N - Mounting Nut.
W - Lockwasher.
0 - If no mounting or locking accessories are required.

NOTE: When the Lock Ring (LR) or Lock Spring (LS) are ordered with the Mounting Nut (N), a Lockwasher (W) is furnished.

STEP 9 - SPECIAL OPTIONS

**CONTACT TECHNICAL SALES
FOR SPECIAL OPTIONS**

STEP 8 - ENVIRONMENTAL COMPLIANCE OPTIONS

/AA - Compliant per EU Directive
2002/95/EC (RoHS)

NOTE: If compliance to
environmental legislation is not
required, this step will not be used.
Example: GH10MSCLRN0



STEP 7 - ADDITIONAL FEATURES

*1 B - For black anodized aluminum parts.
CE - "Closed Entry" contacts on female solder
contact.

NOTE: Position "A" of GH4 connector is available
as "Open Entry" only.

**SKIP STEP 7 - IF NO ADDITIONAL FEATURES
ARE REQUIRED**

STEP 6 - CABLE ADAPTERS (HOODS)

H10 - Standard plastic hood offered on 4 variant.
H19 - Standard plastic hood offered on 5, 7, 9, and
10 variants.
H10S - Short plastic hood offered on 4 variant.
H19S - Short plastic hood offered on 5, 7, 9, and 10
variants.
H10C - Plastic hood with cable clamps offered on 4
variant.
H19C - Plastic hood with cable clamps offered on 5, 7,
9, and 10 variants.
*1 H14 - Aluminum hood offered on 4 variant.
*1 H16 - Aluminum hood offered on 5, 7, 9, and 10
variants.
0 - If no hoods are required.

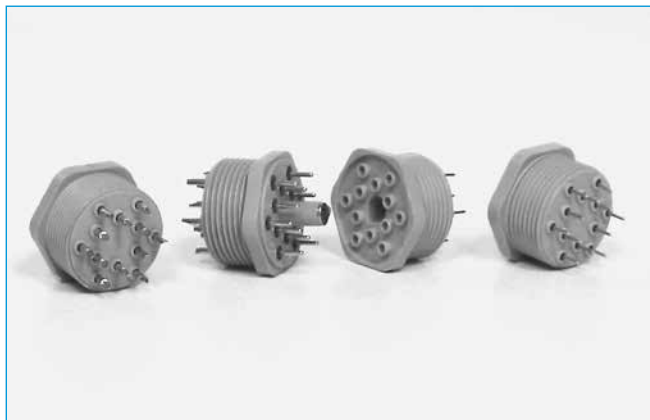
NOTE:

*1 Yellow anodize finish is standard for Aluminum parts.

Size 20 Contacts

High Performance
Construction

12 Contacts



LGH series connectors are high reliability hexagonal connectors offered with wire solder and straight printed board mount contact terminations. Contacts have 0.040 inch [1.02mm] diameters and are rated at 7.5 amperes each.

LGH series connectors have 12 contacts in a high performance connector package that includes a center post which serves to align and polarize the connectors during mating.

LGH series connectors are ideal for use in industrial and instrumentation applications.



For RoHS options
see page 11.

TECHNICAL CHARACTERISTICS

MATERIALS AND FINISHES:

Insulator:	Glass-filled polyester per MIL-M-24519, UL 94V-0. Grey color.
Contacts:	Precision machined copper alloy.
Contact Plating:	Gold flash over nickel.

MECHANICAL CHARACTERISTICS:

Fixed Contacts:	Size 20 contact, male - 0.040 inch [1.02 mm] diameter. Female contact - open entry or closed entry design available.
Contact Retention in Insulator:	9 lbs. [40 N]
Contact Termination:	Solder cup - 0.046 inch [1.17 mm] hole diameter for 20 AWG [0.5 mm] wire maximum. Straight printed board mount - 0.030 inch [0.76 mm] termination diameter.
Polarization:	Center post provides polarization of connector.
Mechanical Operations:	Open entry 250 operations Closed entry 500 operations

ELECTRICAL CHARACTERISTICS:

Contact Current Rating:	7.5 amperes, maximum.
Initial Contact Resistance:	0.008 ohms, maximum.
Clearance and Creepage Distance:	0.039 inch [1.0 mm], minimum.
Working Voltage:	600 VAC (rms).

CLIMATIC CHARACTERISTICS:

Temperature Range:	-55° to +125° C.
Damp Heat, Steady State:	10 days.



Positronic
connectpositronic.com

LGH SERIES

PROFESSIONAL QUALITY / FIXED CONTACTS

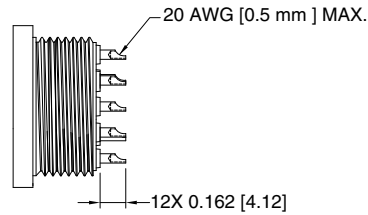
CIRCLE HEX CONNECTORS

Circle
Hex

SOLDER CUP TERMINATION CODE SC

NOTE:

Specify contact code "SC"
in Step 4 of the ordering
information, page 11.

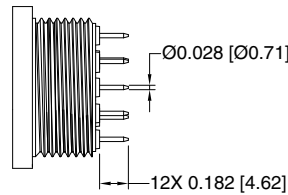


TYPICAL PART NUMBER: LGH12FSC00

STRAIGHT SOLDER PRINTED BOARD MOUNT TERMINATION CODE DS6

NOTE:

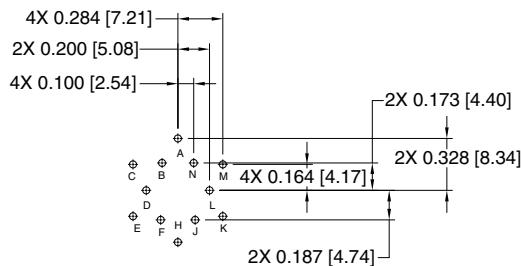
Specify contact code "DS6"
in Step 4 of the ordering in-
formation, page 11.



TYPICAL PART NUMBER: LGH12FDS600

CONTACT HOLE POSITION DIMENSIONS AND PRINTED BOARD MOUNT CONTACT HOLE PATTERN

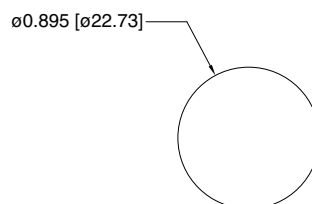
HOLE IDENTIFICATION SHOWN IS FOR MATING FACE OF FEMALE CONNECTOR.
USE MIRROR IMAGE FOR MALE CONNECTOR.



SUGGESTED PRINTED BOARD HOLE SIZES:

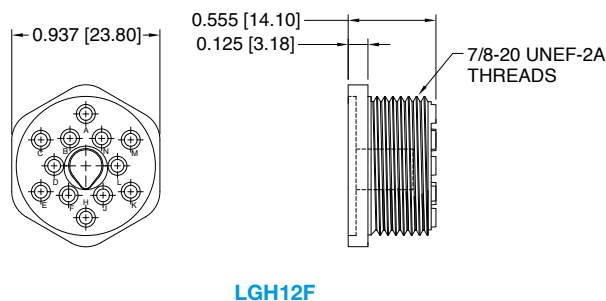
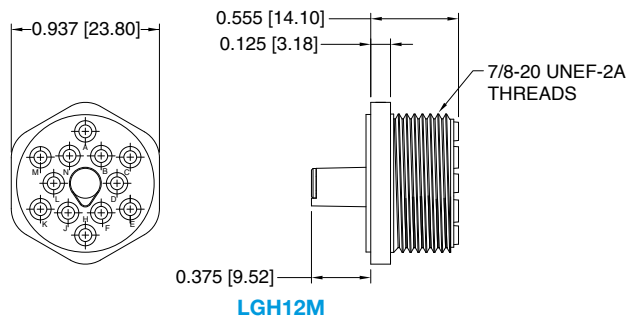
Suggest 0.045 [1.14] Ø holes in printed board for contact terminations.

PANEL CUT-OUT DIMENSIONS



INSULATOR DIMENSIONS

MATING FACE OF FEMALE CONNECTOR FOR SIZE LGH 12.



See LGH Series Printed Board Hole Patterns, page 10 of this catalog, for contact variant hole positions.

ORDERING INFORMATION - CODE NUMBERING SYSTEM

Specify Complete Connector By Selecting An Option From Step 1 Through 6

STEP	1	2	3	4	5	6	7	8
EXAMPLE	LGH	12	M	SC	0	0	/AA	

STEP 1 - BASIC SERIES

LGH Series

STEP 2 - CONNECTOR VARIANTS

12

STEP 3 - CONNECTOR GENDER

M - Male
F - Female - open entry contacts
FC - Female - closed entry contacts

STEP 4 - CONTACT TERMINATION TYPE

SC - Solder Cup.
DS6 - Straight Solder, 0.182 [4.62]

STEP 8 - SPECIAL OPTIONS

**CONTACT TECHNICAL SALES
FOR SPECIAL OPTIONS**

STEP 7 - ENVIRONMENTAL COMPLIANCE OPTIONS

/AA - Compliant per EU Directive
2002/95/EC (RoHS)

NOTE: If compliance to environmental
legislation is not required, this step will
not be used. Example: LGH12MSC00

STEP 6 -

0 - This position is reserved for future use, insert "0".

STEP 5 -

0 - This position is reserved for future use, insert "0".





Positronic
connectpositronic.com

MGH SERIES

PROFESSIONAL QUALITY / FIXED CONTACTS

MICROMINIATURE CIRCLE HEX CONNECTORS

Circle
Hex

**Size 22 Signal/Power
Contacts**

**High Performance
Construction**

**Polarization and
Locking Accessories**

**UL Recognized
File #E49351**



MGH series connectors are microminiature, high reliability connectors. They are available with three contacts for providing polarization: two contacts at 0.030 inch [0.76 mm] diameter, and one contact at 0.040 inch [1.02 mm] diameter. The MGH series is rated to 5 amperes per contact. Spacing between contacts is 0.102 inch [2.59 mm], and the face diameter of the connector is 0.312 inch [7.92 mm].

MGH series connectors are ideally applied where limited space is a concern. MGH series connectors

can be used as cable connectors, panel-mounted connectors, or probes. Constructed of high performance materials, MGH series connectors are widely used in medical, industrial, military, and automotive applications.



**For RoHS options
see page 14.**

TECHNICAL CHARACTERISTICS

MATERIALS AND FINISHES:

Insulator:	Glass-filled DAP per ASTM-D-5948, Type SDG-F. Green color is standard.
Contacts:	Precision machined copper alloy.
Contact Plating:	Gold flash over nickel.
Hoods:	Aluminum with yellow or black anodize.
Lock Rings and Lock Springs:	Copper alloy with zinc plate and chromate seal.

MECHANICAL CHARACTERISTICS:

Fixed Contacts:	Two (2) size 22 contacts, male - 0.030 inch [0.76 mm] diameter, and one (1) size 20 contact, male - 0.040 inch [1.02mm] diameter. Female contact - open entry.
Contact Retention in Insulator:	6 lbs. [26.5 N], minimum.
Contact Termination:	Solder cup - 0.027 inch [0.69mm] hole diameter for 24 AWG [0.25mm ²] wire maximum.
Locking Systems:	Friction, lock spring with lock ring.
Polarization:	0.040 inch [1.02 mm] diameter male contact in position "A".
Mechanical Operations:	250 operations per IEC 60512-5.

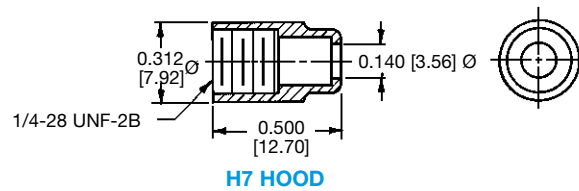
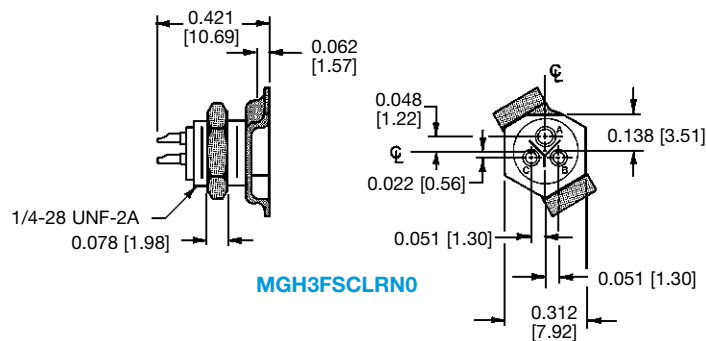
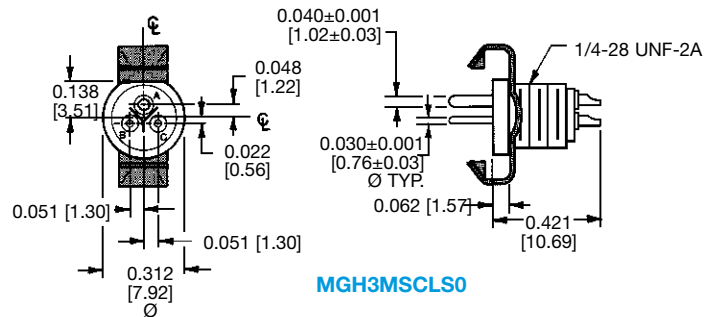
ELECTRICAL CHARACTERISTICS:

Contact Current Rating:	5 amperes.
Initial Contact Resistance:	0.012 ohms, maximum.
Flash over Voltage:	1,500 VAC (rms).
Test Voltage:	1,000 VAC (rms).
Insulation Resistance:	5 G ohms, minimum.
Clearance and Creepage Distance:	0.021 inch [0.53 mm], minimum.
Working Voltage:	600 VAC (rms).

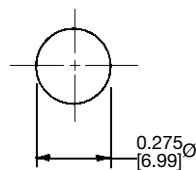
CLIMATIC CHARACTERISTICS:

Temperature Range:	-55°C to +125°C.
Damp Heat, Steady State:	21 days.

TYPICAL ASSEMBLIES



PANEL CUT-OUT DIMENSIONS





Positronic
connectpositronic.com

MGH SERIES

PROFESSIONAL QUALITY / FIXED CONTACTS

MICROMINIATURE CIRCLE HEX CONNECTORS

Circle
Hex

ORDERING INFORMATION - CODE NUMBERING SYSTEM

Specify Complete Connector By Selecting An Option From Step 1 Through 6

STEP	1	2	3	4	5	6	7	8
EXAMPLE	MGH	3	M	SC	LRN	0	/AA	

STEP 1 - BASIC SERIES

MGH Series

STEP 2 - CONNECTOR VARIANTS

3 - Contact Connector Variant

STEP 3 - CONNECTOR GENDER

M - Male
F - Female

STEP 4 - CONTACT TERMINATION TYPE

SC - Solder Cup.

STEP 8 - SPECIAL OPTIONS

**CONTACT TECHNICAL SALES
FOR SPECIAL OPTIONS**

STEP 7 - ENVIRONMENTAL COMPLIANCE OPTIONS

/AA - Compliant per EU Directive
2002/95/EC (RoHS)

NOTE: If compliance to environmental
legislation is not required, this step will
not be used. Example: MGH3MSCLRNO



STEP 5 - MOUNTING AND LOCKING ACCESSORIES

LR - Lock Ring.
LS - Lock Spring.
LRN - Lock Ring and Nut.
0 - If no mounting or locking accessories are required.

STEP 6 - CABLE ADAPTERS (HOODS)

H7 - Aluminum hood, yellow anodize.
H7B - Aluminum hood, black anodize.
0 - If no hoods are required.

Connector Excellence[®]

Positronic HIGH RELIABILITY Products

POWER



FEATURES:

- High current density
- Energy saving - low contact resistance
- AC/DC operation in a single connector
- Signal contacts for hardware management
- Blind mating
- Sequential mating
- Large surface area contact system
- Wide variety of accessories
- Customer-specified contact arrangements
- Modular tooling which produces a single piece connector insert

Contact Sizes: 0, 8, 12, 16, 20, 22 and 24
Current Ratings: To 200 amperes per contact
Terminations: Crimp and panel mount, straight solder, right angle (90°) solder, straight compliant press-in and right angle (90°) compliant press-in
Configurations: Multiple variants in a variety of package sizes
Compliance: PICMG 2.11, PICMG 3.0, VITA 41, DSCC, GSFC S-311-P-4, GSFC S-311-P-10

D - SUB MINIATURE



FEATURES:

- Four performance levels available for best cost/performance ratio: professional, industrial, military and space-flight quality
- Options include high voltage, coax, thermocouple and air coupling contacts; environmentally sealed and dual port connector packages including mixed density
- Broad selection of accessories
- Size 20 and 22 contacts suitable for use in carrying power
- IP65, IP67

Contact Sizes: 8, 16, 20 and 22
Current Ratings: To 100 amperes
Terminations: Crimp, wire solder, straight solder, right angle (90°) solder, straight compliant press-in and right angle (90°) compliant press-in
Configurations: Multiple variants in both standard and high densities, seven shell sizes
Qualifications: MIL-DTL-24308, GSFC S-311-P-4, GSFC S-311-P-10, SAE AS39029, DSCC

RECTANGULAR



FEATURES:

- Two performance levels available: industrial quality and military quality
- A wide variety of accessories
- Broad selection of contact variants and package sizes
- Connector keying options

Contact Sizes: 16, 20 and 22
Current Ratings: To 13 amperes nominal
Terminations: Crimp, wire solder, straight solder, right angle (90°) solder, and straight compliant press-in
Configurations: Multiple variants in both standard and high densities, thirty package sizes
Qualifications: MIL-DTL-28748, SAE AS39029, CCITT V.35

CIRCULAR



FEATURES:

- Non-corrodible / lightweight composite construction
- EMI/RFI shielded versions
- Thermocouple contacts
- Environmentally sealed versions
- Rear insertion/ front release of removable contacts
- Two level sequential mating
- Overmolding available on full assemblies

Contact Sizes: 12, 16, 20 and 22
Current Ratings: To 25 amperes nominal
Terminations: Crimp, wire solder, straight solder, and right angle (90°) solder
Configurations: Multiple variants in four package sizes
Qualifications: Environmental protection to IP67

CABLE



FEATURES:

- Shorten the supply chain and reduce additional costs and delays by "cabling" your Positronic connector selection
- Overmolding available
- Shielded and environmentally sealed versions available
- Power cables and access boxes which meet the SAE J2496 specification

- ✓ Design assemblies in accordance with customer specifications.
- ✓ Prepare cabled connector configuration and performance specifications.
- ✓ Design each system in accordance with applicable customer, domestic, and international standards.
- ✓ Define and conduct performance and verification testing.

HERMETIC



FEATURES:

- Intended for use as an electrical feed-through in high vacuum applications
- Leakage rate: 5 x 10⁻⁹ mbar.l/s @ vacuum 1.5 x 10⁻⁵ atm
- Signal, power, coax and high voltage versions available
- Connectors can be mounted on flange assembly per customer specification

Contact Sizes: 8, 12, 16, 20 and 22
Current Ratings: To 40 amperes nominal
Terminations: Feedthrough is standard; flying leads and board mount available upon request
Configurations: See D-subminiature and circular configurations above
Compliance: Space-D32

For more information, visit www.connectpositronic.com or call your nearest Positronic sales office listed on the back of this catalog.



Positronic®
an Amphenol company

Regional Headquarters

Positronic | Americas

1325 N Eldon Ave
Springfield MO 65803 USA

+1 800 641 4054
info@connectpositronic.com

Positronic | Europe

Z.I. d'Engachies
46, route d'Engachies
F-32020 Auch Cedex 9 France

+33 5 6263 4491
contact@connectpositronic.com

Positronic | Asia

3014A Ubi RD 1 #07-01
Singapore 408703

+65 6842 1419
singapore@connectpositronic.com

Sales Offices

Positronic has local sales representation all over the world. To find the nearest sales office, please visit www.connectpositronic.com/locations

LOCATIONS